

LOWRANCE®



Elite-5x HDI

Operation manual

Copyright © 2013 Navico

All rights reserved.

Lowrance® and Navico® are registered trademarks of Navico.

Navico may find it necessary to change or end our policies, regulations and special offers at any time. We reserve the right to do so without notice. All features and specifications subject to change without notice.

For technical specifications,
certificates and declarations,
refer to the product web site:









www.lowrance.com

Table of contents

Introduction.....	3	Fishing Modes	7
Unit Controls	3	Cursor.....	8
Conventional sonar and DownScan	3	Advanced Mode	8
Basic Operation	4	Restore defaults	9
Setup wizard	4	Pages	10
Pages	4	Sonar Page.....	10
Selecting Pages.....	4	DownScan page	10
Page menus	4	Combo pages	11
Accessing the Settings menu	5	Overlay Data.....	11
Accessing menu items.....	5	DownScan Operation	13
Working with menus	6	DownScan menu	13
Dialogs.....	6	Ping Speed	15
Entering text	6	DownScan options.....	16

Sonar Operation	18	About	28
Sensitivity	19	Alarms	28
Colorline	19	Specifications	30
Range	20	Index	31
Frequency	20		
Ping Speed	21		
Fish ID	22		
DownScan options.....	23		
Sonar Settings	24		
Installation	25		
Settings	27		
Settings menu.....	27		
System.....	27		

Introduction

Unit Controls	
	LIGHT/POWER: controls backlight level and turns unit on/off
	KEYPAD: controls cursor & selects items on menus
	PAGES: allows you to select a page to view
	MENU: opens settings, context and page menus
	ENTER: finalizes menu selections
	ZOOM KEYS: (+) used to zoom in; (-) used to zoom out

Getting Started	
Turn unit on/off	To turn on/off the unit, press and hold the LIGHT/POWER key for three seconds.
Adjusting the backlight	This unit has 11 backlight levels. Press the LIGHT/POWER key to switch backlight levels.
Muting Audio	Select <i>Mute Audio</i> from the System menu and press ENTER .

Conventional sonar and DownScan

This unit supports two types of sonar: Conventional and DownScan.

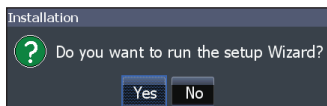
Refer to the “Sonar Operation” section for information about conventional sonar features and settings.

DownScan features and settings are covered in the “DownScan Operation” section.

Basic Operation

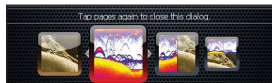
Setup wizard

The Setup wizard will appear when the unit is turned on for the first time. To choose your own settings, do not run the setup wizard. To restart the Setup wizard, restore defaults.

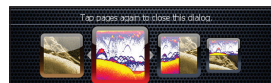


Pages

This unit has four pages: DownScan, Sonar, Sonar/Downscan (vertical) and Sonar/Downscan (horizontal).



Pages dialog

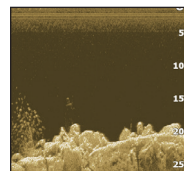


Selecting Pages

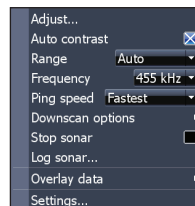
To select a page, press the keypad in the direction of the desired page and press **ENTER**.

Page menus

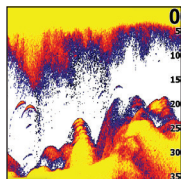
The DownScan and Sonar pages have menus that can only be accessed when those pages are displayed.



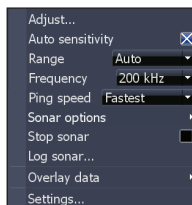
DownScan page



DownScan menu

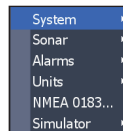
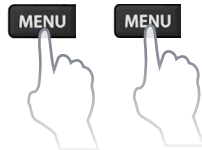


Sonar page

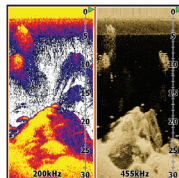


Sonar menu

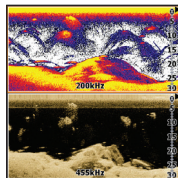
Accessing the Settings menu



Combo pages



Two-panel page

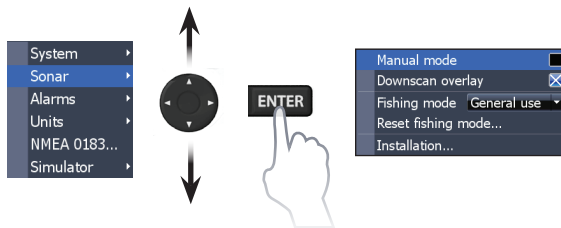


Horizontal panels

Press the **PAGES** key twice to switch active panels. The page menu for the active page will be displayed when the **MENU** key is pressed.

Accessing menu items

The keypad and **ENTER** key are used to select menu items and open submenus. Use the keypad to highlight the desired item and press **ENTER**.



Working with menus

There are several menu types used to make adjustments to options and settings, including scrollbars, on/off features and dropdown menus.

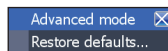
Scrollbars

Select the scrollbar and press the keypad left (decrease) or right (increase).



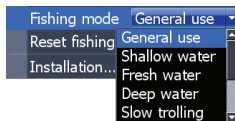
On/Off features

Select an on/off menu item and press **ENTER** to turn it on/off.



Dropdown menus

Access the dropdown menu, press the keypad up/down to select the desired item and press **ENTER**.



NOTE: Press the **MENU** key to exit menus.

Dialogs

Dialogs are used for user input or for presenting information to the user. Depending on the type of entry, different methods are used to confirm, cancel or close the dialog.



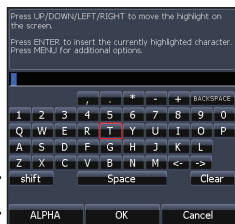
Entering text

To input text:

1. Use the keypad to select the desired character and press **ENTER**.
2. Repeat Step 1 for each character.
3. When entry is completed, highlight **OK** and press **ENTER**.

Switches letters
to uppercase/
lowercase

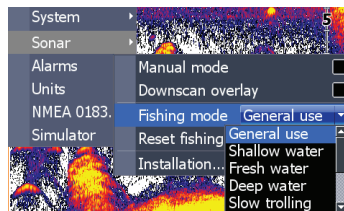
Switches keyboard
between ALPHA and
QWERTY layout



Fishing Modes

(Conventional sonar only)

Fishing modes enhance the performance of your unit by providing preset packages of sonar settings geared to specific fishing conditions.



Fishing Mode Options		
General Use	1000ft or less	Coastal
Shallow Water	60ft or less	Shallow weedy bottoms
Fresh Water	400ft or less	Inland/Near coastal
Deep Water	1000ft or more	Offshore
Slow Trolling	400ft or less	Inland/Coastal
Fast Trolling	400ft or less	Inland/Coastal
Clear Water	400ft or less	Inland/Coastal
Brackish Water	400ft or less	Fresh-Saltwater mix
Ice	400ft or less	Ice fishing

Cursor

The keypad moves the cursor around the display and allows you to review sonar history.

Advanced Mode

Enables advanced features and settings.

The following features are enabled when Advanced mode is turned on:

- NMEA 0183 configuration options
- Units (Enables depth and temperature configuration options)

Standby mode

Lowers power consumption by turning off sonar and the display.

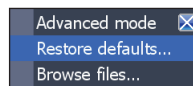
1. Press the **PWR/LIGHT** key to access the Backlight dialog.
2. Select *Standby* and press **ENTER**.
3. Press any key to resume normal operation.



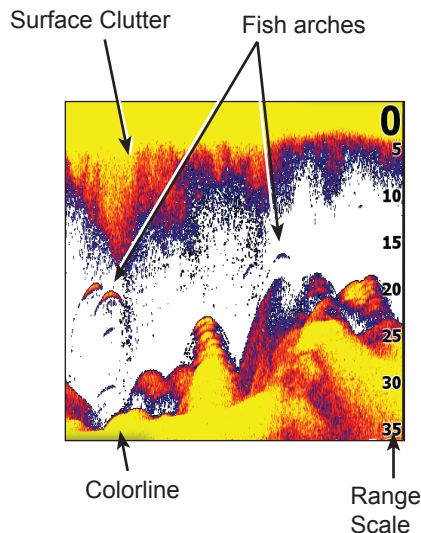
NOTE: Leaving your unit in Standby mode when your boat is not in use will run down your battery.

Restore defaults

Sets unit options and settings to default values.

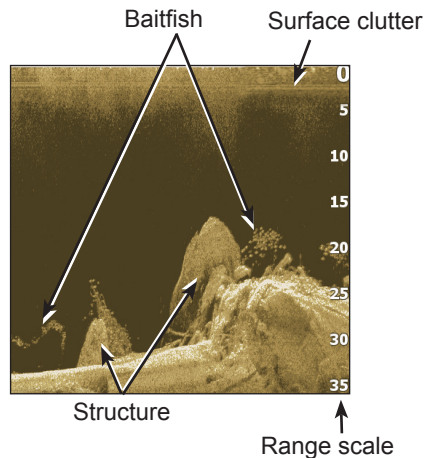


Pages



Sonar Page

Displays the water column moving from right to left on your unit's screen.

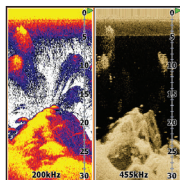


DownScan page

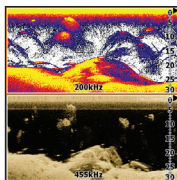
The DownScan page shows the water column moving from right to left. You can overlay DownScan sonar on the conventional sonar page by selecting **DownScan Overlay** on the Sonar settings menu.

Combo pages

This unit has two pre-configured combo pages.



Sonar/DownScan



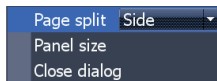
Sonar/DownScan horizontal



NOTE: Press the **PAGES** key twice to switch active panels.

Customizing combo pages

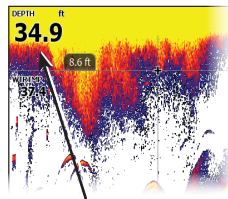
You can adjust the panel size of combo pages and control how the pages will be arranged on the screen: vertically (side) or horizontally (over).



Highlight a combo page on the Page dialog and press **MENU**. Select the desired configuration and press **ENTER**.

Overlay Data

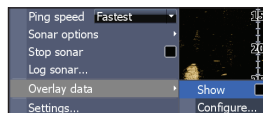
Used to select data shown on the Sonar and DownScan pages.



Overlay data

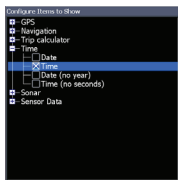
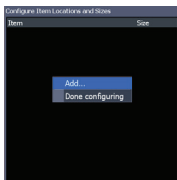
Show

Enables/disables the display of overlay data, allowing you to remove overlay data from the screen without deleting the current overlay data configuration.



Configure

Allows you to select/customize overlay data.



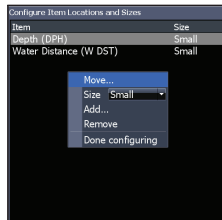
To add overlay data:

1. From the Sonar or DownScan page, press **MENU**.
2. Select *Overlay data* and press **ENTER**.
3. Select *Configure* and press **ENTER**.
4. Press *Menu* and select *Add*. Press **ENTER**.
5. Select a data category and press **ENTER**.
6. Select the desired data and press **ENTER**.
7. Repeat Steps 5 and 6 to add more data.
8. Press **MENU** and select *Return to Overlays*. Press **ENTER**.
9. Press **MENU**, select *Done Configuring* and press **ENTER**.

Customizing Overlay Data

You can select a data source, add/remove data and adjust the size and position of overlay data on the screen.

Select the desired overlay data from the “Configure Item Locations and Sizes dialog” and press **MENU**. The configuration menu will appear.



DownScan Operation

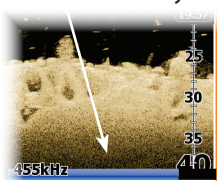
This unit supports two types of sonar: Conventional and DownScan.

The features described in this section are for DownScan sonar. Refer to the “Sonar operation” section for information on conventional sonar features.

Trackback

You can review your sonar history by pressing the keypad to the left until the screen starts to move in reverse and the sonar history bar appears at the bottom of the screen.

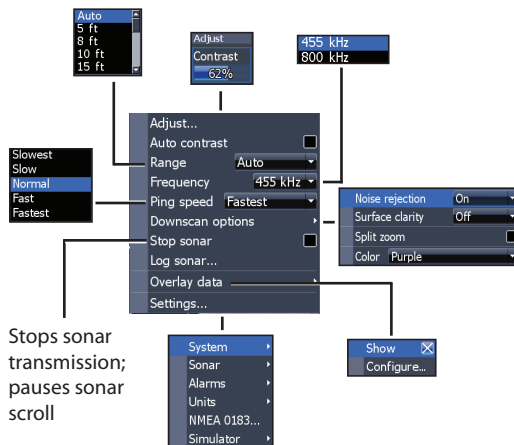
DownScan history bar



Move the sonar history bar all the way to the right to resume normal sonar scrolling, or press **MENU** and select *Exit cursor mode*.

DownScan menu

Press **MENU** from the DownScan page to view the DownScan menu.



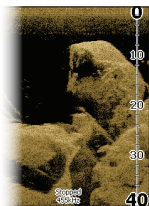
Adjust

Access the Adjust menu to make adjustments to the contrast level.

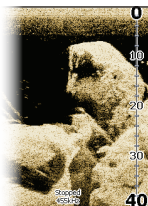


Contrast

Adjusts the brightness ratio between light and dark areas on the screen, making it easier to distinguish suspended objects from the background.



**Contrast set
to 40%**



**Contrast set
to 60%**



**Contrast set
to 80%**

DownScan units do not have a Sensitivity setting like traditional sonar units. Contrast functions as the sensitivity setting for DownScan units.

Auto Contrast

Automatically adjusts contrast settings to a level that works best with current water conditions.



NOTE: You can make limited adjustments to the contrast level with Auto Contrast turned on. You will have to turn it off to have access to all contrast levels.

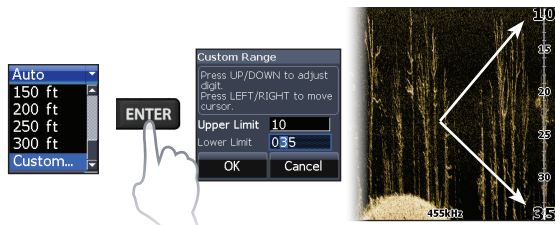
Range

Range settings display the section of the water column from the water surface to the selected depth range.



Custom Range — Upper and Lower Limits

Used to select the upper limit and lower limit of a section of the water column. That allows you to view a section of the water column that does not include the water surface.



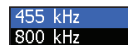
Upper and lower limits must be at least 5 ft (2m) apart.



NOTE: *When using a custom range, you may not receive any digital depth readings, or you may receive incorrect depth information.*

Frequency

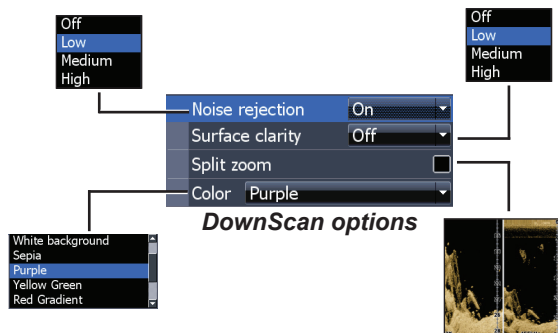
Controls the transducer frequency. 800 kHz offers the best resolution, while 455 kHz has greater depth coverage.



Ping Speed

Controls the rate the transducer uses to send sonar waves into the water. Ping speed adjustments can help reduce interference from other transducers.

DownScan options

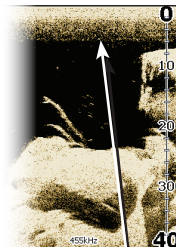


Noise Rejection

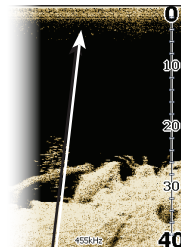
Uses advanced signal processing to monitor the effects noise (boat pumps, water conditions, engine ignition systems, etc.) has on your display, and then filters out undesired signals.

Surface Clarity

Surface Clarity reduces surface clutter by decreasing the sensitivity of the receiver near the surface.



**Surface Clarity
set to Low**



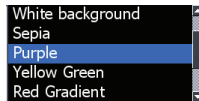
**Surface Clarity
set to High**

Split Zoom

Changes the display to a split zoom view. You can select a 2X or 4X zoom level. Press the +/- keys to zoom in/zoom out.

Color

Allows you to select a color palette best suited to your fishing conditions.



The white background palette works well for suspended targets. Purple is useful for viewing structure detail and determining bottom hardness. Sepia is best for looking at bottom detail.

Stop Sonar

Stops sonar transmission and pauses the sonar chart, allowing you to get a better look at suspended targets and structure.

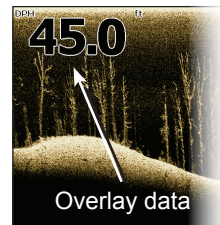


NOTE: *Sonar history (Trackback) will not be recorded when sonar is stopped.*

Overlay Data

Allows you to select data to be displayed on top of the DownScan page.

Overlay data setup is covered in the “Pages” section.

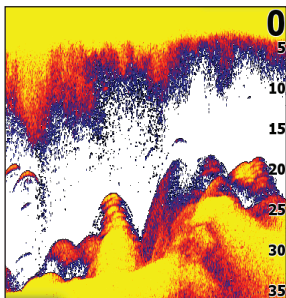


Settings

Accesses the Settings menu. Refer to “Sonar Settings” on page 24.

Sonar Operation

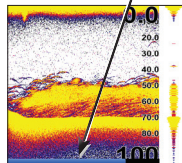
This unit supports two types of sonar: Conventional and DownScan.



The features described in this section are for conventional sonar.

Refer to the “DownScan operation” section for information on DownScan features.

Blue sonar history bar



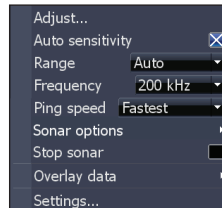
Trackback

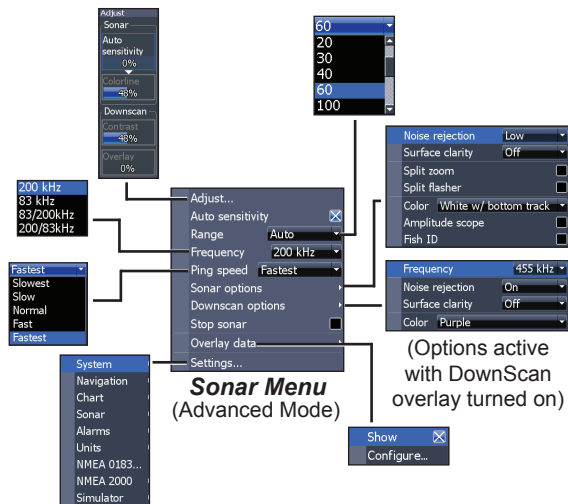
You can review your recent sonar history by moving the cursor to the left until the screen starts to move in reverse.

Move the sonar history bar all the way to the right to resume normal sonar scrolling, or press **MENU** and select *Exit cursor mode*.

Sonar Menu

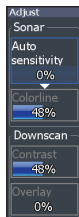
Press **MENU** from any sonar page to access the Sonar menu.





Adjust

You can make adjustments to Sensitivity and Colorline from the Adjust menu. Contrast and Overlay options will only be active on the Adjust menu with DownScan Overlay enabled.



Sensitivity

Controls the level of detail shown on the display. Too much detail will clutter the screen. If Sensitivity is set too low, desired echoes may not be displayed.

Colorline

Separates strong sonar echoes from weak sonar echoes. That makes it easier for you to distinguish fish or structure from the bottom. A hard return will be shown as a wide, bright yellow area, whereas a soft return will be a narrow reddish-blue area.

Auto Sensitivity

Keeps sensitivity at a level that works well under most conditions, reducing the need for adjustments. Auto Sensitivity is turned on by default.



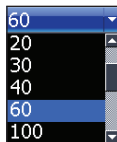
NOTE: You can make changes (+/-40%) to sensitivity with Auto Sensitivity turned on. You will have to turn it off to make significant adjustments.



Custom range menu

Range

Selects the deepest range shown on the display. Range settings display the section of the water column from the water surface to the selected depth range.



If you select too shallow a depth range, the unit will not be able to lock onto the bottom.

Custom Range — Upper and Lower Limits

Used to select the upper limit and lower limit of a section of the water column. That allows you to view a section of the water column that does not include the water surface. Upper and lower limits must be at least 5 ft (2m) apart.



NOTE: When using a custom range, you may not receive any digital depth readings, or you may receive incorrect depth information.

Frequency

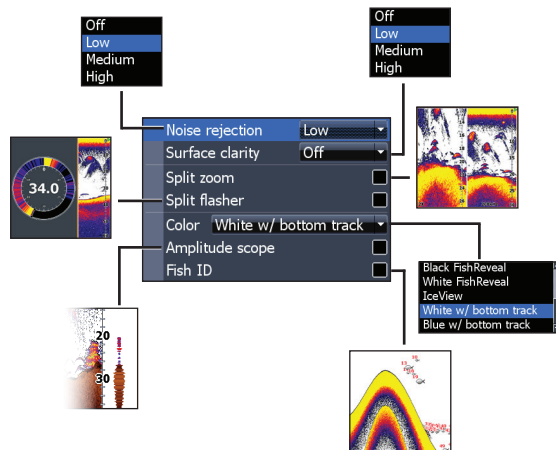
Controls the transducer frequency used by the unit. This unit supports three conventional sonar frequencies: 50kHz, 83kHz and 200kHz.

200 kHz has the highest sensitivity and best target separation in shallow water. 83 kHz offers a wider cone angle for more water coverage. 50 kHz provides the best depth penetration.

Ping Speed

Controls the rate the transducer uses to send sonar waves into the water. Ping speed adjustments can help reduce interference from other transducers. When using fishing modes, ping speed settings are optimized for the selected fishing conditions, so in most cases, adjustments are not necessary.

Sonar Options

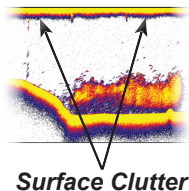


Noise Rejection

Uses advanced signal processing to monitor the effects noise (boat pumps, water conditions, engine ignition systems, etc.) has on your display, and then filters out undesired signals.

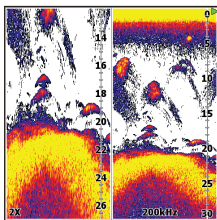
Surface Clarity

Surface Clarity reduces surface clutter by decreasing the sensitivity of the receiver near the surface.

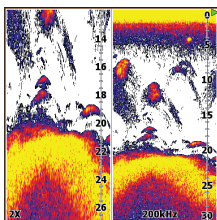


Split Zoom and Split Flasher

Switches the sonar display from full screen sonar to a split screen view.



Split Zoom



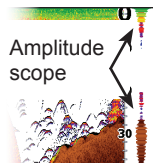
Split Flasher

Color

Allows you to change the look of the display using palettes with varying degrees of color/brightness.

Amplitude Scope

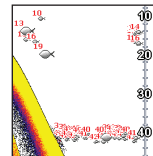
Displays the amplitude of the most recent echo.



Fish ID

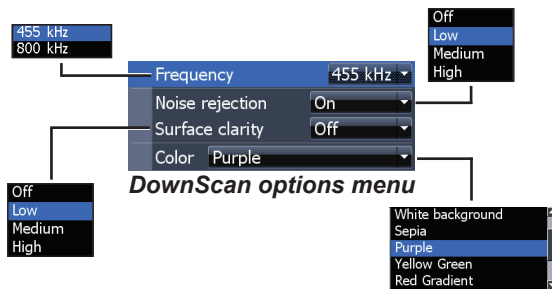
Displays fish echoes as fish symbols instead of fish arches.

Fish ID is not the most accurate method of fish detection since structure and suspended debris may be shown as a fish symbol on the display.



DownScan options

You can make adjustments to DownScan overlay settings from the sonar page. DownScan options are covered in more detail in the “DownScan Operation” section.



NOTE: The DownScan options menu will only be available when DownScan overlay is enabled.

Stop Sonar

Pauses the unit's sonar, allowing you to get a closer look at suspended targets.

Stop Sonar also can be used to prevent/stop interference between two sonar units running on the boat at the same time.

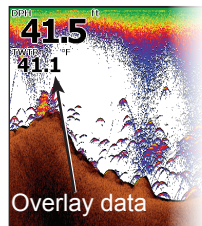


NOTE: Sonar history will not be recorded when sonar is stopped.

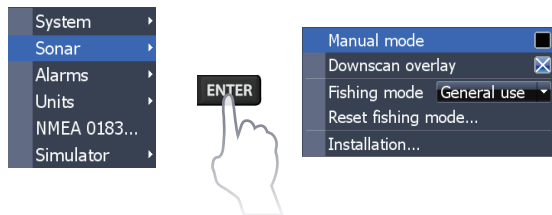
Overlay Data

Allows you to select data to be displayed on top of the Sonar page.

Overlay data setup is covered in the “Pages” section.



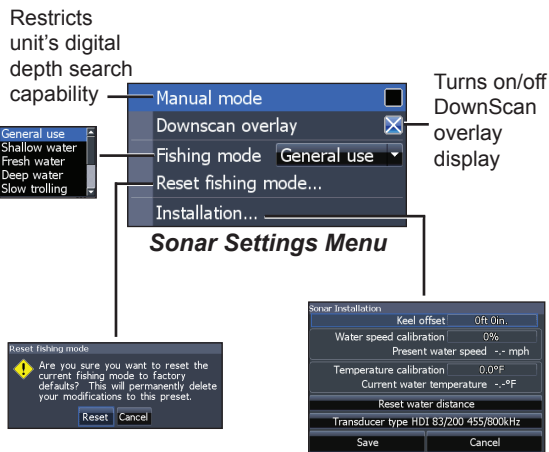
Sonar Settings



Conventional settings/DownScan Settings

You can adjust settings for both Conventional sonar and DownScan sonar modes from the Sonar Settings menu.

Only adjustments made to conventional sonar settings will be visible on the sonar page.



Manual Mode

Restricts digital depth capability, so the unit will only send sonar signals to the selected depth range. That allows the display to continue smooth scrolling if the bottom depth is out of transducer range.

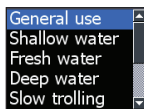


WARNING: Manual mode should only be used by advanced sonar users.

When the unit is in manual mode, you may not receive any depth readings, or you may receive incorrect depth information.

Fishing Mode

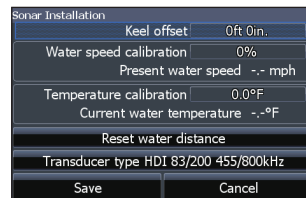
Enhances the performance of your unit by providing preset packages of sonar settings geared to specific fishing conditions. For more information about fishing modes, refer to the “Basic Operation” section.



Reset Fishing Mode

Resets selected fishing mode to default settings. That is useful when you want to clear settings adjustments made while using a fishing mode.

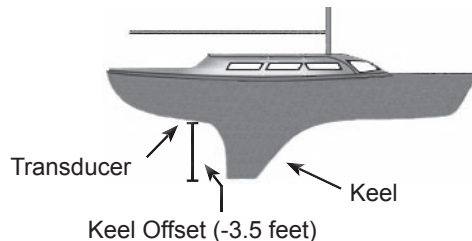
Installation



Installation menu

Keel Offset

All transducers measure water depth from the transducer to the bottom. As a result, water depth readings do not account for the distance from the transducer to the keel or from the transducer to the water surface. Before setting keel offset, measure



the distance from the transducer to the lowest part of the keel. If, for example, the keel is 3.5 feet below the transducer, it will be input as -3.5 feet.

Water speed calibration

Calibrates a paddlewheel speed sensor with speed data from a GPS source.

Temperature calibration

Calibrates data from the transducer temperature sensor with data from a known temperature source to ensure the accuracy of temperature information.

Reset water distance

Resets Water Distance to zero.

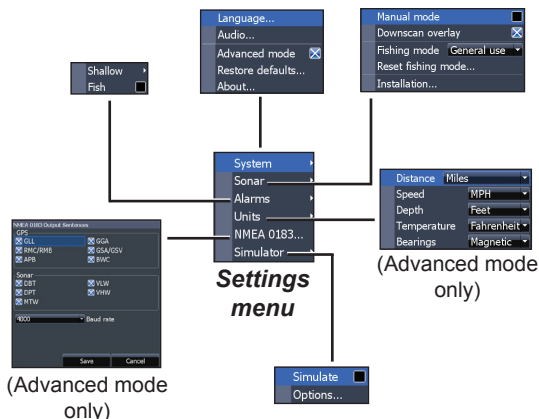
Transducer Type

Selects the transducer model attached to your unit. You must select the correct transducer type to get the best sonar performance from your unit.

Settings

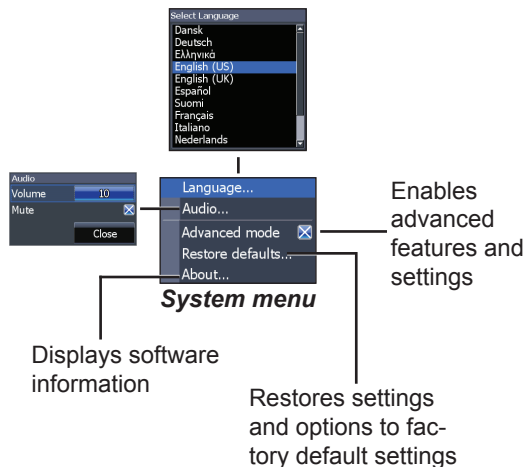
Settings menu

Accesses installation and configuration settings for your unit.



System

Adjusts unit settings like language, mute audio and advanced mode.



Set Language

Selects the language used on menus and text boxes.



check the version of software your unit is using by accessing the About screen.

Lowrance periodically updates unit software to add features and improve functionality. To see the latest available software version go to www.lowrance.com.

Audio

Adjusts volume and turns on/off unit audio, like key beeps, alarm sounds, etc.

Advanced Mode

Enables features and settings only available with unit in Advanced Mode.

Restore Defaults

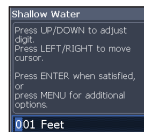
Switches the unit back to default settings.

About

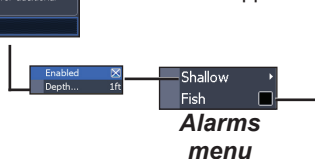
Displays software information about this unit. Before attempting a software update, you can

Alarms

Enables alarms and selects alarm thresholds.



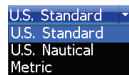
Sounds alarm when Fish ID symbol appears on display



Alarms	
Shallow	sounds alarm when vessel enters water shallower than the selected shallow threshold
Fish	sounds alarm when a fish symbol (Fish ID) appears on the sonar screen

Units

Allows you to select the unit of measure used by the unit. Unit options vary depending on whether the unit is in basic or advanced mode.



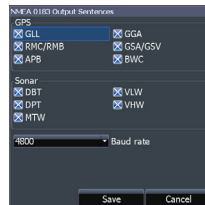
Basic Mode



Advanced Mode

NMEA 0183 Output

You can select the NMEA 0183 sentences the unit will use when connected to a VHF radio or other NMEA 0183 device.



You can also adjust the Baud rate, but the default setting works best under most conditions.

Simulator

Simulates sonar activity. Simulations can be customized on the Simulator options menu.

Elite-5x HDI	
General	
Case Size	5.4" H (136 mm) x 6.9" W (174 mm); 5.9" H (151 mm) with bracket
Display	(5" diagonal) 16-bit color Full color VGA Solar MAX™ Plus TFT
Waterproof standard	IPX7
Backlight	LED (11 levels)
Communications	NMEA 0183 Output
Declaration of Conformity	Part 15.103 FCC rules & CE RTTE directive 1999/5/EC
Power	
Transmit Power	250W RMS; 30,000 PTP
Power Requirement	12V
Voltage Input	10 to 17V
Current drain	Typical: 1.1A
Fuse type	3-amp Automotive

Sonar	
Max depth	300ft (91 m) 455/800Khz 1000ft (305 m) 83/200kHz 2500ft (762 m) 50/200kHz
Transducer Frequency	455/800kHz and 83/200kHz or 50/200kHz
Max speed	70mph
Transducer	HDI 50/200kHz HDI 83/200kHz 83/200kHz
Transducer cable	20ft (6m)

Index

- A**
 - About 28
 - Adding overlay data 12
 - Adjusting the backlight 3
 - Adjust menu 19
 - Advanced Mode 8, 28
 - Alarms 28
 - Amplitude Scope 22
 - Audio 28
 - Auto Contrast 14
 - Auto Sensitivity 19
- B**
 - Basic Operation 4
- C**
 - Color 17, 22
 - Colorline 19
 - Combo pages 5
 - Contrast 14
 - Conventional sonar & Downscan 3
 - Cursor 8
 - Customizing combo pages 11
 - Custom Range 15, 20
- D**
 - Depth range 20
 - Depth Range 14
 - Dialogs 6
 - Downscan options 23
 - Downscan page 10
 - Dropdown menus 6
 - DownScan menu 13
- E**
 - Entering text 6
- F**
 - Fish alarm 29
 - Fish ID 22
 - Fishing Mode 7
 - Fishing Modes
 - Reset 25
 - Frequency 15, 20
- I**
 - Ice Mode 23
- K**
 - Installation menu 25
- L**
 - Keel Offset 25
- L**
 - Language 28
- M**
 - Manual Mode 24
 - Muting Audio 3
- N**
 - NMEA 0183 29
 - Noise Rejection 16, 21

- O**
 - On/Off features 6
 - Overlay Data 11, 17, 23
 - Configure 11
 - Customizing 12
 - Show 11
- P**
 - Page menus 4
 - Page selection 4
 - Ping Speed 15, 21
- R**
 - Range 14
 - Reset Fishing Mode 25
 - Reset water distance 26
- S**
 - Restore Defaults 28
 - Saving Screenshots 28
 - Scrollbars 6
 - Sensitivity 19
 - Set Language 28
 - Settings 27
 - Settings menu 27
 - Setup wizard 4
 - Shallow alarm 29
 - Simulator 29
 - Software Updates 28
 - Sonar Installation 25
 - Sonar Menu 18
 - Sonar Options 21
 - Sonar Page 10
 - Sonar settings 24
 - Split Flasher 22
- T**
 - Split Zoom 21
 - Standby mode 9
 - Stop Sonar 17, 23
 - Surface Clarity 16, 22
 - System menu 27
 - System settings 27
- U**
 - Unit Controls 3
 - Units 29
 - Upper and Lower Limits 15, 20
- W**
 - Working with menus 6

Contact information

Customer Service:

1-800-628-4487

(8 a.m. to 5 p.m. Central Standard Time, M-F)

(Canada)

1-855-361-1564

canada@navico.com

(8 a.m. to 5 p.m. Eastern Standard Time, M-F)

Ordering Accessories

<http://store.navico.com/>

Visit our website

www.lowrance.com

Visit our website:

www.lowrance.com

