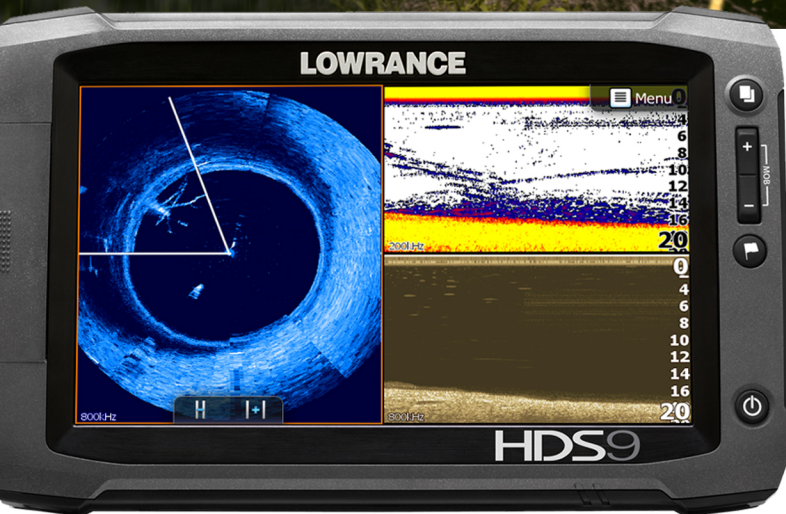
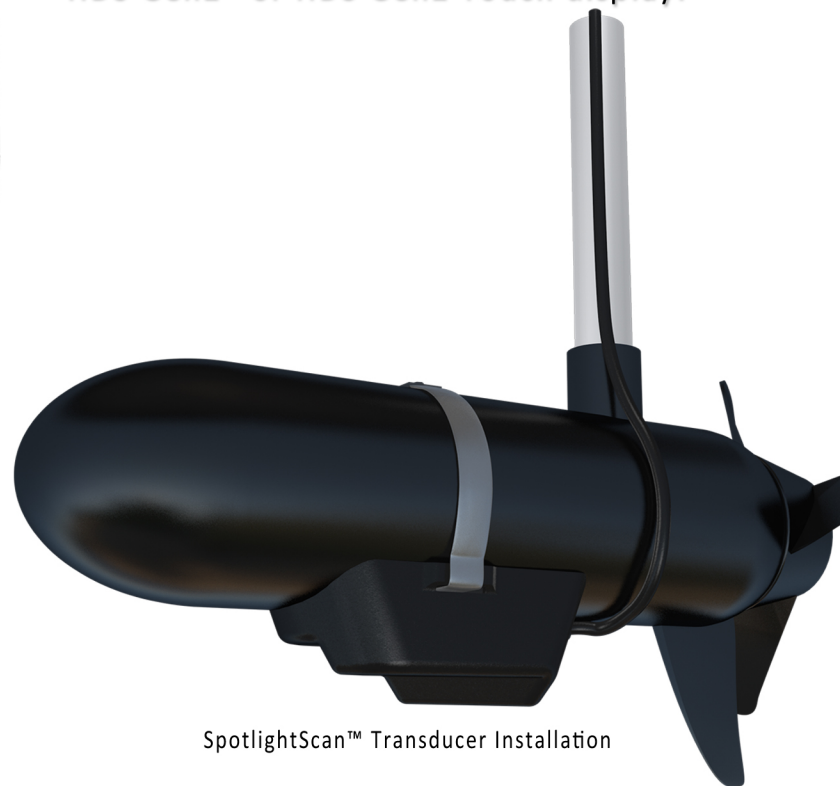


LOWRANCE

SpotlightScan™ Sonar



Introducing a new level of angler-controlled, surround-scanning views for picture-like images of key fishing areas on your HDS Gen2* or HDS Gen2 Touch display.



SpotlightScan™ Transducer Installation

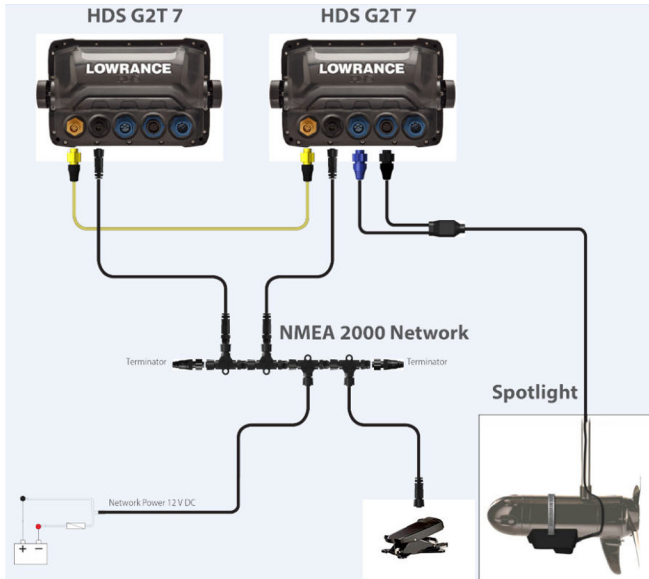
SpotlightScan™ Sonar Features

- Focusing on the areas you want to fish, without wasting valuable fishing time, while waiting for a full 360-degree scan.
- SpotlightScan™ Sonar features a scanning range of 150 feet, and operates at optional frequency ranges of 455 or 800 kHz.
- The SpotlightScan transducer also provides DownScan Imaging™ for picture-like images of fish and structure beneath your boat as well as award-winning Broadband Sounder® technology, which is ideal for marking fish arches and tracking lure action.
- The SpotlightScan™ transducer can be installed on any bow-mounted, cable-steer, foot-control trolling motor (not electric steer) using a stainless-metal hose clamp (included), so there's no need for special mounting kits. To complete the installation, a SpotlightScan NMEA 2000® sensor is connected to the trolling motor's foot control.
- With this installation, the angler has complete control – simply by using the foot pedal – of the SpotlightScan™ sonar direction and scanning speed – all without having to make additional menu adjustments on the HDS Gen2 display.
- Supported by Lowrance Advantage Service program
- NMEA 2000® Starter Kit (part number 000-0124-69) required for installation.

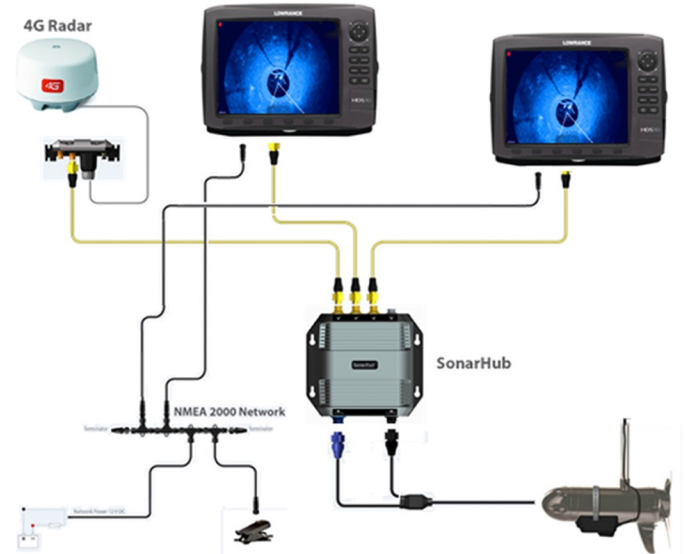
* HDS Gen2 (non Touch) models require SonarHub™ Sounder Module for SpotlightScan™ Sonar operation.



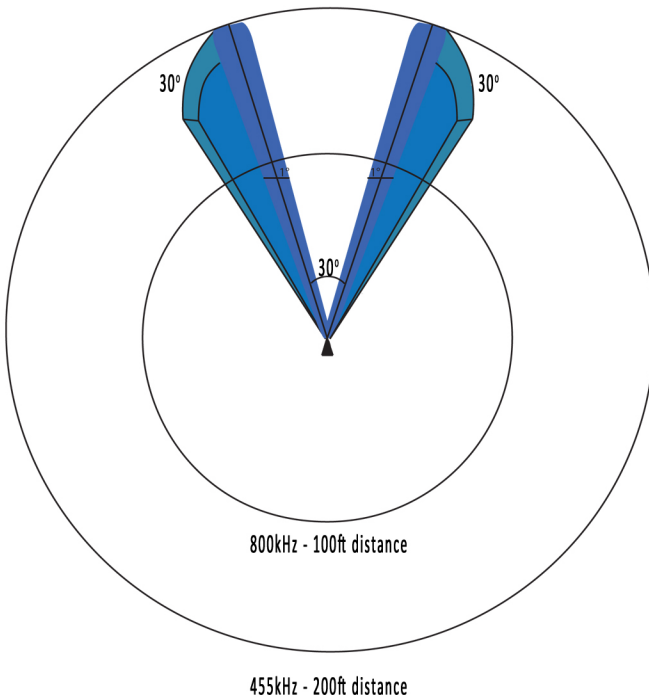
Similar to the way a scanning spotlight reveals objects in the dark, SpotlightScan™ Sonar clearly pinpoints structure and fish targets ahead and around your boat, so you save valuable time on the water and maintain focus on the most productive fishing spots ... all without disturbing these areas before you have a chance to fish them.



SpotlightScan™ Sonar installation with HDS Gen2 Touch



SpotlightScan™ Sonar installation with HDS Gen2 (SonarHub™ Sounder Module required).



Maximum SpotlightScan™ Sonar range: 100 ft with 800 kHz, 200 ft with 455 kHz
 SpotlightScan™ Sonar signal width: 1 degree with 800 kHz, 1.5 degree with 455 kHz
 SpotlightScan™ Sonar signal height: 30 degrees with 800 kHz, 45 degrees with 455 kHz

Part No.	Barcode	Description	MAP
000-11303-001	9420024128442	SpotlightScan™ Trolling Motor Transducer	\$499
000-11304-001	9420024128459	SpotlightScan™ Trolling Motor Transducer With SonarHub™ Sounder Module	\$999

For More Information, visit:
www.lowrance.com

