


# LOWRANCE®



## Elite 5 DSI, Elite 4 DSI & Mark 4 DSI Operation manual



**Copyright © 2011 Navico  
All rights reserved.**

Lowrance® and Navico® are registered trademarks of Navico.

Fishing Hot Spots® is a registered trademark of Fishing Hot Spots Inc.

Navionics® is a registered trademark of Navionics, Inc.



**Navico may find it necessary to change or end our policies, regulations and special offers at any time. We reserve the right to do so without notice. All features and specifications subject to change without notice.**



**Visit our website:  
[www.lowrance.com](http://www.lowrance.com)**








# Table of Contents

<b>Introduction.....</b>	<b>3</b>	<b>Pages .....</b>	<b>11</b>
Unit Controls.....	3	Steer Page.....	11
Inserting microSD cards .....	4	DSI Page .....	11
<b>Basic Operation .....</b>	<b>5</b>	Chart/DSI page.....	12
Setup wizard.....	5	Chart Page .....	12
Selecting Pages.....	5	Chart/Sonar split.....	13
Accessing menu items.....	7	Overlay Data.....	13
Working with menus .....	7	<b>Using DSI.....</b>	<b>15</b>
Cursor.....	9	Trackback .....	15
Goto cursor.....	9	DSI menu.....	15
Advanced Mode .....	9	<b>DSI Interpretation .....</b>	<b>19</b>
Standby mode .....	9	<b>Using your Chart .....</b>	<b>21</b>
Restore defaults .....	10	Chart Menu.....	21
Adjusting the display.....	10	Waypoints, Routes, Trails.....	22

# Table of Contents

Routes Screen.....	23	<b>Index .....</b>	<b>39</b>
Trails Screen .....	27	<b>Specifications .....</b>	<b>41</b>
Orientation.....	29		
Settings Menu.....	30		
System.....	30		
<b>Settings .....</b>	<b>30</b>		
Browse Files.....	32		
Saving Screenshots.....	32		
Navigation.....	33		
Chart.....	34		
Sonar .....	35		
Installation .....	36		
Alarms .....	37		



Unit Controls	
	<b>LIGHT/POWER:</b> controls backlight level and turns unit on/off
	<b>KEYPAD:</b> controls cursor & selects items on menus
	<b>PAGES:</b> allows you to select a page to view
	<b>MENU:</b> opens settings, context and page menus
	<b>ENTER:</b> finalizes menu selections; save waypoint at cursor position
	<b>ZOOM Keys:</b> used to zoom in/zoom out
	<b>MOB:</b> press and hold both Zoom keys to create a Man Overboard waypoint
<b>microSD slot:</b> insert a blank microSD card to save screen captures; or insert a microSD mapping card to use mapping data (See illustration on page 2)	

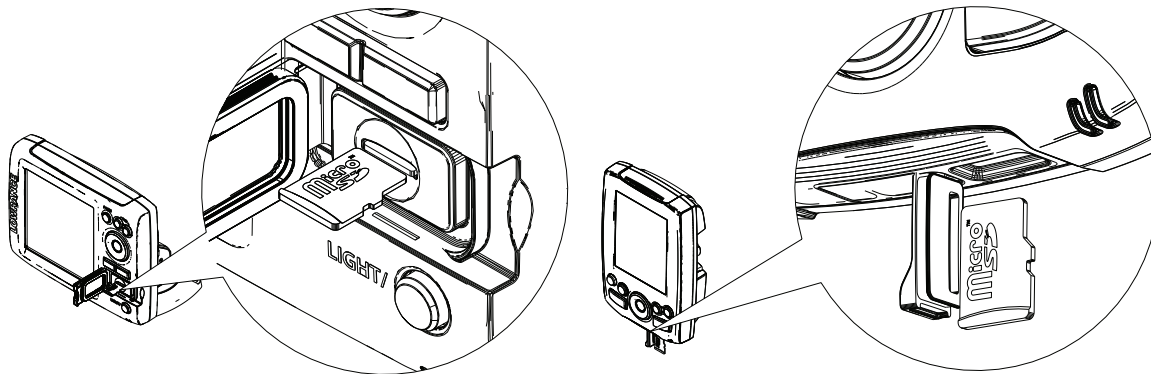
Getting Started	
<b>Turn unit on/off</b>	To turn on/off the unit, press and hold the <b>LIGHT/POWER</b> key for three seconds.
<b>Man Overboard waypoint</b>	Press the <b>ZOOM IN</b> and <b>ZOOM OUT</b> keys at the same time to set a Man Overboard waypoint. Your system will automatically create an active route back to the MOB waypoint. You must cancel navigation to terminate the function.
<b>Adjusting the backlight</b>	This unit has 10 backlight levels. Press the <b>LIGHT/POWER</b> key to switch backlight levels.
<b>Muting Audio</b>	Select <b>Mute Audio</b> from the System menu and press <b>ENTER</b> .
<b>Selecting a GPS Source</b>	Select <b>GPS Source</b> from the System menu and press <b>ENTER</b> . Select <i>internal</i> or <i>external</i> and press <b>ENTER</b> . ( <b>Elite-5 DSI only</b> )

# Introduction

## Inserting/Removing microSD cards

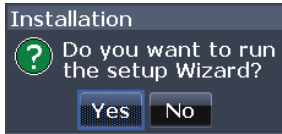
Carefully slide the microSD card into the slot until it clicks into place.

To remove, carefully push in the card until it clicks out of place.



## Setup wizard

The Setup wizard will appear when the unit is turned on for the first time. To choose your own settings, do not run the setup wizard.



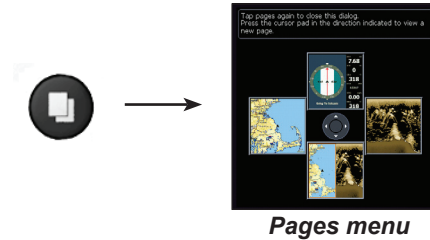
To restart the Setup wizard, restore defaults.

## NOTICE

This manual covers several units. Some screenshots may differ from what you see on your screen. Your unit, however, will function in a similar manner.

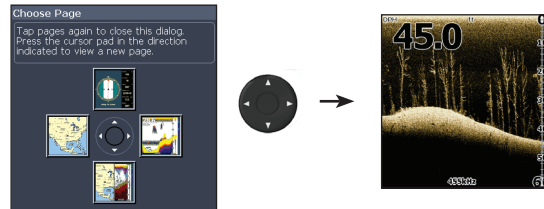
## Pages

This unit has four pages: Steer, Chart, Chart/DSI and DSI.

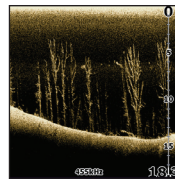
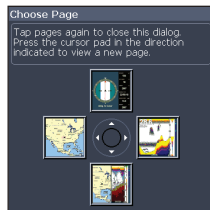


## Selecting Pages

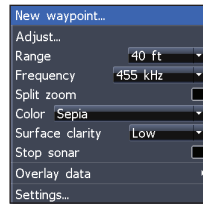
To select a page, press the keypad in the direction of the desired page.



# Basic Operation



DSI Page



DSI menu

## Page menus

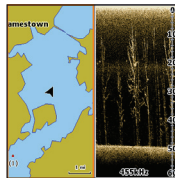
The Steer, DSI, Chart, and Chart/DSI pages have menus that can only be accessed when those pages are displayed.



Steer page



Steer menu



Chart/DSI page



Chart or DSI menu will appear depending on which panel is active. Press the **PAGES** key twice to switch active panels.



Chart page

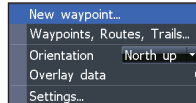
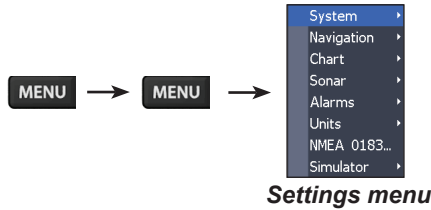


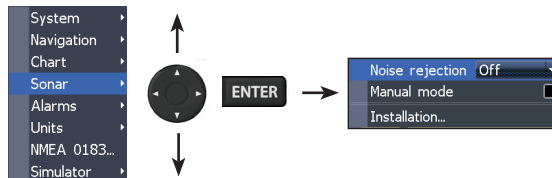
Chart menu

## Accessing the Settings menu



## Accessing menu items

The keypad and **ENTER** key are used to select menu items and open submenus. Use the keypad to highlight the desired item and press **ENTER**.



## Working with menus

There are several menu types used to make adjustments to options and settings, including scrollbars, on/off features and dropdown menus.

### Scrollbars

Select the scrollbar and press the keypad left (decrease) or right (increase).



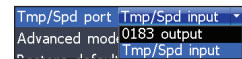
### On/Off features

Select an on/off menu item and press **ENTER** to turn it on/off.



### Dropdown menus

After accessing the dropdown menu, press the keypad up/down to select the desired item and press **ENTER**.



# Basic Operation



**NOTE:** Press the Menu key to Exit menus.

## Dialogs

Dialogs are used for user input or for presenting information to the user.

Depending on the type of information or entry, different methods are used to confirm, cancel or close the dialog.

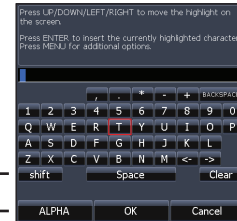


## Entering text

Some functions, like naming a waypoint, route or trail, will require you to input text.

Switches letters to uppercase/lowercase

Switches keyboard between Alpha and QWERTY layout



## To input text:

1. Use the keypad to select the desired character and press **ENTER**.
2. Repeat Step 1 for each character.
3. When entry is completed, highlight **OK** and press **ENTER**.

## Basic Operation

### Cursor

The keypad moves the cursor around the display, allowing you to scroll the map, select map items and review sonar history. Press **MENU** and select *Return to vessel* or *Exit cursor mode* to clear the cursor.

### Goto cursor

Allows you to navigate to the cursor.

1. Move the cursor to a desired location and press **MENU**.
2. Select *Goto cursor* and press **ENTER**.

### Advanced Mode

Enables advanced features and settings.

The following features are enabled when Advanced mode is turned on:

- Alarms (Enables arrival, off course and anchor alarm options)
- NMEA 0183 Output
- Units (Enables distance, speed, depth, temperature, and bearings options)

### Standby mode

Lowers power consumption by turning off sonar and the display.

1. Press the **PWR/LIGHT** key to access the Back-light dialog.
2. Select *Standby* and press **ENTER**.
3. Press any key to resume normal operation.



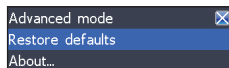
## Basic Operation



**NOTE:** Leaving your unit in Standby mode when your boat is not in use will run down your battery.

### Restore defaults

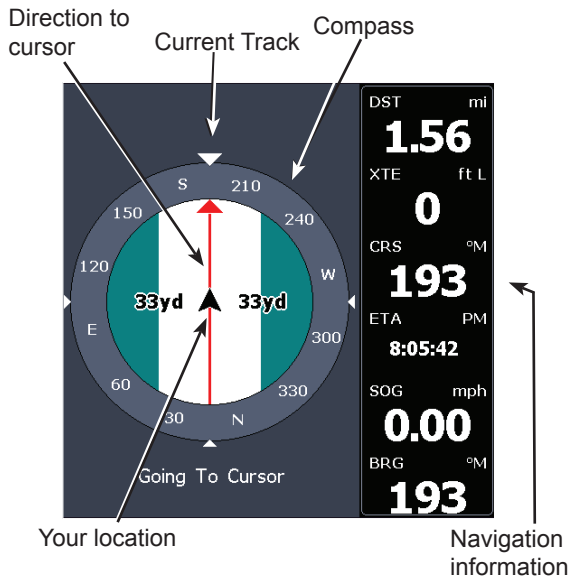
Resets unit options and settings to defaults.



### Adjusting the display

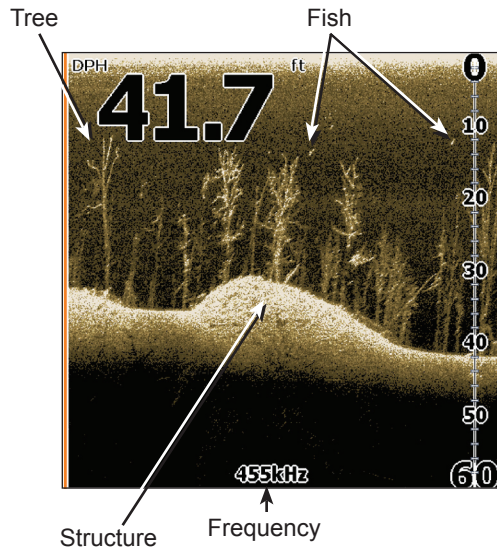
You can make adjustments to the display using Contrast and Color settings. Both are covered in the DSI section.





### Steer Page

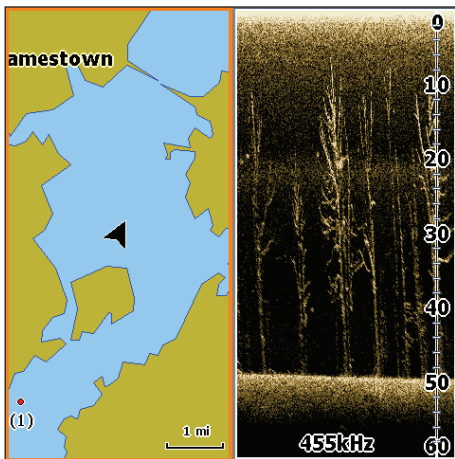
The Steer page has a compass that shows your current track, the direction to your destination, and a digital data navigation panel.



### DSI Page

Displays the water column moving from right to left on your unit's screen.

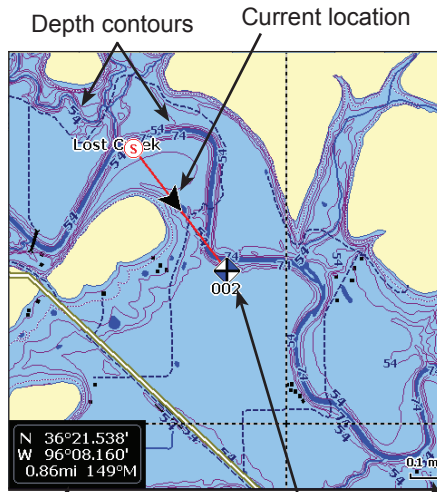
# Pages



Chart/DSI Page

## Chart/DSI page

Consists of a Chart/DSI splitscreen. Press the Pages key twice to switch active panels. The active panel will have an orange border.



Current location;  
distance to cursor

Waypoint

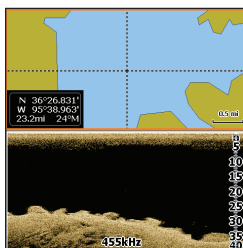
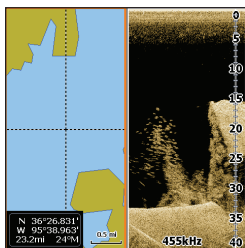
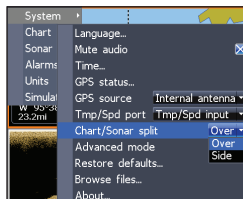
Zoom  
Range

## Chart Page

Consists of map that moves in real-time as you move. By default, the map is shown from a birds-eye view with North at the top of the screen.

## Chart/Sonar split

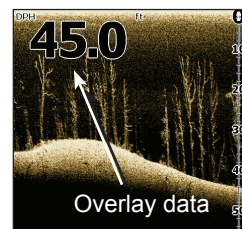
Allows you to change the way the panels are displayed when viewing the Chart/Sonar page.



Press the Pages key twice to switch active panels.

## Overlay Data

Displays selected overlay data on the sonar page.



### Show

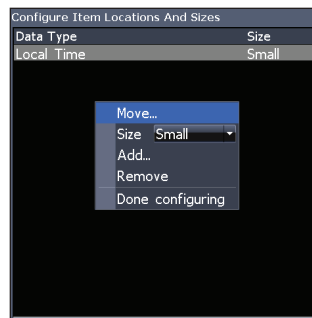
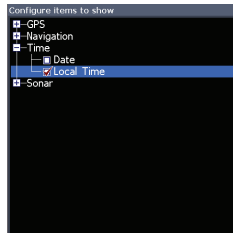
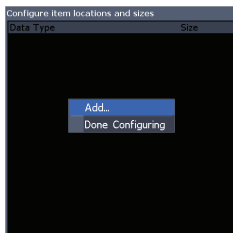
Enables/disables the display of overlay data, allowing you to remove overlay data from the screen without deleting the selected overlay data configuration.



### Configure

Used to select overlay data to be displayed on the screen.

# Pages



## To select overlay data:

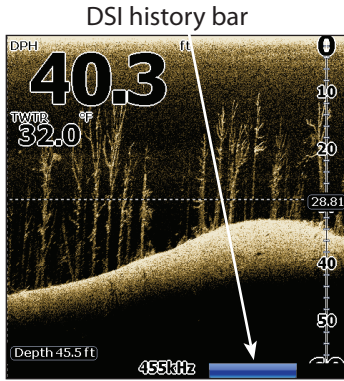
1. From the DSI or chart page, press **MENU**.
2. Select *Overlay data* and press **ENTER**.
3. Select *Configure* and press **ENTER**.
4. Press *Menu* and select *Add*. Press **ENTER**.
5. Select a category from the Configure Items to show screen. Press **ENTER**.
6. Press **MENU** and select *Return to overlay*.
7. Press **MENU**, select *Done Configuring* and press **ENTER**.

## Customizing Overlay Data

Access the Overlay Data configuration menu to make adjustments to the size and/or location of overlay data on the display.

Press Menu from the Configure Item Locations and Sizes screen to access the menu.

# Using DSI



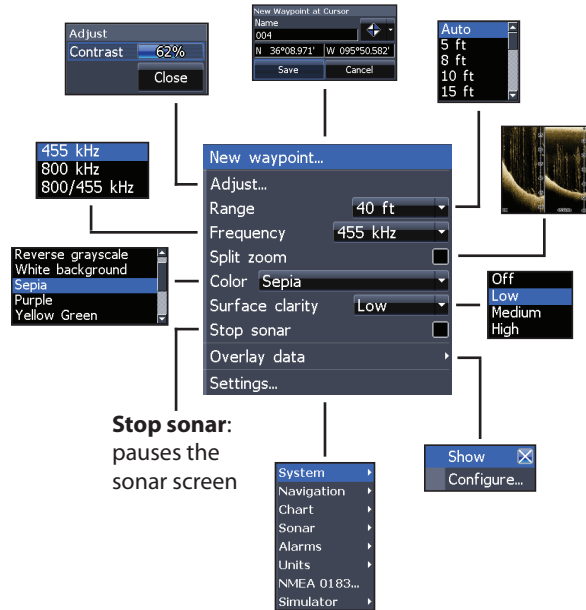
## Trackback

You can review your sonar history by pressing the keypad to the left until the screen starts to move in reverse and the sonar history bar appears at the bottom of the screen.

Move the sonar history bar all the way to the right to resume normal sonar scrolling, or press **MENU** and select *Exit cursor mode*.

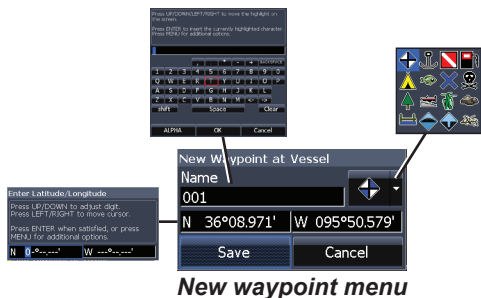
## DSI menu

Press Menu from any DSI page to view the DSI menu.



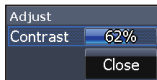
## New Waypoint

Places a waypoint at your current position or at the cursor position. From the new waypoint menu, you can input a waypoint name, select an icon and input a desired latitude/longitude.



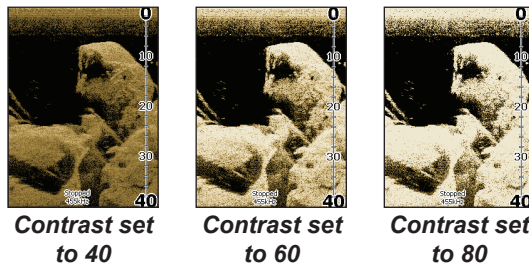
## Adjust

Accesses the Contrast adjustment scrollbar, allowing you to adjust contrast settings.



## Contrast

Adjusts the brightness ratio between light and dark areas on the screen, making it easier to distinguish suspended objects from the background.



DSI units do not have a Sensitivity setting like traditional sonar units. Contrast functions as the sensitivity setting for DSI units.

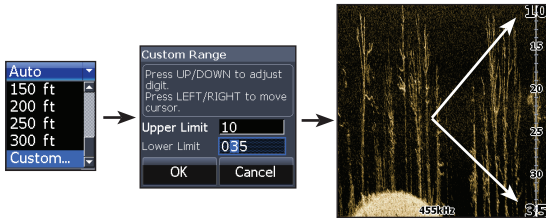
## Range

Selects the deepest range shown on the display. Range settings display the section of the water column from the water surface to the selected depth range.



### Custom Range — Upper and Lower Limits

Used to select the upper limit and lower limit of a section of the water column. That allows you to view a section of the water column that does not include the water surface.



Upper and lower limits must be at least 6.5 ft (2m) apart.



**NOTE:** When using a custom range, you may not receive any digital depth readings, or you may receive incorrect depth information.

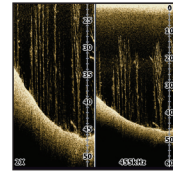
### Frequency

Controls the transducer frequency used by the unit. 800 kHz offers the best resolution, while 455 kHz has greater depth coverage.



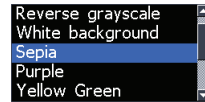
### Split Zoom

Changes the display to a split zoom view.



### Color

Used to change the unit's color palette. The Color setting allows you to select a palette best suited for your fishing conditions.



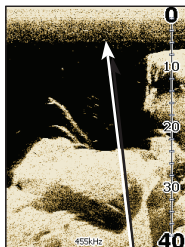
The White background palette works well for suspended targets. Purple is useful for viewing structure detail and determining bottom hardness. Sepia is best for looking at bottom detail. Mono-

# DSI

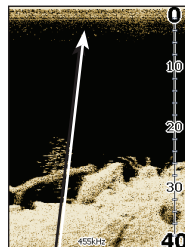
chrome units only support Grayscale and Reverse Grayscale color settings.

## Surface Clarity

Surface Clarity reduces surface clutter by decreasing the sensitivity of the receiver near the surface.



**Surface Clarity set to Low.**



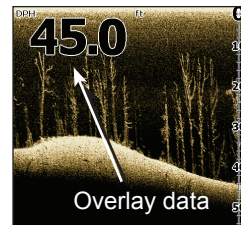
**Surface Clarity set to High.**

## Stop Sonar

Pauses the sonar chart, allowing you to get a better look at suspended targets and structure.

## Overlay Data

Allows you to select data (water temperature, depth, etc) to be displayed on top of the DSI screen.



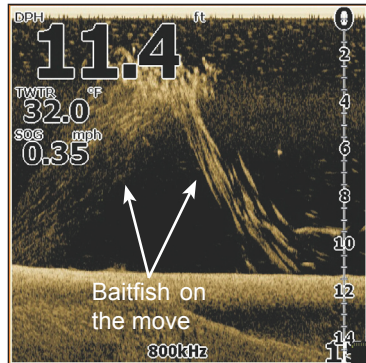
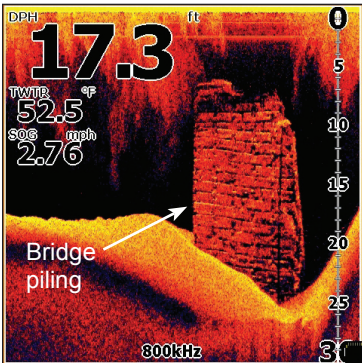
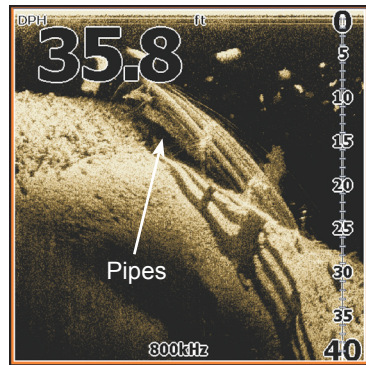
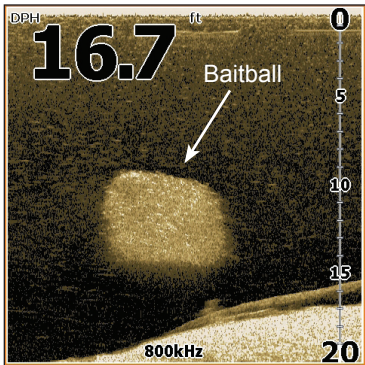
Overlay data setup is covered in the Pages section.

## Settings

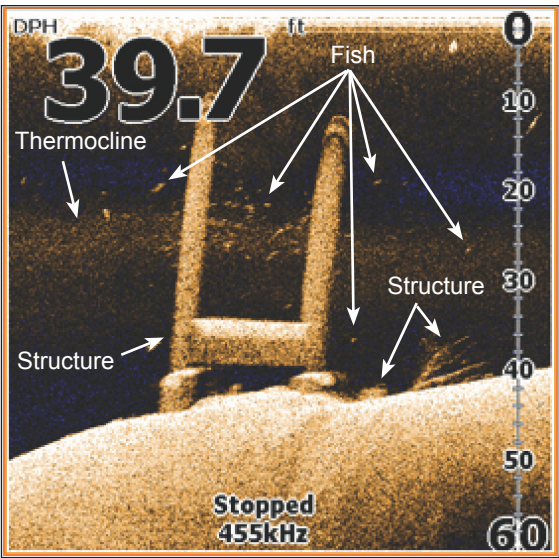
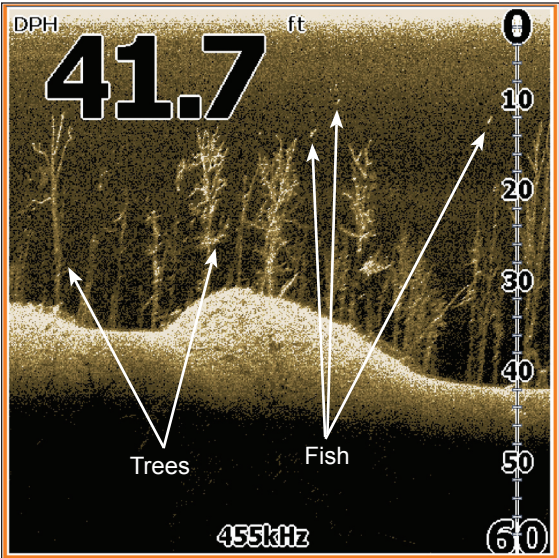
Accesses the settings menu.



# DSI Interpretation



# DSI Interpretation



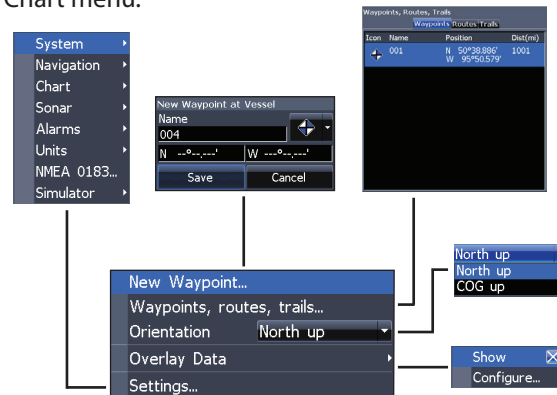
## Using your Chart

This section covers chart operation, which includes saving, loading and navigating, waypoints, routes and trails and using chart menus, context menus and submenus.



## Chart Menu

Press Menu from any Chart pages to open the Chart menu.



**Chart menu**

## New Waypoint

Creates a waypoint at your current location or at the cursor position. When the cursor is on the screen, waypoints will be saved at the cursor position; conversely, if the cursor is not displayed onscreen, waypoints will be saved at your current position.

# Chart

## Waypoints, Routes, Trails

Used to create, edit, navigate and delete waypoints, routes and trails.

Press the keypad left/right to toggle between waypoint, routes and trails tabs.

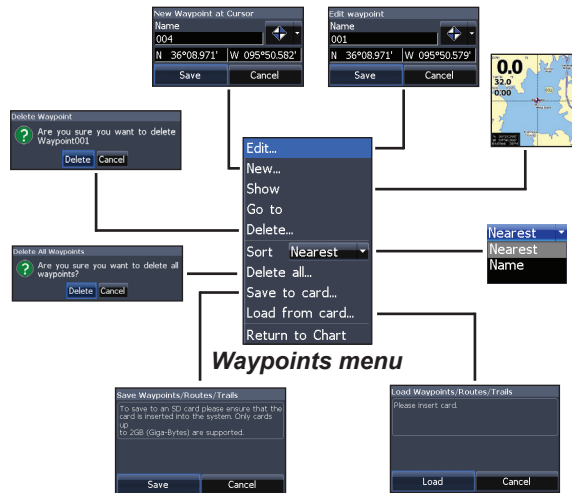
Icon	Name	Position	Dist(m)
001		N 50°38.886' W 95°50.579'	1001

Waypoints Screen



- Edit...
- New...
- Show
- Go to
- Delete...
- Sort Nearest
- Delete all...
- Save to card...
- Load from card...
- Return to Chart

Waypoints menu



Waypoints menu

## Edit

Allows you to edit the name, icon and latitude/longitude of a selected waypoint.

## New

Creates a new waypoint at the cursor or vessel position. You can also select waypoint name, icon and latitude/longitude from the new waypoint menu.



## Show

Displays the selected waypoint on the map.

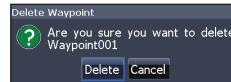


## Goto

Allows you to navigate to a waypoint.

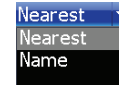
## Delete and Delete All

Delete is used to delete a selected waypoint. Delete All deletes all waypoints.



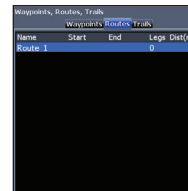
## Sort

Controls how the waypoints list will be sorted — by name or by nearest.

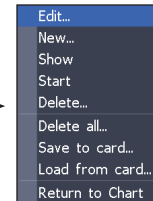


## Routes Screen

Used to create, edit, navigate and delete routes. Use the keypad to highlight the Routes tab to access the Routes screen.



Routes screen



Routes menu

## Creating a route

Routes can be created by inserting waypoints from the waypoints list or by using the cursor to position new points on the chart. You also can add waypoints to a route by selecting them from the chart screen.

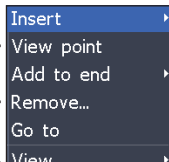
# Chart

Shows selected route waypoint on the chart



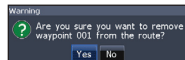
Inserts waypoint between existing route waypoints

Waypoint from list...  
Point using chart



Waypoint from list...  
Point using chart

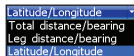
Adds waypoint to end of the route



Remove waypoint

**Route waypoint menu**

Starts navigation to the selected route waypoint

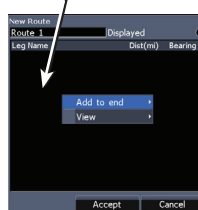


Controls how waypoints are listed

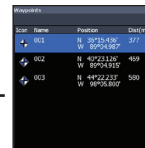
## To create a route from waypoint list:

1. Press **MENU** from the Routes screen.
2. Select *New...* and press **ENTER**.
3. Press the keypad down to select the Leg name field and press **ENTER**.

Leg name field



Waypoint from list...  
Point using chart



4. Press **MENU**, select *Add to End* and press **ENTER**.
5. Highlight *Waypoint* from list and press **ENTER**.
6. Select the desired waypoint and press **ENTER**.
7. Press **MENU** and select *Add to end* to add another waypoint to the route.
8. When the route is complete, press **MENU**, select *Stop Editing* and press **ENTER**.
9. Select *Save* and press **ENTER**.

## Creating a route using points from chart:

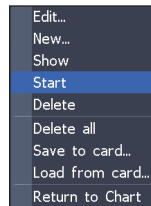
1. Repeat Steps 1-4 from the instructions for Creating a route from waypoint list.
2. Select *Points from chart* and press **ENTER**. The chart screen will appear.
3. Move the cursor to the desired location. Press **ENTER** to set a waypoint.
4. Repeat Step 3 to add more route waypoints.
5. Press **MENU** and select *Stop adding*. Press **ENTER**.
6. Highlight the *Save* button and press **ENTER**.



## Navigating a route

Routes can be navigated in forward or reverse.

1. Select the desired route on the Route screen and press **MENU**.



2. Select *Start* and press **ENTER**.
3. Select *Forward* or *Reverse* and press **ENTER**.
4. Press **MENU** and select *Return to Chart*. Press **ENTER**.

# Chart

## To cancel navigation:

1. Press *Menu* from the chart screen.
2. Select *Navigation* and press **ENTER**.
3. Highlight *Cancel* and press **ENTER**.
4. Select *Yes* and press **ENTER**.

## Edit and New Route menus

Used to edit/create routes, route names and to turn on/off the route display. That allows you to display only desired routes on the map.

To access the Edit or New Route menu, select *Edit* or *New* on the Routes menu and press **ENTER**.

To finalize changes on the Edit or New Route menus, highlight the *Accept* button and press **ENTER**.

## Displayed

Used to show/hide a route on the display, which prevents the screen from being cluttered by too many routes



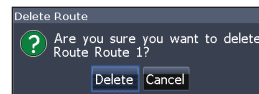
The image shows a sequence of three screenshots illustrating the process of editing a route. The first screenshot shows a keypad with 'Route 1' selected. The second screenshot shows the 'Edit Route' menu with 'Route 1' selected and the 'Displayed' checkbox checked. The third screenshot shows the 'Edit Route' menu with 'Route 1' selected and the 'Displayed' checkbox unchecked. Arrows indicate the flow from the keypad to the menu, and from the menu to the 'Displayed' checkbox. A callout box labeled 'MENU' points to the 'MENU' button on the keypad. A callout box labeled 'Turns on/off route display on map' points to the 'Displayed' checkbox.

Use keypad to select Route leg window

Turns on/off route display on map

## Delete and Delete All

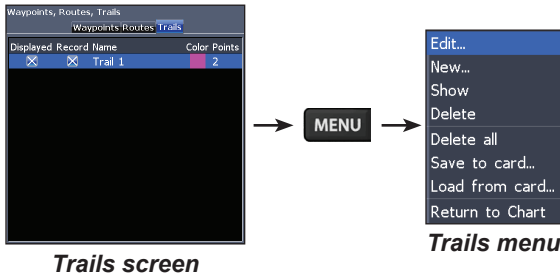
Delete is used to delete individual routes. Delete All, removes all routes.





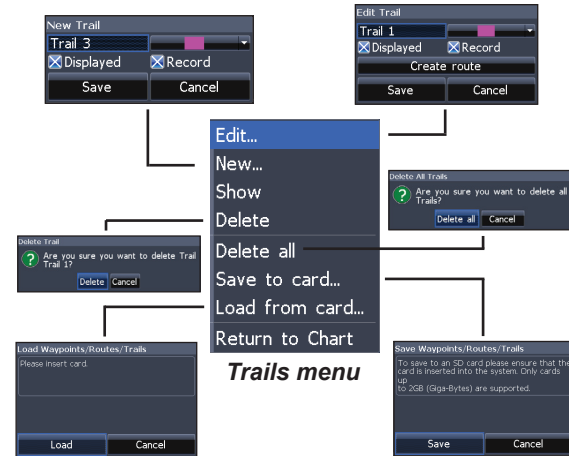
## Trails Screen

Used to create, edit, navigate and delete trails. Use the keypad to highlight the Trails tab to access the Trails screen.



## Creating trails

When creating a trail you can customize the trail name and color from the New Trail.



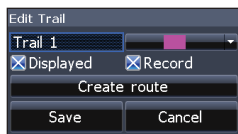
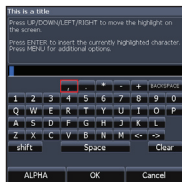
## To create a trail:

1. Select *New* and press **ENTER**. The New Trail will appear.
2. Use the keypad to highlight *Record* and press **ENTER** to make the trail active/inactive.
3. Select *Save* and press **ENTER**.

# Chart

## *Edit and New Trail menus*

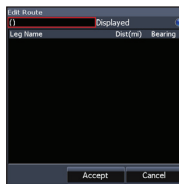
Allows you to edit/create trails, select trails names, trail color, trail display and the trail being recorded. You can also convert a trail into a route from the Edit Trail menu.



Turns on/  
off trail  
display  
on map

Turns on/  
off trail  
recording

*Edit Trails menu*



## *Navigating a trail*

A trail must be saved as a route before it can be navigated.

### *To save a trail as a route:*

1. Highlight the desired trail on the Trails screen and press **ENTER**. The Edit Trail menu will appear.
2. Highlight *Create Route* and press **ENTER**. The Edit Route menu will appear.
3. Highlight *Done* and press **ENTER**.
4. For navigation instructions refer to the Navigating a route segment.

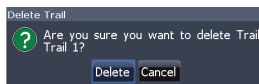
## *Displayed and Record*

Displayed allows you to show/hide trails on the map display, preventing the screen from being cluttered with trails.

The Record command allows you to record or resume recording a desired trail.

## Delete and Delete All

Delete is used to remove individual trails. Delete All removes all trails.



## Orientation

Allows you to select North Up or Course Over Ground (COG) as the map orientation.



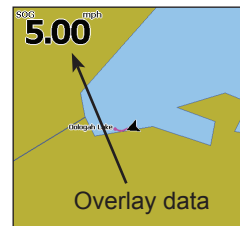
**North Up**



**COG**

## Overlay Data

Allows you to select data (course over ground, etc) to be displayed on top of the Chart screen.



Overlay data setup is covered in the Pages section.

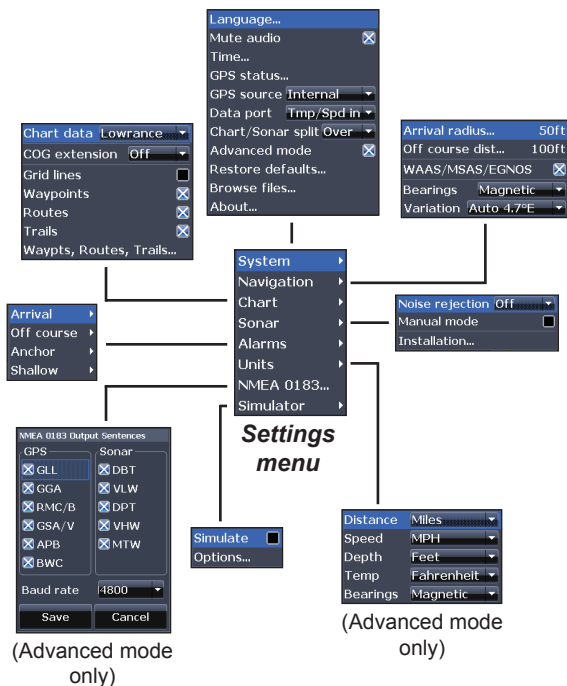
## Settings

Accesses the Chart settings menu.

# Settings

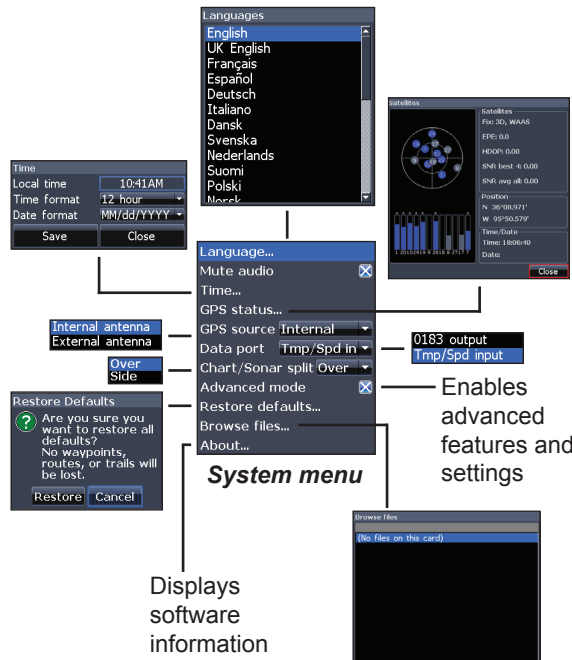
## Settings Menu

Press Menu twice to access the Settings menu.



## System

Adjusts unit settings like language, mute audio and advanced mode.



## Set Language

Selects the language used on menus and text boxes.

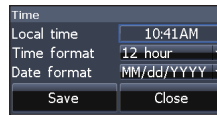


## Mute Audio

Turns on/off unit audio, like key beeps, alarm sounds, etc.

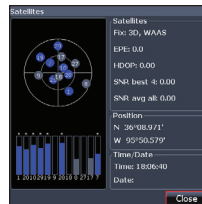
## Time

Used to set local time, and select the time and date format.



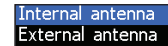
## GPS Status

Monitors the location of satellites in view and the quality of the unit's satellite lock-on.



## GPS Source (Elite-5 DSI only)

Selects the antenna your unit will use for GPS. You will use the built-in GPS antenna unless you have a LGC-16W external antenna (p/n: 000-00146-001).



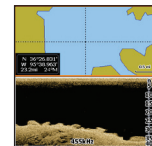
## Data Port

Selects the type of device connected to the unit's Data port. The port can be configured for use as a NMEA 0183 port or a secondary speed/temp sensor.



## Chart/Sonar Split

Allows you to display the Chart/Sonar combo page with with pages split vertically or horizontally. Chart/Sonar split is covered in the pages section.



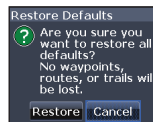
# Settings

## Advanced Mode

Enables features and settings only available with unit in Advanced Mode.

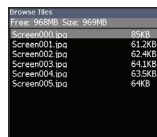
## Restore Defaults

Switches the unit back to default settings.



## Browse Files

Allows you to view a list of the files saved to the microSD card.



## Saving Screenshots

You can save screenshots to a microSD card by inserting a microSD card into the card slot and pressing Power and then Zoom (+).



**NOTE:** You cannot save screenshots to a Navionics card.

You must view files on a computer or other microSD compatible device.

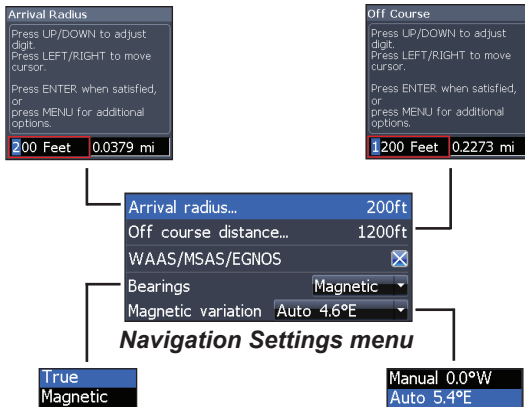
## About

Displays software information about this unit. Before attempting a software update, you can check the version of software your unit is using by accessing the About screen.

Lowrance periodically updates unit software to add features and improve functionality. To see the latest available software version go to [www.lowrance.com](http://www.lowrance.com).

## Navigation

Controls Arrival Radius and Off Course distance settings and is used to turn on/off WAAS/MSAS/EGNOS.

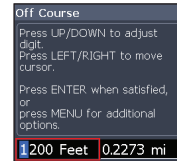


## Arrival Radius

Sets the arrival radius threshold for the Arrival alarm. The arrival alarm will sound when your vessel comes within a selected distance (arrival radius) of the destination waypoint.

## Off Course Distance

Sets Off Course Distance threshold for the Off Course alarm. When the selected off course distance is exceeded, the Off Course alarm will sound when the alarm is enabled.



## WAAS/MSAS/EGNOS

Turns on/off the Wide Area Augmentation System (WAAS), Multi-Functional Satellite Augmentation System (MSAS) and European Geostationary Navigation Overlay Service (EGNOS).

All three systems help increase GPS accuracy for different parts of the world.

# Settings

## Bearings

Controls whether bearing will be calculated using True North or Magnetic North. Magnetic North should be used when navigating with a compass course or heading; otherwise use the default setting, True North.

## Magnetic Variation

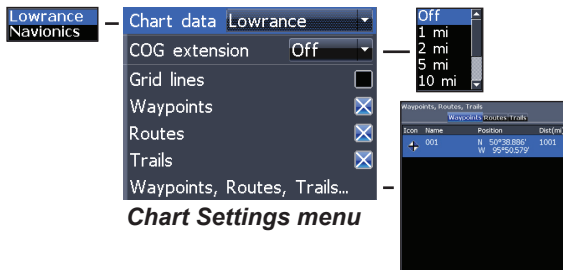
Controls whether magnetic variation will be calculated using Automatic or Manual settings. Magnetic variation is the angle between magnetic north and true north. The automatic setting reconciles the variation for you.



**WARNING:** You should only use the Manual magnetic variation setting if you have variation information from a verified source.

## Chart

Controls map data used on the chart screen as well as display settings like grid lines, waypoints, routes and trails.



**Chart Settings menu**

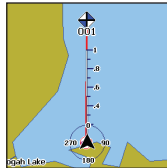
## Chart Data

Selects map data that will be used on the Chart display (Lowrance or Navionics regional map). Go to [Navionics.com](http://Navionics.com) to see a full selection of available charts.



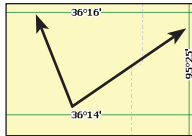
## COG Extension

A line extending from the front of the current position icon that estimates time and distance it will take to get to areas in front of you.



## Grid Lines

Displays base values for latitude and longitude, making it easier to estimate your location on the latitude/longitude scale.



## Waypoints, Routes and Trail displays

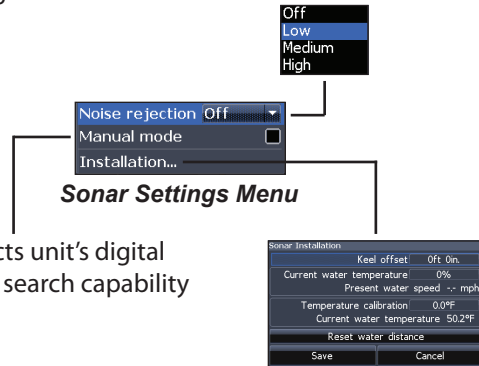
From the Chart Settings menu, you can turn on/off waypoint, route and trail display properties. Turning off display properties allows you to get a better view of the map, if the screen becomes cluttered with waypoints, routes and/or trails.

## Waypoints, Routes, Trails

Accesses the Waypoints, Routes & Trails screen. Waypoints, Routes and Trails are covered in the Chart section.

## Sonar

Used to make adjustments to Sonar options and settings.



Restricts unit's digital depth search capability

# Settings

## Noise Rejection

Uses advanced signal processing to monitor the effects noise (boat pumps, water conditions, engine ignition systems, etc.) has on your display, and then filters out the undesired signals.

## Manual Mode

Restricts digital depth capability, so the unit will only send sonar signals to the selected depth range. That allows the display to continue smooth scrolling if the bottom depth is out of transducer range.

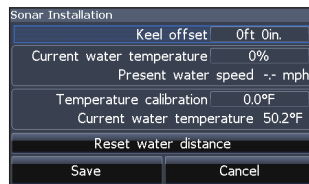


**WARNING:** Manual mode should only be used by advanced sonar users.

When the unit is in manual mode, you may not receive any depth readings, or you may receive incorrect depth information.

## Installation

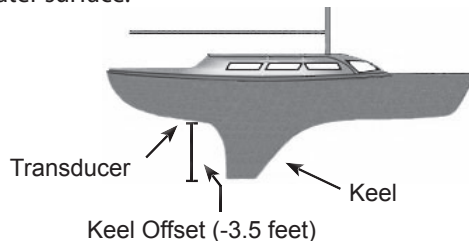
Provides access to Keel Offset and Temp Calibration settings.



**Installation menu**

## Keel Offset

All transducers measure water depth from the transducer to the bottom. As a result, water depth readings do not account for the distance from the transducer to the keel or from the transducer to the water surface.



Before setting keel offset, measure the distance from the transducer to the lowest part of the keel. If, for example, the keel is 3.5 feet below the transducer, it will be input as -3.5 feet.

## Temperature calibration

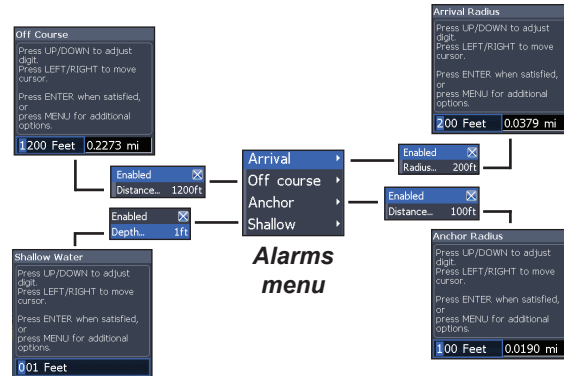
Calibrates data from the transducer temperature sensor with data from a known temperature source to ensure the accuracy of temperature information.

## Reset water distance

Reset Water Distance to zero.

## Alarms

Enables alarms and selects alarm thresholds. Arrival, Off Course and Anchor alarms are only available in Advanced mode.

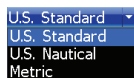


Alarms	
<b>Arrival</b>	sounds alarm when you are within a selected distance of your destination <b>(Advanced Mode only)</b>
<b>Off Course</b>	sounds alarm when your course exceeds a selected off-course threshold <b>(Advanced Mode only)</b>
<b>Anchor</b>	sounds alarm when vessel moves a selected distance <b>(Advanced Mode only)</b>
<b>Shallow</b>	sounds alarm when vessel enters water shallower than the selected shallow threshold

# Settings

## Units

Allows you to select the unit of measure used by the unit. Unit options vary depending on whether the unit is in basic or advanced mode.



**Basic Mode**



**Advanced Mode**

## NMEA 0183 Output

Allows users to select NMEA 0183 sentences the unit will use when connected to a VHF radio or other NMEA 0183 device.

## Simulator

Simulates GPS and sonar activity. Simulations can be customized on the Simulator options menu.



**A**

About 32  
 Advanced Mode 9  
 Alarms 37  
 Arrival Radius 33

**B**

Bearings 34  
 Browse Files 32

**C**

Cancel navigation 26  
 Chart Data 34  
 Chart Menu 21  
 Chart Page 12  
 Chart Settings 34  
 Chart/Sonar page 12  
 Chart/Sonar split 13  
 COG Extension 35  
 Color 17  
 Contrast 16  
 Creating a route 23

Creating trails 27  
 Cursor 9  
 Custom Range 17

**D**

Data Port 31  
 Depth Range 16  
 Dialogs 8  
 Dropdown menus 7  
 DSI menu 15  
 DSI Page 11

**E**

Editing waypoints 22  
 Entering text/numbers  
 8

**F**

Frequency 17

**G**

Goto waypoint 23

GPS Source 31  
 GPS Status 31  
 Grid Lines 35

**I**

Installation menu 36

**K**

Keel Offset 36

**M**

Magnetic Variation 34  
 Man  
 Overboard  
 waypoint 3  
 Man Overboard way-  
 point 3  
 Manual Mode 36  
 microSD cards 4

**N**

Navigating a route 25

Navigating a trail 28  
 Navigation Settings 33  
 New Waypoint 21  
 NMEA 0183 38  
 Noise Rejection 36

**O**

Off Course Distance 33  
 On/Off features 7  
 Orientation 29  
 Overlay Data 13, 18, 29  
 Configure 13  
 Customizing 14  
 Show 13

**P**

Page menus 6  
 Pages 5

**R**

Range 16  
 Reset water distance 37

# Index

Restore defaults 10  
Routes Screen 23

## S

Saving Screenshots 32  
Scrollbars 7  
Selecting Pages 5  
Set Language 31  
Settings Menu 30  
Setup wizard 5  
Simulator 38  
Software Updates 32  
Sonar Settings 35  
Sort waypoints 23  
Standby mode 9  
Steer Page 11  
Stop Sonar 18  
Surface Clarity 18  
System menu 30

## T

Temperature calibration 37

Time 31  
Trackback 15  
Trails Screen 27  
Turn unit on/off 3

## U

Unit Controls 3  
Units 38  
Upper and Lower Limits 17

## W

WAAS/MSAS/EGNOS 33  
Waypoints, Routes, Trails 22

# Specifications

Elite 5 DSI	
General	
<b>Case Size</b>	5.4" H (134mm) x 6.8"W (174mm); 6" H (152mm) with bracket
<b>Display</b>	(5" diagonal) Enhanced Solar MAX™ 480x480 256 color TFT LCD
<b>Backlight</b>	Cold cathode fluorescent lamp (10 levels)
<b>Communications</b>	NMEA 0183 Output
<b>Shared devices supported</b>	VHF and Autopilot through NMEA 0183
Power	
<b>Transmit Power</b>	4000W PTP; 500W RMS
<b>Power Requirement</b>	12 Volts DC
<b>Voltage Input</b>	10 to 17V
<b>Current drain</b>	13.5V (630mA)
<b>Fuse type</b>	3-amp Automotive (not supplied)

DSI Sonar	
<b>Max depth</b>	250 ft (76m)
<b>Transducer Frequency</b>	455/800kHz
<b>Max speed</b>	50 mph (80 kph) 2-8 mph (3-12 kph) optimal for imaging
<b>Transducer</b>	DSI (Downscan) transducer
<b>Transducer cable</b>	20ft (6m)
GPS	
<b>Mapping card slot</b>	microSD (up to 2GB); microSDHC high capacity cards are not compatible
<b>GPS Antenna</b>	16 parallel channel (internal); optional external GPS antenna sold separately
<b>Mapping compatibility</b>	Fishing Hot Spots, NauticPath & Navionics (HotMaps, Premium & Gold)
<b>Waypoints, Routes &amp; Trails</b>	Up to 3000 waypoints, 100 routes and 100 retraceable plot trails

# Specifications

Elite 4 DSI & Mark 4 DSI	
General	
<b>Case Size</b>	5.6" H (144mm) x 3.7" W (94.3mm); 6.4" H (164mm) with bracket
<b>Display</b>	<b>Elite 4:</b> (3.5" diagonal) 320x240 (256 color) TFT LCD <b>Mark 4:</b> (3.5" diagonal) 320x240 monochrome TFT LCD
<b>Backlight</b>	White LED (10 levels)
<b>Communications</b>	NMEA 0183 Output
<b>Shared device supported</b>	VHF and Autopilot through NMEA 0183
Power	
<b>Transmit Power</b>	2800W PTP; 350W RMS
<b>Power Requirement</b>	12V
<b>Voltage Input</b>	10 to 17V
<b>Current drain</b>	at 13.5V (250mA)
<b>Fuse type</b>	3-amp Automotive (not supplied)

DSI Sonar	
<b>Max depth</b>	200 ft (76m)
<b>Transducer Frequency</b>	455/800kHz
<b>Max speed</b>	50 mph (80 kph) 2-8 mph (3-12 kph) optimal for imaging
<b>Transducer</b>	DSI (Downscan) transducer
<b>Transducer cable</b>	20ft (6m)
GPS	
<b>Mapping card slot</b>	microSD (up to 2GB); microSDHC high capacity cards are not compatible
<b>GPS Antenna</b>	16 parallel channel (internal); optional external GPS antenna sold separately
<b>Mapping compatibility</b>	Fishing Hot Spots, NauticPath & Navionics (HotMaps, Premium & Gold)
<b>Waypoints, Routes &amp; Trails</b>	Up to 3000 waypoints, 100 routes and 100 retraceable plot trails



## Navico Databases License Agreement

THIS IS A LEGAL AGREEMENT BETWEEN THE END-USER WHO FIRST PURCHASES THIS PRODUCT AS A CONSUMER ITEM FOR PERSONAL, FAMILY, OR HOUSEHOLD USE ("YOU") AND NAVICO, THE MANUFACTURER OF THIS PRODUCT ("WE", "OUR", OR "US"). USING THE PRODUCT ACCOMPANIED BY THIS LICENSE AGREEMENT CONSTITUTES ACCEPTANCE OF THESE TERMS AND CONDITIONS. IF YOU DO NOT ACCEPT ALL TERMS AND CONDITIONS, PROMPTLY RETURN THE PRODUCT WITHIN 30 DAYS OF PURCHASE. PLEASE RETURN USING THE ENCLOSED UPS SHIPPING LABEL AND INCLUDE: PROOF OF PURCHASE, NAME, ADDRESS, AND PHONE NUMBER. YOUR PURCHASE PRICE AND ANY APPLICABLE TAXES WILL BE REFUNDED. PLEASE ALLOW 4-6 WEEKS TO PROCESS YOUR REFUND.

1. This License Agreement applies to the one or more databases that your product may contain. We refer to these singly as a "Database" and together as the "Databases." Your product may thus include the "WBS Database" which contains worldwide background surface mapping data, the "SmartMap Database" which contains inland mapping data, or other Databases.
2. The Databases that your product may contain are licensed, not sold. We grant to you the nonexclusive, nonassignable right to use these Databases for supplemental navigation reference purposes, but only as long as you comply with the terms and conditions of this License Agreement. We reserve the right to terminate this license if you violate any aspect of this License Agreement. You are responsible for using official government charts and prudent navigation for safe travel.
3. The Databases housed in your product are protected by the copyright notices appearing on the product or its screen(s). You may NOT modify, adapt, translate, reverse engineer, decompile, disassemble, rent, lease, or resell any Database, and you may NOT create derivative works based upon any Database or its contents. Any unauthorized reproduction, use, or transfer of a Database may be a crime and may subject you to damages and attorney fees.
4. This License Agreement will terminate immediately without prior notice from us if you fail to comply with or violate any of the provisions of this Agreement. Upon termination, you will promptly return all products containing one or more Databases to us.
5. Prices and programs are subject to change without notice.
6. This License Agreement shall be governed by the laws of the State of Oklahoma and comprises the complete and exclusive understanding between you and us concerning the above subject matter.

## Databases Limited Warranty

"We", "our", or "us" refers to Navico, the manufacturer of this product. "You" or "your" refers to the first person who purchases the product as a consumer item for personal, family, or household use. The Databases Limited Warranty applies to the one or more databases that your product may contain. We refer to each of these as a "Database" or together as the "Databases." Your product may thus include the "WBS Database" which contains worldwide background surface mapping data, the "SmartMap Database" which contains inland mapping data, or other Databases.

We warrant to you that we have accurately compiled, processed, and reproduced the portions of the source material on which the Databases are based. However, we are under no obligation to provide updates to the Databases, and the data contained in the Databases may be incomplete when compared to the source material. WE MAKE NO EXPRESS OR IMPLIED WARRANTY OF ANY KIND ABOUT THE ACCURACY OF THE SOURCE MATERIAL ITSELF, INCLUDING BUT NOT LIMITED TO IMPLIED WARRANTIES OF MERCHANTABILITY OR FITNESS FOR A PARTICULAR PURPOSE.

If there is a defect in any Database, your exclusive remedy shall be, at our option, either a refund of the price you paid for the product containing the defective Database or a replacement of such product. WE WILL NOT UNDER ANY CIRCUMSTANCES BE LIABLE TO ANYONE FOR ANY SPECIAL, CONSEQUENTIAL, INCIDENTAL, OR OTHER INDIRECT DAMAGE OF ANY KIND. Some states do not allow the exclusion or limitation of incidental or consequential damages, so the above limitations or exclusions may not apply to you.

This warranty does NOT apply in the following circumstances: (1) when the product has been serviced or repaired by anyone other than us; (2) when the product has been connected, installed, combined, altered, adjusted, or handled in a manner other than according to the instructions furnished with the product; (3) when any serial number has been effaced, altered, or removed; or (4) when any defect, problem, loss, or damage has resulted from any accident, misuse, negligence, or carelessness, or from any failure to provide reasonable and necessary maintenance in accordance with the instructions of the owner's manual for the product.

We reserve the right to make changes or improvements in our products from time to time without incurring the obligation to install such improvements or changes on equipment or items previously manufactured.

This warranty gives you specific legal rights and you may also have other rights which may vary from state to state.

Your remedies under this warranty will be available so long as you can show in a reasonable manner that the defect occurred within one (1) year from the date of your original purchase, and we must receive your warranty claim no later than 30 days after such 1-year period expires. Your claim must be substantiated by a dated sales receipt or sales slip.

### **How to Obtain Service... ..in the USA:**

Contact the Factory Customer Service Department. Call toll-free:

**800-324-1356**

8 a.m. to 5 p.m. Central Standard Time, M-F

*Navico may find it necessary to change or end shipping policies, regulations and special offers at any time. They reserve the right to do so without notice.*

### **...in Canada:**

Contact the Factory Customer Service Department. Call toll-free:

**800-661-3983**

**905-629-1614 (not toll-free)**

8 a.m. to 5 p.m. Eastern Standard Time, M-F

### **...outside Canada and the USA:**

Contact the dealer in the country where you purchased your unit. To locate a dealer near you, see the instructions in paragraph number 1 below.

### **Accessory Ordering Information**

LEI Extras is the accessory source for sonar and GPS products manufactured by Lowrance Electronics. To order Lowrance accessories, please contact:

- 1)** Your local marine dealer or consumer electronics store. To locate a Lowrance dealer, visit the web site, [www.lowrance.com](http://www.lowrance.com), and look for the Dealer Locator; or, consult your telephone directory for listings.
- 2)** U.S. customers visit our web site [www.lei-extras.com](http://www.lei-extras.com).
- 3)** Canadian customers: Lowrance Canada, 919 Matheson Blvd. E. Mississauga, Ontario L4W2R7 or fax 905-629-3118. Call toll free in Canada, 800-661-3983, or dial 905 629-1614 (not toll free), 8 a.m. to 5 p.m. Eastern Standard Time, M-F.

Visit our website:

[www.lowrance.com](http://www.lowrance.com)



\* 9 8 8 - 1 0 1 5 3 - 0 0 1 \*

© Copyright 2011  
All Rights Reserved  
Navico Holding AS