

**B&G**<sup>®</sup>

MARINE ELECTRONICS FOR *SAILING*



2023

# CONTENTS

---

WINNING SINCE 1956 ..... 4-5

CHARTPLOTTERS..... 6-7

SAILING FEATURES..... 8-9

VULCAN™ CHARTPLOTTERS..... 10-11

ZEUS® S CHARTPLOTTERS..... 12-13

ZEUS® 3S CHARTPLOTTERS..... 14-15

ZEUS® 3S GLASS HELM..... 16-17

CHARTPLOTTER ACCESSORIES ..... 18-19

NEMESIS™ SAILING DISPLAY ..... 20-21

TRITON™ 2 INSTRUMENTS ..... 22-23

TRITON™ 2 AUTOPILOTS ..... 24-25

TRITON™ EDGE™ SAILING PROCESSOR . 26-27

WS300 AND WS700 WIND SENSORS ... 28-29

H5000 INSTRUMENTS..... 30-31

SENSORS ..... 31-32

WTP3 ..... 34-35

HALO® RADAR..... 36-37

COMMUNICATIONS & CAMERAS..... 38-39

CONNECTED VESSEL ..... 40-41

CHARTS AND WEATHER..... 42

WORLDWIDE SUPPORT..... 43

# PASSIONATE ABOUT SAILING





# WINNING SINCE 1956

From racing around the world to racing around the cans, B&G has been at the forefront of yacht racing for over 65 years.

In this environment, precision and accuracy are everything. One subtle shift in the wind, a tenth of a knot of boat speed or making the correct sail choice, can be the difference between winning and losing. B&G is proud to have supported so many winners.

## 1966/7

Sir Francis Chichester sails solo around the world, becoming the first man to do so, in Gipsy Moth IV, fitted with B&G.

## 1973

Ramon Carlin wins the first ever Whitbread Round the World Race with Sayula II fully equipped with B&G.

## 1990

B&G was installed on 90% of the 1990 Whitbread boats, including the outright winner Steinlager II, skippered by Sir Peter Blake, as well as Tracy Edwards' Maiden, the first all-female crew.

## 2011

B&G equipment is installed on every Volvo Ocean Race boat, including the winner Groupama.

## 2019

B&G becomes Technical Supplier for the inaugural SailGP race Series.

## 2013/17/21

Vendée Globe wins – François Gabart wins in 2013, Armel Le Cléac'h in 2017 and Yannick Bestaven in 2021 all with B&G.

## RECENT B&G WINS:

### Ocean Race

#### (formerly Volvo Ocean Race)

1974 - Sayula II

1978 - Flyer

1982 - Flyer II

1986 - L'esprit d'équipe

1990 - Steinlager 2

1994 - NZ Endeavour/ Yamaha

1998 - EF Language

2002 - Illbruck Challenge

2006 - ABN Amro I

2009 - Ericsson 4

2012 - Groupama 4

2015 - Abu Dhabi

2018 - Dongfeng

### Vendée Globe

2013 - François Gabart

2017 - Armel Le Cléac'h

2021 - Yannick Bestaven

### Sydney Hobart 2022

Line Honours

Double-handed

### Route de Rhum 2022

Ultim Class -

Maxi Edmond de Rothschild

IMOCA Class - LinkedOut

### Fastnet 2021

Line Honours 1st, 2nd & 3rd

IRC Overall 1st, 2nd & 3rd

### Transat Jacques Vabre 2021

IMOCA class - LinkedOut

Ultim class - Maxi Edmond de

Rothschild

### And many more....





© Amory Ross



EVERY RACE. EVERY PODIUM. EVERY WINNER.  
50 YEARS OF B&G + THE OCEAN RACE.



© Simon Batty / iStock

TECHNICAL SUPPLIER OF

**SAIL GP**





# CHARTPLOTTERS

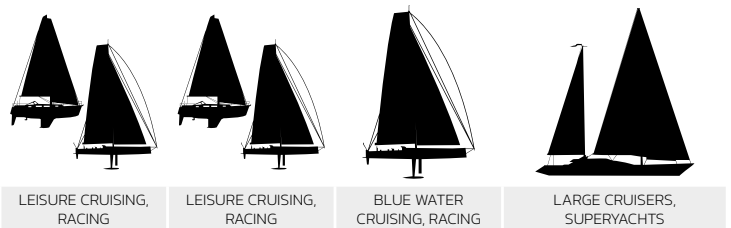
Designed to be as intuitive as a tablet or smartphone, B&G chartplotters are a one-destination screen to get all the information you need to set sail and navigate with total confidence.



	Vulcan™	NEW Zeus® S	Zeus® 3S	Zeus® 3S Glass Helm
Sailing and Racing Software	✓	✓**	✓	✓
Instrument Data	✓	✓**	✓	✓
Multi-Touch Screen	✓	✓	✓	✓
AIS & VHF Compatible	✓	✓	✓	✓
Pilot Control	✓	✓	✓	✓
Radar Capable	✓	✓	✓	✓
Entertainment Integration	✓	✓	✓	✓
B&G® App Compatibility	✓	✓	✓	✓
Built-In Wi-Fi	✓	✓	✓	✓
Internal GPS	✓	✓	✓	✓
MOB	✓	✓	✓	✓
Multi-Display Networking		✓	✓	✓
SolarMAX™ HD Ultra-Bright Display		✓	✓	✓
High-Spec Processor for Enhanced Performance		✓	✓	✓
Choice of Mapping – C-MAP® & Navionics®	✓		✓	✓
Built-In ForwardScan®	✓	*	✓	✓
Keypad – For Extreme Conditions			✓	✓
Sailing Modes		✓		
Next-Gen C-MAP X Charting Compatibility		✓		
Next-Gen Safety Alerts		✓		

Sizes 7" & 9" 7", 9" & 12" 9", 12" & 16" 16", 19" & 24"

\* replaced with next-gen features in Zeus S  
 \*\* enhanced next-gen features in Zeus S



Vulcan™

Zeus® S

Zeus® 3S

Zeus® 3S Glass Helm



# SAILING FEATURES

**As sailors, we know that cruising or racing in a sailing boat is different. Enjoy stress-free journeys and get where you want to go quickly and safely with B&G sailing specific software.**

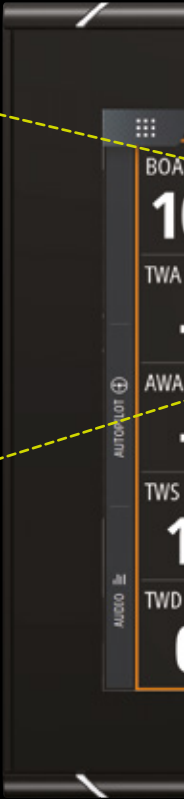
**B&G SailSteer™ provides all your important instrument and navigation information in one view.**

## WIND

Wind angle and direction, referenced to the boat and compass

## WAYPOINT

Bearing to next waypoint, when aligned with layline it is time to tack



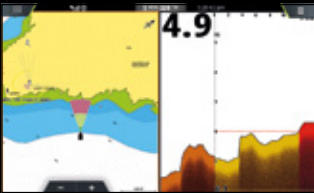
## LAYLINES & SAILINGTIME

See your course and know when to tack to minimise beating and gybing. Laylines take into account tidal effects and displays wind shift history.



## CHARTS

B&G offers you the widest choice of charting options for sailing, including from mapping leaders C-MAP®.



## FORWARDSCAN®

See what lies ahead under the water with approaching depth information. Sail poorly-charted or unfamiliar waters confidently with a clear image of the bottom ahead of your boat.



## RADAR

Access and monitor your radar output conveniently from the chartplotter display for total control and awareness in a fully integrated sailing navigation system.





**CURRENT COURSE**

**OVERVIEW**

Heading, Course Over Ground and your current layline

**TIDE**

Tide/Current set and rate relative to boat

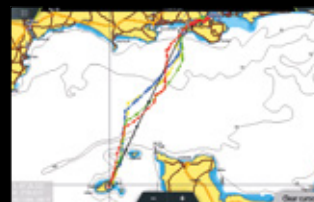
**LAYLINES**

Current and opposite tack laylines, providing opposite tack course



**AUTOPILOT CONTROL**

Engage and take charge of the autopilot directly from your B&G chartplotter and enjoy the reassurance of seamless integration and control, while you sit back and relax.



**PREDICTWIND®**

High resolution wind forecasting and planning for sailing. Integrated exclusively on B&G's Zeus® and Vulcan™ products, and available via a Wi-Fi connection upon registration.



**RACEPANEL & STARTLINE**

Be on the line at full speed as the gun goes. Get the best start in the fleet, with time, distance and positioning data.



**WI-FI**

Built-in wireless technology provides an unprecedented level of connectivity between your chartplotters, tablets and smartphones. Download the free software to view (smartphone) and control (tablet) from almost anywhere on board.

# VULCAN™ CHARTPLOTTERS

Perfect for small boats including coastal cruisers and club racers. The screen can be read even in direct sunlight and Vulcan's responsive touch screen gives you easy, fingertip control.

## Key Features

COASTAL

- B&G sailing software
- Multi-touch screen
- HALO® & Broadband Radar compatible
- Built-in Wi-Fi
- ForwardScan® compatible
- NMEA 2000®

Vulcan chartplotters are easy to install and network with AIS, Radar and other on-board instruments.



Vulcan 9  
000-13214-001



Vulcan 7  
000-14082-001

Radar and chart bundles are also available, please visit the website for more information.

## ADDING A VULCAN TO YOUR BOAT IS EASY:

- Just add power and your choice of chart for navigation and chart plotting functionality, with integrated high-precision GPS antenna
- For advanced sailing features simply add: wind sensor, compass sensor and speed log
- Compatible with your existing B&G system
- Mount where and how you want, with flush and bracket mounting options
- Compatible with 3rd party products and systems, with NMEA 2000





# ZEUS® S CHARTPLOTTERS

With its unique sailing features, Zeus S is the next generation of chartplotter, perfect for coastal cruisers and club racers.

Available in three sizes, it's designed specifically to make sailing easier, giving you all the information you need in an easy-to-interpret way. Experience enhanced sailing features, a new, intuitive interface, and clear, detailed C-MAP® charting for the safest, easiest navigation.

## Key Features

- Modes for Cruising and Racing
- Award-winning sailing features
- Detailed C-MAP DISCOVER™ X and REVEAL™ X Charts
- Built-in Wi-Fi, Ethernet and NMEA 2000®
- High definition SolarMAX™ IPS touch screen, viewable from all angles and in all conditions, even with polarized sunglasses
- Full integration with HALO® Radars, Triton™ 2 Pilots, Triton 2 and Nemesis® instruments, sensors and more
- Setup Wizard to get you up and running quickly
- B&G App integration
- IP Video camera support
- Internal 10Hz GPS

COASTAL  
OFFSHORE  
RACING



Zeus S 12  
000-15225-001



Zeus S 9  
000-15221-001



Zeus S 7  
000-15217-001

Note  
Make MAGENTA to change.  
All of these part numbers are correct for the Global SKUs, but (like Lowrance), Zeus S is shipping with chart in the box for AMER and AUS/NZ, therefore each size has 3 different Item Numbers depending on Region.



### NEW SAILING MODES

See the data you need, when you need it. Simply select your Sailing Mode for your situation, giving you just the information you need for Cruising or Racing.



### DEDICATED SAILING FEATURES

Improve your sailing with easy to interpret pointers from B&G's award-winning sailing features for cruising and racing, with updates to SailSteer™, Laylines, StartLine, Routes, Racing and many more. C-MAP powered Safety Alerts guard against grounding and dangerous objects.



### EASY INTEGRATION

Put your Zeus S at the heart of a complete sailing system with easy integration. With NMEA 2000, you can connect to Autopilot, Instruments, Radar, Sailing Processors, Audio, Engines, and a wealth of other compatible products. Zeus S also integrates easily with the B&G App, letting you plan trips, review routes, and manage waypoints from home, then sync the moment you step onboard.



### DETAILED C-MAP CHARTS

C-MAP DISCOVER X and REVEAL X charts feature highly accurate data with simple viewing options for easy and clear navigation. Tides and currents projections improve trip planning and route plotting, further supported by our fastest-ever autorouting. Plus, get quick, one-touch access to POIs, tides, channels, and more.





# ZEUS® 3S CHARTPLOTTER

The Zeus 3S series are the complete navigation solution for blue water cruisers and regatta racers.

With superfast processors you can display up to 6 different information panels simultaneously, on the ultra-bright SolarMAX™ HD all-weather touchscreen, which is combined with a rotary dial and keypad for ultimate control in all conditions.

These easy to use chartplotters include all of B&G's unique and proven sailing features such as SailSteer™, Laylines, and RacePanel and integrates seamlessly with a wide range of instruments and accessories for greater safety, performance, and enjoyment on the water.

## Key Features

- B&G sailing software
- Built in Wi-Fi, ForwardScan®, NMEA 2000® and Ethernet connectivity
- Internal 10Hz GPS
- HALO® & Broadband Radar compatible
- Multi-touch screen and keypad control
- Integrated autopilot controller

OFFSHORE  
RACING



Zeus 3S 16  
000-15413-001



Zeus 3S 12  
000-15412-001



Zeus 3S 9  
000-15411-001



Zeus 3S 7  
000-13245-001

7 screen size only available in Zeus 3 model, not Zeus 3S.

Radar bundles are also available, please visit the website for more information.

## EASY TO EXPAND YOUR NETWORK

Just add power to enjoy Zeus 3S as a versatile standalone chartplotter with first-rate navigation functions. For the best experience and to take advantage of our award-winning sailing features, network your chartplotter with instruments and sensors using industry standard NMEA 2000® connectivity.

## EXCEPTIONAL VISIBILITY

The SolarMAX™ HD screen ensures perfect visibility in all conditions. Zeus 3S's screen has been tested to the limit in everything from tropical sunlight to the depths of the Southern Ocean and polar winters. You can see it through polarised sunglasses, and the responsive touchscreen works even in flying spray and rough sea.

## CHARTING OPTIONS

Zeus 3S chartplotters support a wide range of leading cartography, from C-MAP® and Navionics®. Take advantage of advanced mapping features including autorouting, dynamic tides and currents, aerial photos and detailed harbour charts to ensure you know exactly what lies beneath your keel at all times.

## SEAMLESS INTEGRATION WITH YOUR INSTRUMENTS

Enjoy a fully connected sailing experience and control and monitor your Triton™ 2 or H5000 instrument system on board from the display. Zeus 3S can also take full control of on-board systems using B&G Command and CZone™, allowing fingertip command and monitoring of lights and systems on board.



*“Enjoy exceptional situational awareness thanks to Zeus 3S’s high-performance processor. There’s plenty of processing power to run charts, radar, ForwardScan® and autopilot controls simultaneously without compromising on performance – giving you all the tools you need to enjoy the sailing, safe in the knowledge that you can monitor your surroundings.”*



# ZEUS® 3S GLASS HELM

Zeus 3S Glass Helm is the ultimate sailing navigation system for larger bluewater cruisers and superyachts.

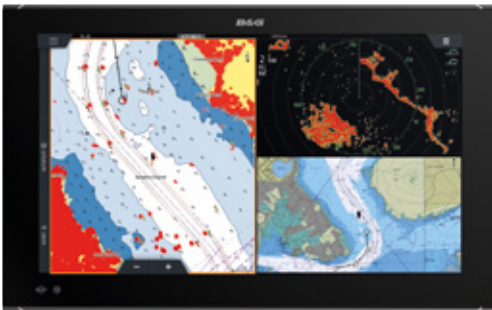
The ultra-bright full HD displays are ideal for both indoor and outdoor installations. The new processor provides super-fast loading times, smoother transitions and ability to run 6 functions simultaneously without a drop in performance. Navigate charts and use RacePanel, whilst also viewing your connected systems.

Built-in wireless connectivity links Zeus 3S to your existing mobile devices. Wired Ethernet, NMEA 2000®, and J1939 networking provide almost limitless integration options.

## Key Features

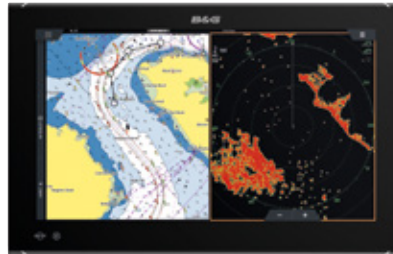
- B&G sailing software
- Low-profile, all glass touchscreen
- Ultra-bright, wide-angle, full HD display
- Built in IMX8 super fast and powerful processor (no black box required)
- HDMI and Video inputs
- NMEA 2000®, 0183, Ethernet and Wi-Fi compatibility
- Integrated Pilot control
- HALO® Radar compatible

OFFSHORE  
RACING



Zeus 3S Glass Helm 24  
**000-15052-001**

Zeus 3S Glass Helm 24  
(System Pack)  
**000-15131-001**



Zeus 3S Glass Helm 19  
**000-15050-001**

Zeus 3S Glass Helm 19  
(System Pack)  
**000-15130-001**



Zeus 3S Glass Helm 16  
**000-15048-001**

Zeus 3S Glass Helm 16  
(System Pack)  
**000-15129-001**

Included in the system pack is a ZC2 remote keypad, a GPS Antenna and Chart Card reader.

A Zeus 3S Glass Helm Processor, compatible with B&G and 3rd party monitors is also available: 000-15046-001

## POWERFUL & INTUITIVE

Take advantage of the powerful new iMX8 processor that allows for the fastest response times available and the flexibility to run many different data sources at the same time on one screen.

## DEDICATED SAILING FEATURES

With up to 6 way split screens you can view all the key sailing data you need on one screen.

All the networking support you need including; HALO® Radar, ForwardScan®, B&G Instruments, Autopilots, entertainment and digital switching systems.

## UNBEATABLE SCREEN QUALITY

Ultra bright SolarMAX™ HD touch screen allows for perfect visibility of the on screen data at all angles and all weather conditions.





# CHARTPLOTTER ACCESSORIES

Accessories to complement your B&G electronics.

## BAROMETER

Barometric trend is the offshore sailor's friend, a warning of a pending storm or calm. B&G's high resolution barometer provides data resolution of 0.1mb for highly accurate trend data.



High-Resolution Barometer **000-11552-001**

## CLASS-B AIS

See and be seen. Reduce your risk of collision with this latest generation, fully integrated, Class-B AIS transponder. Compact in size, lightweight, fully waterproof, and with low power draw.



NAIS-500 Class B AIS system **000-13609-001**  
 NSPL-500 AIS Antenna Splitter **000-13612-001**

## ZEUS CONTROLLER

Control your Zeus 3S display with the ZC2's intuitive keypad and multi-directional controller. Available in landscape or portrait versions, the ZC2 can also be used to control a B&G Pilot via any networked display.



ZC2 - Portrait mount **000-12365-001**  
 ZC2 - Landscape mount **000-12513-001**

## FORWARDSCAN®

ForwardScan forward-looking sonar shows you what lies ahead under the water with approaching depth information. Enjoy a clear and easy to read image of the bottom ahead of your boat as ForwardScan transmits and receives up to ten times faster for real-time updates.



ForwardScan Transducer **000-11674-001**  
 SonarHub™ Sounder Module **000-11142-001**

## ZG100 GPS

The ZG100 GPS Antenna provides high accuracy position, course and speed ten times every second ensuring maximum confidence in the displayed position. The ZG100 also includes a multi-axis heading sensor for data optimisation and backup heading data.



ZG100 GPS Antenna **000-11048-002**

## NMEA 2000® REMOTE BUTTON

An emergency Man-Over-Board (MOB) button, which will trigger alerts across the NMEA 2000 network.



NMEA 2000 Remote **000-15940-001**



*"My B&G kit delivered seamlessly in its first season. Now we rub along like old shipmates. My experience and its rock-solid data make good companions."*

*Tom Cunliffe*



# NEMESIS™ SAILING DISPLAY

This intelligent sailing data display offers unparalleled visibility from all angles and distances on-board.

With complete data customisation including a choice of easy to use multi-function templates, and automatic dashboards based on your point of sail. Whether racing or cruising, you will never be out of touch. Nemesis allows you to define how you see the data you want, and when, no matter what the conditions, providing an intuitive link between your trusted instrument network and the real world.



Nemesis 12  
000-15612-001



Nemesis 9  
000-15611-001



Flexible Mounting: Portrait or landscape



Apple Watch® control

## Key Features

- Pre-set dashboards or easy to use drag & drop editor for full customisation
- Wide choice of digital data displays including graphical gauges, SailSteer, tank levels, IP camera views, histograms and images
- Automatic Context modes: Upwind, Reaching, Downwind, Pre-start
- Adjustable data sizes, palettes and backlight for optimal viewing in all conditions
- Apple Watch® control
- Bright, crisp SolarMAX HD touch screen, with super-wide viewing angles, with or without polarised sunglasses
- Mount in portrait or landscape
- Connect multiple screens via the Nemesis Hub
- Ethernet and/or NMEA 2000®

OFFSHORE RACING

## COMPLETE CUSTOMISATION

This all-in-one customisable display can be mounted in either portrait or landscape. The easy to use drag & drop editor provides a wide choice of graphical gauges, SailSteer™, tank levels, digital data, IP camera views, histograms and images. With this, you have the freedom to select the data, visualisation and set size and position that you want; or you can simply choose from a choice of pre-selected built-in B&G dashboards and templates. Additional automatic context modes allow you to choose the sailing data you want to display based on your point of sail or sailing mode: Upwind, Reaching, Downwind or Pre-start.

## INTEGRATION & CONTROL

The use of commercial grade components, hours of testing and development by sailors in all conditions, combined with the most accurate sailing data available from your B&G network and instruments, will ensure you have complete trust in Nemesis. The reliability and accuracy of both the data and the display will give you the confidence you need to make the right decisions. Control your display on the touch screen or via an Apple Watch®.

## VISIBILITY & VERSATILITY

A bright SolarMAX™ HD touch screen, with super-wide viewing angles and the ability to view with polarised sunglasses from anywhere on-board. With adjustable data sizes, palettes and backlighting, this display offers optimal viewing in all conditions, whether on the mast or in the cockpit.

## HV DISPLAYS



HVision® bonded glass displays provide ultra-clear instrumentation with zero condensation risk. Designed to be installed on the mast in the sailor's line-of-sight, HV Displays show almost any information on the system.

When paired with H5000 Hercules™ or Performance CPUs, HV Displays will auto-switch data based on point of sail or pre-start status. Getting the crucial information in the right place at the right time.

- 10/10 HV Display
- 20/20 HV Display
- 30/30 HV Display
- 40/40 HV Display

- 000-11087-001
- 000-11088-001
- 000-11089-001
- 000-11090-001





# TRITON™ 2 INSTRUMENTS

Your course looks clearer with Triton 2. Triton 2 instruments and autopilots bring Grand Prix technology to coastal cruising and club racing sailors.

See the data you rely on: speed, depth, wind and more, in full colour on Triton 2's low-profile, intuitive displays.

Triton 2's low profile design will enhance any cockpit. Whether you mount the display at the helm, on the bulkhead or over the hatch, you'll always be able to see the data you need.

## Key Features

- Display wind, speed, depth, heading, GPS, AIS and more
- Large 4.1-inch colour display
- Brightest transfective LCD screen
- Configurable AIS screen
- Unique sailing features including SailSteer™ and WindPlot
- Easy to use, easy to install
- Low power consumption

COASTAL  
OFFSHORE

## TRITON 2 PACKS

It is easy to build your Triton 2 system with one of our starter packs that include network components and a choice of key instrument sensors.

### SPEED/DEPTH PACK

Includes: Triton 2 Display, DST-810 Speed/Depth/Temp Sensor, Micro-C Backbone kit.



Triton 2 Speed, Depth Pack **000-13298-002**

### SPEED/DEPTH/WIND PACKS

Includes: Triton 2 Display, WS series wind sensor, DST-810 Speed/Depth/Temp Sensor, Micro-C Backbone kit.



Triton 2 Speed, Depth, WS310 Wired Wind Pack **000-14955-002**

Triton 2 Speed, Depth, WS320 Wireless Wind Pack **000-14956-002**

## TRITON 2 SENSORS

### PRECISION™ 9 COMPASS

The Precision 9 provides accurate heading data for steering compass, autopilot, True Wind Direction calculation and stabilisation of radar displays.



Precision 9 Compass **000-12607-001**

### DST-810

A compact multisensor that offers depth, speed and temperature data. Directly connected to the network for easy installation.



DST-810 Triducer multisensor plastic hull fitting **000-15735-001**

DST-810 Triducer multisensor bronze hull fitting **000-15736-001**





# TRITON™ 2 AUTOPILOTS

Designed for sailors and tested in every one of the world’s oceans, a Triton 2 Pilot will help your boat hour after hour – better than most helmsmen.

Triton 2 Pilots feature intelligent sail steering, with compass and wind steering. Smart Manoeuvre controls allow you to tack at the touch of a button, and chartplotter integration enables waypoint and route navigation. The keypad offers precise control of all the autopilot functions, automatically displayed on a nearby Triton 2 display.

## BUILD YOUR B&G AUTOPILOT SYSTEM

### 1. Choose your display

Triton™ 2 Display  
Display and Controller



OR

Vulcan/Zeus S  
Display and Controller



Zeus 3S (Pilot control is integrated)



### 2. Choose your Triton 2 Pack

Select a Triton 2 Pilot Pack to match your boat (includes computer, compass, rudder feedback unit and network starter kit).

#### Triton 2 Pilot Computer/Compass/Rudder Feedback Unit



Triton 2 Pilot Controller

**000-13296-001**

Triton 2 Pilot Controller & Display Pack

**000-13561-001**

NAC-2 Core Pack

**000-13335-001**

NAC-3 Core Pack

**000-13336-001**

### 3. Choose a drive unit

B&G Pilots are compatible with a number of third-party drive units in addition to B&G models. Consult your B&G specialist.

#### Drive units



RAM T0 - 12v (26ft-35ft boats\*)

**000-13902-001**

RAM T1 - 12v (30ft - 40ft boats\*)

**RAM-T1-12V**

RAM T2 - 12v (40ft - 50ft boats\*)

**RAM-T2-12V**

RAM T2 - 24v (40ft - 50ft boats\*)

**RAM-T2-24V**

RAM T3 - 12v (50ft+ boats\*)

**000-13788-001**


RAM T3 - 24v (50ft+ boats\*)

**RAM-T3-24V**

Further drive units to suit a range of applications are available, see [www.bandg.com](http://www.bandg.com)

\*Consult your dealer to confirm the drive suitability for your boat.





*"B&G electronics provide me with a vital sixth sense, which I trust. The reliability and accuracy is second to none and is critical in these harsh environments."*

*Andreas B. Heide –  
Professional Expedition Sailor,  
Arctic Norway*

# TRITON™ EDGE™ SAILING PROCESSOR

Triton Edge is the brains behind the ultimate cruiser racer sailing system. Its ultra-fast processor delivers an enhanced suite of data to your displays, improving the accuracy of your sailing information.

Latest powerful micro processor provides all core instrument calculations.

Enhanced feature set for serious cruising yachts.

B&G App Integration.

Web interface provides easy access to system configuration, automatically displayed on a nearby Triton 2 display.

## Key Features

- Web interface provides easy access to system configuration and control
- Record all your sailing data to the cloud
- Review your sailing data using the B&G companion app
- Backup, restore, and export sailing data
- Ethernet interface
- Dual Wifi – Internet & Hotspot
- NMEA 2000® compliant interface
- 12/24V power

OFFSHORE  
RACING



Triton™ Edge™  
**000-15134-001**

## EXPANDED, ENHANCED DATA

Get access to more data than ever. Get improved calibration and correction data for wind, boat speed, heel/trim and more, plus access advanced calculations for features such as StartLine, providing more accurate information to both the user and the system for improved performance.

## SUPERIOR CONNECTIVITY

Take better control of your sailing data with web-browser support for easy set-up and commissioning. Plus, integration with the B&G® App lets users review and replay sailing data from anywhere.





# WS300 AND WS700 WIND SENSORS

A range of high precision wind sensors, designed for cruising, club and performance racing.

## WS700 SERIES

The WS700 series provides the ultimate wind sensor for performance sailing, providing the most accurate wind angle and speed data. The new one-piece vane design gives superb aerodynamics and stability, as a result of over 200,000 hours of combined design and wind tunnel testing.



WS710 Wind Pack  
**000-14384-001**

WS720 Wind Pack  
**000-14385-001**

WS730 Wind Pack  
**000-14386-001**

WS710 Vertical Wind Sensor  
**000-14392-001**

WS720 Vertical Wind Sensor  
**000-14393-001**

WS730 Vertical Wind Sensor  
**000-14394-001**

WS740S Vertical Wind Sensor  
**000-14395-001**

### WS700 Key Features

- High precision and accuracy
- High performance aerodynamic design
- Ocean Race proven
- Straightforward installation
- Carbon fibre spar sizes from 0.8 – 1.8m
- 4 cable options from 20 to 80m

OFFSHORE  
RACING

## WS310 WIND SENSOR

Designed for cruising and club racing sailors. WS310 offers high performance and outstanding data accuracy, with improved aerodynamics. Suitable for all yachts, it comes with 20, 35, 50 or 80m cables.

## WS320 WIRELESS WIND SENSOR

Installation is no longer a challenge. This wireless sensor is lightweight and eliminates the need to run wires through the mast with no loss in accuracy. WS320 outputs wind at a super smooth five times per second and its smart rechargeable power management will guarantee reliable data, regardless of the weather.

### WS310 Key Features

- High precision and accuracy
- Wind tunnel validated aerodynamics
- 4 cable options from 20 to 80m
- Connects to instrument network via interface

COASTAL  
OFFSHORE  
RACING

### WS320 Key Features

- Easy installation
- Wireless communication
- Smart power management
- High precision and accuracy
- Wind tunnel validated aerodynamics
- Connects to NMEA 2000® via remote interface

COASTAL  
OFFSHORE  
RACING





*"B&G provide the same accuracy, reliability and performance in all our wind sensors so whether you are a SailGP or Americas Cup team or cruising your local waters, you can trust in your B&G kit, no matter what."*



WS320 Wireless Wind Pack with interface  
**000-14383-001**



WS310 Wind Sensor Pack, 20m cable, interface  
**000-14382-001**

# H5000 INSTRUMENTS

B&G’s H5000 instrument and autopilot system delivers sailing-specific features and powerful race-proven technology with an ultra-fast CPU, convenient web-style interface, full colour displays and a dedicated autopilot.

## H5000 DISPLAYS

The 5-inch, sunlight viewable, graphic colour screen with a highly intuitive user interface is packed with sailing features including SailSteer™, Start Line, AIS display and Pilot status. The bonded glass display gives zero condensation and enhanced contrast.

### Graphic Display Features

- Start Line
- SailSteer™
- AIS repeater
- Pilot status
- WindPlot
- Quick, context-based menus
- Bright colour display

OFFSHORE  
RACING



H5000 Graphic Display  
000-11542-001

## INSTRUMENT CPU



The H5000 system is powered by a smart Central Processing Unit (CPU) which runs three levels of software, Hydra™, Hercules™ and Performance to match your sailing requirements.

## H5000 CPU FUNCTION LEVELS

FUNCTIONS	Hydra	Hercules	Performance
Performance Wind Filtering	•	•	•
3D Motion corrected wind support		•	•
Ground Wind Speed and Direction			•
SOG as Boat Speed option	•	•	•
Dynamic Boat Speed Damping		•	•
Polar Table and functions		•	•
HV Display Context Switching mode		•	•
Start Line proximity, with Bow Positioning	•	•	•
16 Custom User Channels	•	•	•
<b>CALIBRATION</b>			
AutoCal routines, including True Wind correction	•	•	•
Advanced True Wind Speed correction		•	•
Boat Speed Linearity/Heel correction		•	•
Cubic Spline interpolation	•	•	•
<b>INTERFACING</b>			
Selectable NMEA0183 Input/Output	•	•	•
H5000 Webserver browser based control	•	•	•
H-Link Communications		•	•
Websockets v2	•	•	•
Nemesis™ Ethernet	•	•	•
<b>SENSOR SUPPORT</b>			
Dual Boat Speed input	•	•	•
Dual Wind Sensors (switching on wind angle)			•
Rotating Mast support for Wind Calculation	•	•	•
Port & Starboard Rudder inputs, with Toe-In			•
Advanced Linear channel types		Set A	Set A+B
Dual Depth sensors	•	•	•
Network Loadcells	•	•	•

## ANALOGUE DISPLAYS

B&G’s Analogue displays provide a clear view of key data types in a classic display, meeting the aesthetic demands of classic yachts and providing instant understanding of important data, like Wind Angle, at a glance.



Analogue Displays – all models

See [www.bandg.com](http://www.bandg.com)





*“All this technology is essential today to be able to control these machines which can reach average speeds of more than 25 knots when the conditions are right.”*

*Thomas Ruyant – LinkedOut  
Vendée Globe 2020*

### 3D MOTION

Wind measurement is affected by the pitching and rolling motion of the yacht, which distorts the wind measurement at the top of the mast. The solution is 3D Motion correction – H5000 takes data from multiple sensors including high-specification rate-gyros to correct for induced wind, providing the best wind solution available in an instrument system.



### H5000 BROWSER INTERFACE

Browser-based configuration of the H5000 system enables advanced calibration, set-up and diagnostics without the hassle of negotiating a complex and unfamiliar menu system. The powerful web-style interface can be accessed via PC, tablet or smartphone (tablet/smartphone requires Wi-Fi interface).



### STARTLINE

H5000's Start Line feature provides high-resolution data for distance to line, distance to line ends, line bias and the distance gained by starting at the favoured end. H5000 Start Line uses BowPosition, calculating the position of the yacht's bow ten times every second. For the ultimate in starting performance, interface H5000 with a Zeus system with scaled StartLine view.



### ADVANCED CALIBRATION

H5000 offers the ultimate in high resolution sensor input, the best processing techniques and optimum system calibration including AutoCal routines, with corrections for almost every function for the most precise data.



# SENSORS

## HEADING SENSORS

The Precision™ 9 Compass supplies heading and rate-of-turn information to B&G instrument, autopilot, radar and navigation systems. Incorporating a nine-axis array of solid-state motion and orientation sensors, the Precision-9 also provides accurate heel, trim and heave data to compatible equipment via its NMEA 2000® interface.



Precision 9 Compass **000-12607-001**

## WIND SENSORS

High performance light-weight wind speed and angle sensors, built to withstand the rigors of offshore racing and high-latitude cruising. B&G's wind sensors are accurate and stable across all wind conditions – providing confidence in the data, whether for a tactical windshift call or autopilot steering performance.



Vertical Wind Sensor Pack 810mm **000-14384-001**

Vertical Wind Sensor Pack 1050mm **000-14385-001**

Vertical Wind Sensor Pack 1450mm **000-14386-001**

Further wind sensor models are available, see [www.bandg.com](http://www.bandg.com)

## DEPTH SENSORS

B&G offer a selection of sensors to provide the all-important depth data. Select a DT800 sensor to partner a dedicated speed sensor, or select the combined DST-810 depth/speed sensor. Both options are NMEA 2000® compatible and include water temperature sensors.



DT800 NMEA 2000® Depth **000-11738-001**

DST-810 Triducer multisensor plastic hull fitting **000-15735-001**

DST-810 Triducer multisensor bronze hull fitting **000-15736-001**

## EXPANSION MODULES

H5000 Expansion modules provide additional interfacing capacity. Serial Expansion for interfacing additional GPS units, Gyro compasses and other NMEA 0183 devices. Analogue Expansion enables additional inputs for 0-5V sensors including wind, mast angle and loadcells.



H5000 Serial Expansion **000-11726-001**

H5000 Analogue Expansion **000-11725-001**

## SPEED SENSORS

Accurate boat speed is key to any instrument system, ensuring calculated functions including True Wind are as precise as possible. Options include dedicated speed sensors, for optimum performance, and combined Depth/Speed sensors for single through-hull convenience.



H5000 Speed Sensor, Plastic housing **SEN-SPD-HP**

H5000 Speed Sensor, Plastic Flush housing **SEN-SPD-HPF**

H5000 Speed Sensor, Bronze housing **SEN-SPD-HM**

DST-810 Triducer multisensor plastic hull fitting **000-15735-001**

## RUDDER SENSORS

Rudder angle is imperative for both autopilot performance and race yacht performance optimization. B&G's sensors provide highly accurate rudder data ten times per second.



RF25N Rudder sensor **000-10756-001**

RF300 Rudder sensor **20193744**



# H5000 PILOT

## Advanced Sailing Features.

The H5000 Pilot isn't the same as other autopilots, its expert systems constantly monitor heading, wind, sea-state, heel angle and other variables to react to changes in conditions immediately, providing performance and safety in equal measure.

**Recovery Mode** recognises sudden course deviations caused by out of pattern waves and ensures that the yacht deviates less from the target course and returns to course quicker.

**Gust Response** takes pre-emptive action based on incoming H5000 or WTP3 instrument data to hold a more stable course in changeable wind conditions.

**High-Wind Response** naturally bears the yacht away if wind increases while reaching to keep the boat flatter and driving faster.

B&G's H5000 Pilot contains failsafe systems including secondary data sources and user configurable hard-limits to provide safety features to match its performance.

### PILOT KEYPAD

Provides straightforward autopilot control and system setup from its dedicated keypad. As the primary autopilot controller, or as a second station to a Zeus® chartplotter, the Pilot Keypad provides assured control and feedback.



H5000 Pilot Keypad

**000-11544-001**

### PILOT CPU

The record-breaking and Vendée Globe winning H5000 Pilot features dedicated sailing algorithms and steering modes – Gust Response, Recovery and High-Wind Response. It has been proven in the toughest of conditions and the most testing environments and is ideal for short-handed racing.



H5000 Pilot CPU

**000-11554-001**

#### H5000 Pilot Keypad Key Features

- Dedicated pilot control
- Full pilot setup access
- Glass bonded, monochrome display
- Straightforward interface

OFFSHORE  
RACING

#### H5000 Pilot CPU Key Features

- Steer to compass, wind or waypoint
- Apparent and true wind steering
- Expert systems including gust and high-wind response
- Auto response switching and recovery mode

OFFSHORE  
RACING

### WIRELESS REMOTE

Wirelessly control your autopilot from anywhere on-board with this Bluetooth® Wireless Pilot Controller. Worn on the wrist or a lanyard, the WR10 works with H5000 and Triton™ 2 Pilot systems, up to 30m from the waterproof base station.



WR10 Remote Controller & BT-1 Base Station

**000-12316-001**

WR10 Remote Controller - additional remote

**000-12358-001**

# WTP3

WTP3 is the ultimate Grand Prix instrument system.

The powerful multi-processor CPU links to distributed data acquisition modules via 3 independent CAN networks, providing vast data collection and calculation possibilities. The data is processed in the CPU that transmits serial data for output to displays via modules, communicates with PC software via Ethernet and operates an on-board datalogger for post-sail data analysis. WTP3 systems are installed by certified professionals and fully supported throughout commissioning and use.

## The WTP3 meets three principle objectives

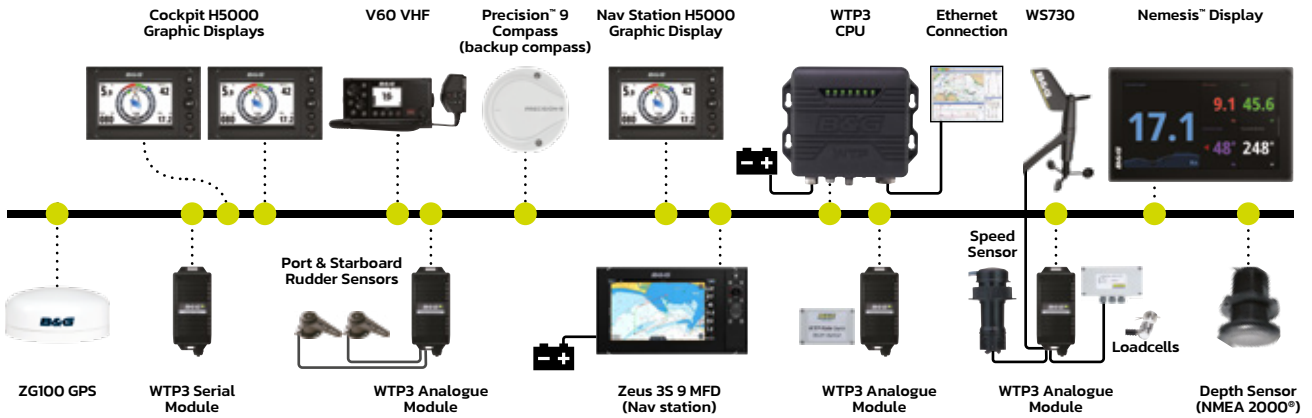
RACING

- Flexibility and reliability for the professional yacht navigator
- Unmatched data accuracy with powerful calibration options and 3D Motion correction
- Super-fast data calculation and display

Contact your B&G Grand Prix specialist for more information.

## THE ULTIMATE GRAND PRIX ELECTRONICS SYSTEM

WTP3 is at the heart of leading Grand Prix racing yachts – including every Ocean Race yacht and many winners of the Vendée Globe. Accurate, repeatable data enables the navigator and crew to make race winning decisions with confidence.



### WTP3 CPU SYSTEM PACK



WTP3 provides data acquisition while eliminating the effects of boat motion for accuracy and flexibility.

WTP3 CPU

000-10313-001

### WTP3 ANALOGUE MODULE

Delivers high-precision analogue data acquisition, and includes a range of input and output options to support a wide variety of sensors.

WTP3 Analogue Module



000-10316-001

### WTP3 SERIAL MODULE

Provides serial data acquisition, and includes a range of input and output options to support a wide variety of sensors.

WTP3 Serial Module



000-10308-001







# HALO® RADAR

See near and far with one compact dome.

Ready whenever you are, HALO 24, HALO 20+ and HALO 20 radars wake instantly from low-power standby mode, delivering high-speed radar coverage in seconds. New Power Save mode (HALO 20+/24 only.) allows you to set radar to wake up and sweep at certain intervals rather than being on all the time in order to save on power consumption.

## HALO 24 AND HALO 20+ RADAR

HALO 24 and 20+ deliver an almost real-time view, with 60 RPM for the ultimate in collision avoidance. Identify hazards in an instant with VelocityTrack™ and enjoy simultaneous short and long-range coverage—up to 48 nautical miles—from a lightweight compact 24 and 20-inch dome.

HALO 24

**000-14538-001**

HALO 20+

**000-14539-001**

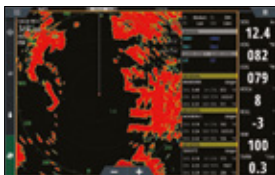


## HALO 20 RADAR

A cost-effective solution for sailors to increase situational awareness and collision avoidance, detecting collision hazards and other targets nearby and up to 24 nautical miles away. With its small footprint, low profile and light weight, HALO 20 is the perfect radar solution for smaller sailboats.

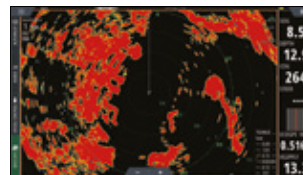
HALO 20

**000-14540-001**



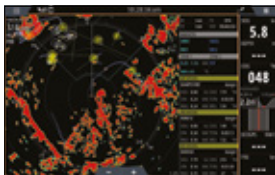
### THE ULTIMATE VIEW FOR COLLISION AVOIDANCE

Get ultra-fast updates with a 360 degree sweep every second, thanks to its industry-first 60 RPM rotation at ranges up to 15 nautical miles. Available on the HALO 24 and HALO 20+.



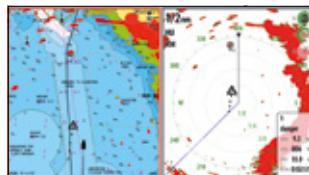
### VELOCITYTRACK™ DOPPLER TECHNOLOGY BUILT-IN

VelocityTrack technology provides instant visual feedback on whether targets are approaching or moving away, by using on-screen colour coding. Available on the HALO 24 and HALO 20+.



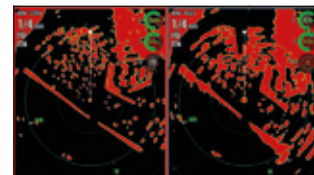
### RADAR ZONETRACK™

Track up to 10 targets simultaneously with MARPA tracking or with HALO 20+/24 use ZoneTrack, a new automatic radar tracking feature, which can acquire and track up to 50 radar targets within user-specified zones.



### CHART OVERLAY

Overlay the radar image on the chart to immediately flag up any uncharted obstructions and vessels.



### DUAL RANGE MODE

Keep an eye on far away weather cells, while watching for collision dangers up close.



*"The HALO radar is  
awesome, it detects  
small objects even in  
sea state."*

*Boris Herrmann –  
Team Malizia*





# COMMUNICATIONS & CAMERAS

Stay connected with B&G's range of VHF and AIS products.

A VHF radio is a must have communication device for safety at sea and one of the most important items onboard your boat. Whether you're looking for a fixed mount system at the chart table or a flexible handheld offering whilst on the rail, B&G offer a choice of sailing VHF radios. For a fully integrated navigation and safety system, add AIS to your marine electronics system.

## V100 & V100-B VHF

Stay safer on the water with the latest multi-station V100 and V100-B VHF marine radios from B&G. Stay connected from anywhere on board with up to 8 handsets (4 wired and 4 wireless) and 4 external speakers. Each system is comprised of a VHF Radio Black box, a handset and a speaker. The Black box is available in two formats: NRS-1 and the NRS-2 with integrated Class-B AIS. Add additional speakers or wireless handsets with charging stations as you need, for the same freedom of a handheld VHF. Use as an intercom for easy communication with your crew on board, at the touch of a button. The V100 Series multi-system VHF radio has been developed to allow wider integration possibilities through NMEA 2000® and 0183, while featuring improved user interfaces and design styles aligned to the new displays of B&G.



V100 Packaged System with Handset and Speaker

**000-15644-001**

V100-B Packaged System with Handset, Speaker and GPS-500

**000-15793-001**

H100 KIT - Handset & Speaker Pack

**000-15648-001**

CR100 - Handset Cradle for H100

**000-15653-001**

CH100-20 - H100 Handset Cable 20 Meter

**000-15656-001**

CW100-6 - Extension Cable & Bracket for Wireless Antenna

**000-15657-001**

## H60 HANDSET

The H60 remote handset adds wireless communications to the V60 VHF, duplicating the display and key controls to the handset and providing an on-board intercom system, for flexible communications away from the chart table.



H60 Wireless Handset

**000-14476-001**

## V60 & V60-B VHF

Stay safer on the water with V60 VHF marine radios with built-in GPS and full Class-B AIS receiver, and in the case of the V60-B an integrated Class-B AIS transceiver. See and be seen by nearby AIS-equipped vessels. This low-profile design radio grants flexible mounting options and supports up to two optional wireless handsets.



V60 VHF Radio

**000-14471-001**

V60-B VHF Radio

**000-14474-001**

## V20S VHF

The V20S is perfect as a stand-alone VHF system in the cockpit or at the navigation station. The sleek low profile design, clear bright display, and easy button access are combined with key features including all international channels, Class D DSC Approved and NMEA 2000® compatible.



V20S VHF Radio

**000-14492-001**

## IP CAM-1 MARINE VIDEO CAMERA

This easy to install marine camera, with rugged 316 stainless steel housing, offers improved vessel awareness and peace of mind that comes with monitoring a location on or around your boat – day or night. Compatible with B&G Zeus® 3, Zeus 3S and Zeus 3S Glass Helm Chartplotters and Multifunction Displays.



Stainless Steel, Marine IP Camera with POE and 12V Injection

**000-15876-001**





# CONNECTED VESSEL

We want you to spend more time sailing and less time planning or configuring your boat's systems. Reliability and precision are in our DNA, connectivity is the future.

## DISCOVER THE B&G APP – THE PERFECT COMPANION FOR ANY SAILOR

- Plan your trip in advance
- Sync with your B&G chartplotter
- Navigate with the latest C-MAP® charts
- Review your sailing data.

The B&G App provides all the tools you need to plan your sailing trips in advance, then simply transfer to your B&G chartplotter when you step aboard and sail away.

Useful data and sailing information is shared in the app for review after any race or cruise, to help you win your next race or plan your next trip.

With the latest C-MAP charts, detailed waypoints, routes and tracks, Autorouting™, thousands Points of Interest and Weather Overlays, the B&G app is all you will ever need before, during and after sailing.



Scan to download



## INTEGRATION

Smart integration makes B&G displays even more powerful.

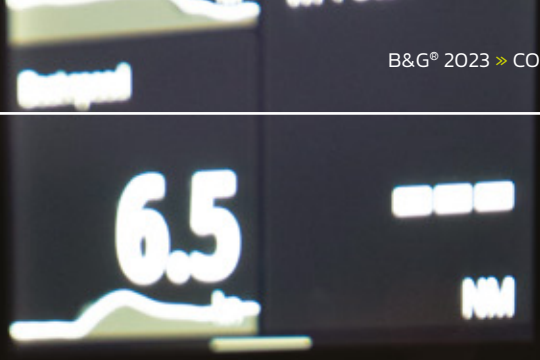
When taking control of your yacht, integration is everything. The ability to monitor and control all your on-board components in one place is a game-changer, making your time on the water easier and more enjoyable.

We start with the full suite of B&G electronics – integrating sensors, radar, displays, autopilot, and more

– and then go beyond, working closely with the world's leading third-party technical suppliers to become a pioneer in connectivity.

From digital switching to vessel-wide monitoring, our list of integration partners is always growing, making our systems smarter by the day.





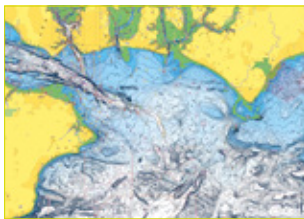
# CHARTS AND WEATHER



## CARTOGRAPHY

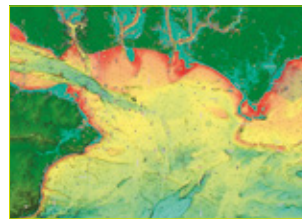
Make the most of your time on the water with the best charts. For an easier, safer sailing experience, B&G offers the widest range of charting options.

As well as being packed full of award-winning sailing features, all our chartplotters are compatible with leading cartography providers, including C-MAP, ensuring you always have the latest chart data at your fingertips.



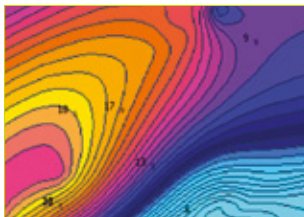
### DISCOVER™

DISCOVER all you need to make the most of your time on the water. Full-featured Vector Charts with High-Res Bathymetry, including integrated Genesis® social data, subscription-free Easy Routing™ and Custom Depth Shading. Includes 12 months of free online updates.



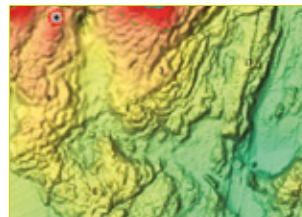
### REVEAL™

REVEAL charts bring you the very best of C-MAP, including all features found in DISCOVER and more – includes game-changing Shaded Relief, bringing the world around and beneath you to life in a completely new way.



### DISCOVER™ X

C-MAP DISCOVER X offers a fresh, dynamic experience. With the latest vector data, best-in-class Day and Night modes and the most detailed C-MAP High-Res Bathymetry, with an all-new Map Inspector Tool. *Compatible with ZEUS® S.*



### REVEAL™ X

REVEAL X charts bring you the very best of C-MAP, with every feature you would find in DISCOVER X plus added layers – including Shaded Relief and Satellite Overlay, for enhanced situational awareness. *Compatible with ZEUS® S.*

\*Only available on certain charts. Copyright Acknowledgement: <https://www.c-map.com/legal/copyright-acknowledgement/>. Notices and Warnings: <https://www.c-map.com/legal/notices-and-warnings/>

## WEATHER



PredictWind® is recognised as the world leader in high resolution wind forecasting for sailing, with their own global weather forecast models.

PredictWind® was launched in 2008 in a web-based format by America's Cup weather strategist Jon Bilger and a team of technical experts. The aim of PredictWind® is to be the world leader in supplying weather forecasting tools for every level of mariner who requires accurate weather forecasts.



PredictWind® weather forecast services are integrated on B&G's Zeus® and Vulcan™ products and are available via a Wi-Fi connection upon registration with PredictWind® (premium features require a subscription).

[www.predictwind.com](http://www.predictwind.com)





## WORLDWIDE SUPPORT

Many boats race or cruise a long way from home waters, when you purchase B&G equipment you can be confident that you will receive a high level of support wherever you are in the world.

### *B&G SERVICE*

We are committed to offer you the best service. For this reason, in addition to our comprehensive warranty, our dedicated support teams offer B&G customers preferential out-of-warranty terms for up to five years after purchase. Extended warranties are also available for absolute peace-of-mind.




Contact consumer support directly from your chartplotter. The NASA integrated diagnostics tool is now available in all B&G multifunction displays.

# B&G<sup>®</sup>

[www.bandg.com](http://www.bandg.com)

 [facebook.com/bandgsailing](https://facebook.com/bandgsailing)

 [youtube.com/bandgsailing](https://youtube.com/bandgsailing)

 [@bandgsailing](https://instagram.com/bandgsailing)

FSC Details  
(added by printers)

© Navico 2023. All Trademarks are property of their respective owners. Products, features and specifications are the most recent available and are subject to change without notice.  
No liability can be accepted for errors or omissions in this document.

\*Reg. U.S. Pat. & Tm. Off. and ™ common law marks. Visit [www.navico.com/intellectual-property](http://www.navico.com/intellectual-property) to review the global trademark rights for Navico Holding AS.