

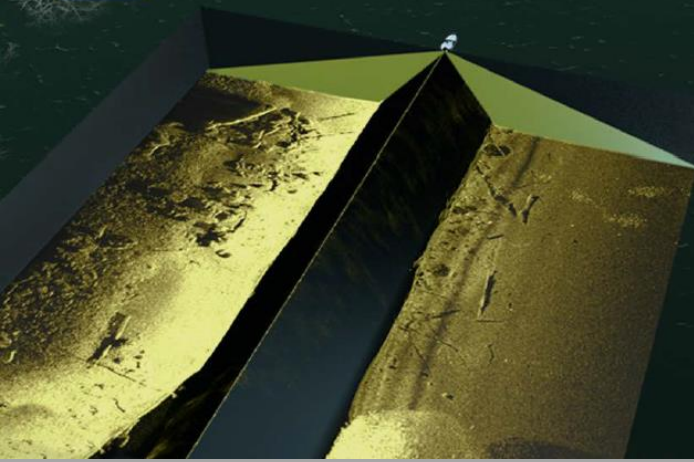
# ELITE Ti<sup>2</sup>





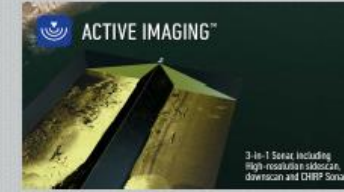
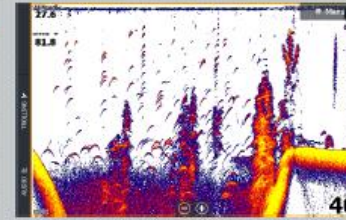
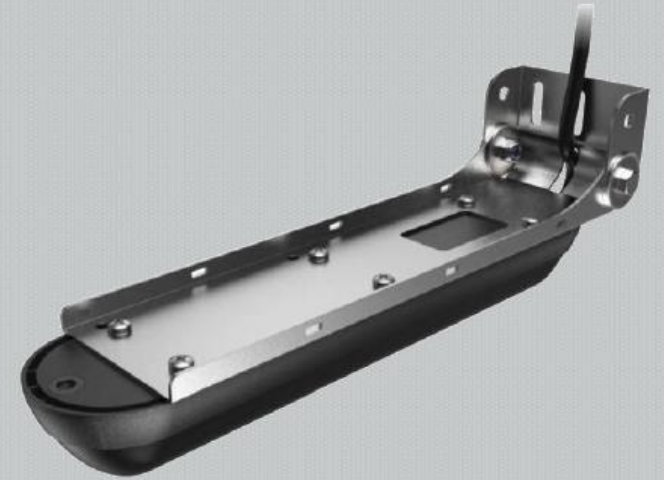
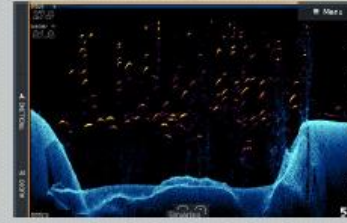


# ACTIVE IMAGING™



3-in-1 Sonar, including High-resolution sidescan, downscan and CHIRP Sonar

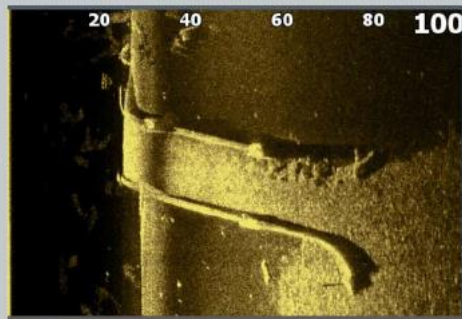
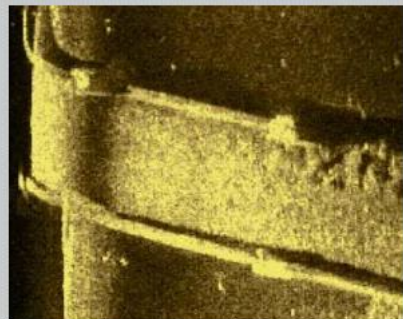
# ACTIVE IMAGING 3-IN-1 TRANSDUCER



## ACTIVE IMAGING

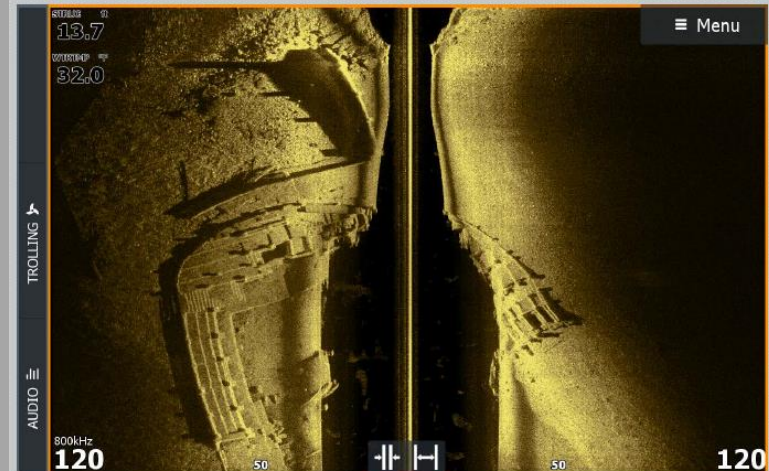
Active Imaging Sonar rethinks what an angler can expect from an Imaging sonar

- Do you want the best image quality of structure, fish, bottom composition?
- Do you want to have an imaging sonar that can see areas you should be fishing, and not just the areas under or near your boat?
- Do you want simplicity in use, and not have to change frequencies while fishing?
- Active Imaging sonar gives you all of the above:
  - 800 kHz beats those megahertz competitors in both detail and range
  - Optional 455 kHz for those who need to see even further



Zero Compromise Imaging Sonar

## ACTIVE IMAGING



What am I looking at here?

Monte Ne Amphitheater – Beaver Lake Arkansas  
[https://sonar.kleinclauson.com/links/Monte\\_Ne](https://sonar.kleinclauson.com/links/Monte_Ne)

Photo Courtesy of @fishin Monty Rogers, Arkansas



Photo Courtesy of @fishin Monty Rogers, Arkansas

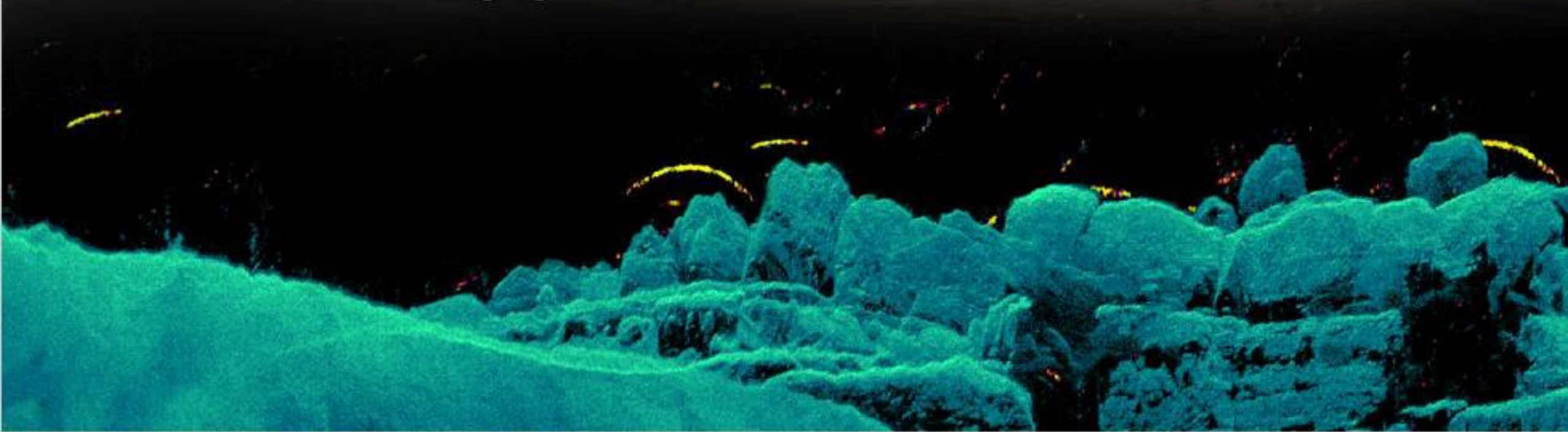






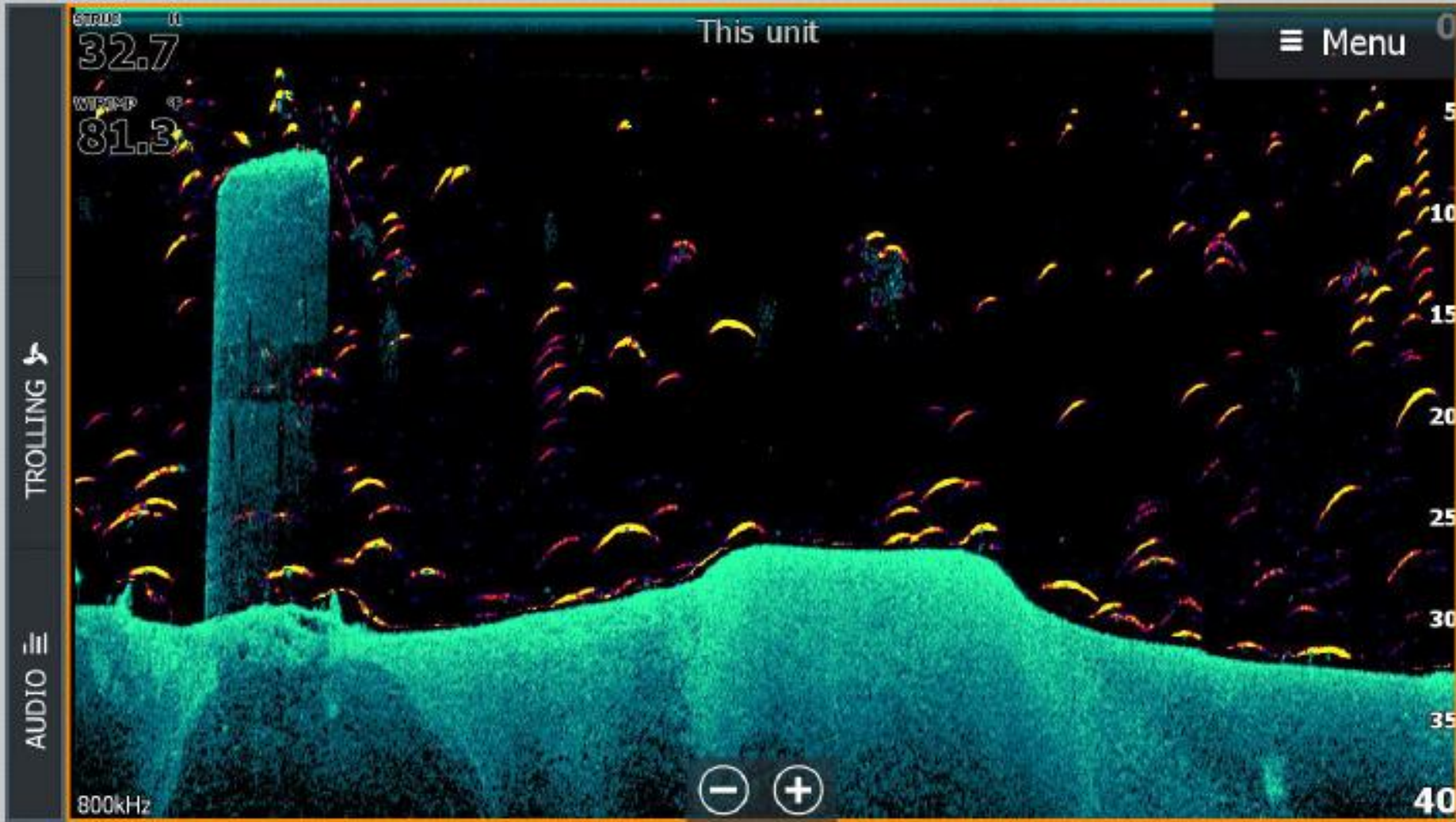
# FISHREVEAL™

Makes fishing easier, bringing together – on one screen – the best of Lowrance® CHIRP sonar and DownScan Imaging®.





# FISHREVEAL

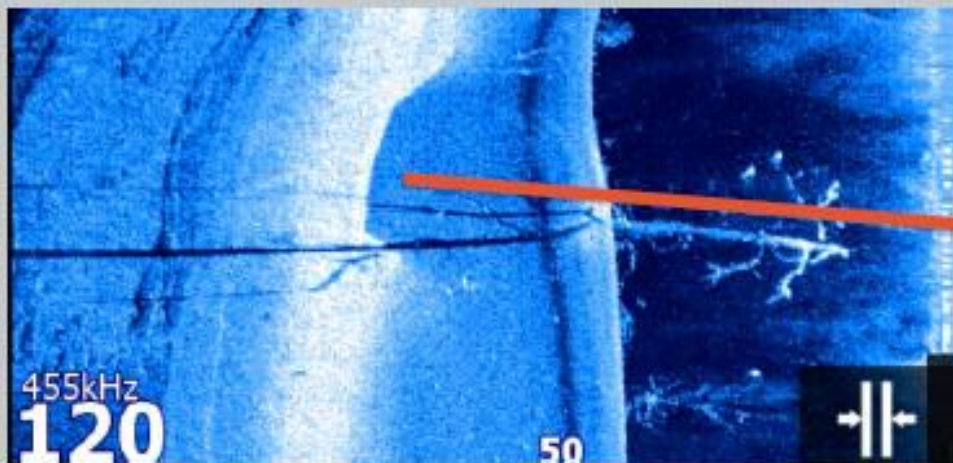
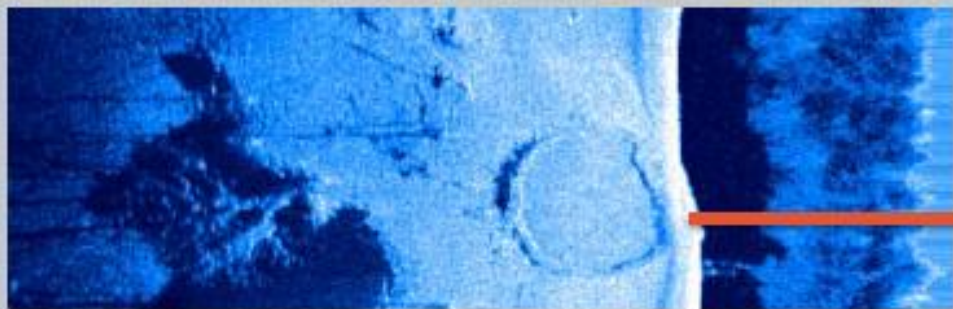


Active Imaging improvements also apply to DownScan

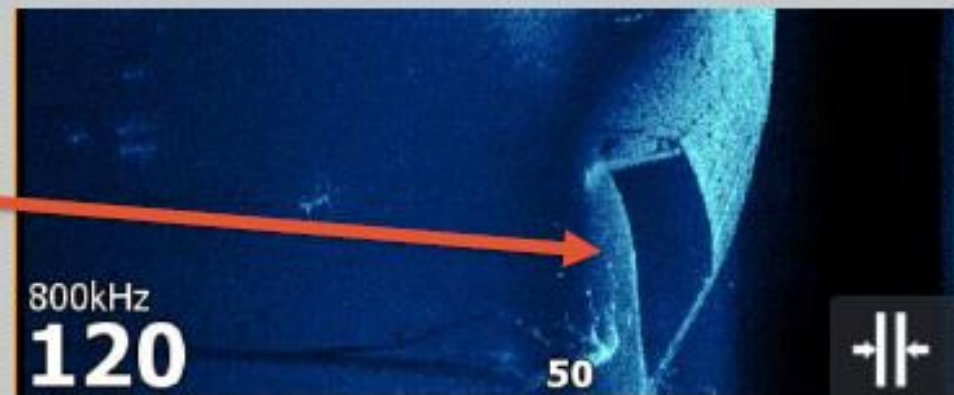
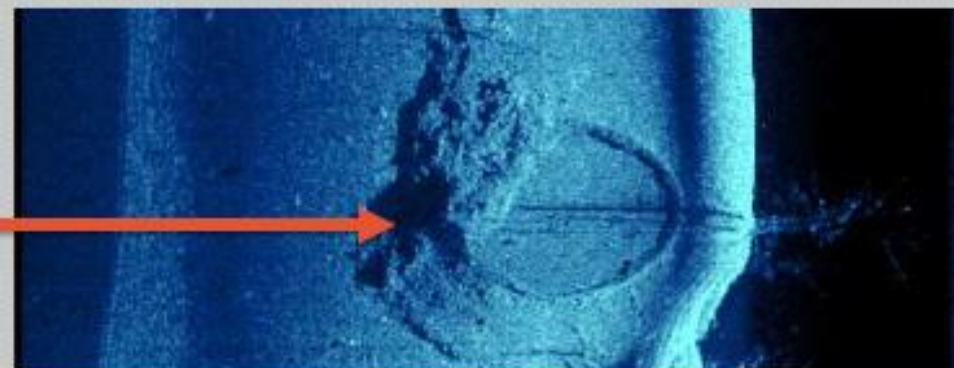
Active Imaging DownScan works great with FishReveal CHIRP sonar showing clear easy to see structure and highlighted fish arches on that structure or other bait fish



# ACTIVE IMAGING ELITE TI VS. ELITE TI<sup>2</sup>



Elite Ti



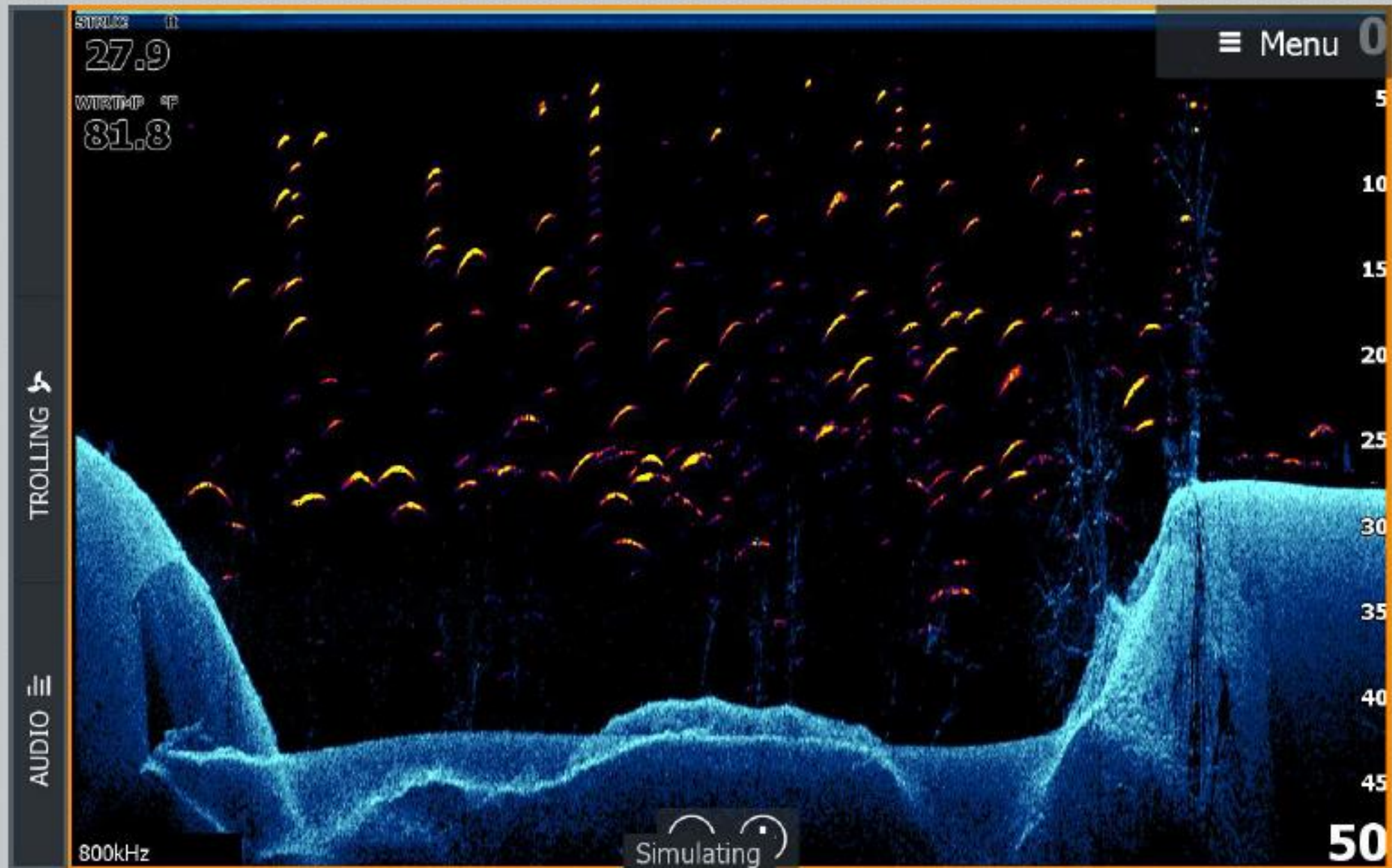
Elite Ti<sup>2</sup>

These units are showing the same place at the "same" color palette. Notice that the Elite Ti<sup>2</sup> has much better target contrast and clarity.

Note: To show the differences between the old Ti technology and the new Ti<sup>2</sup> technology, these images are not from the same sonar log, and are not taken from the same angle, however these images are taken of the same pieces of structure.



# FISHREVEAL



# Technical Specifications

	Elite-7 Ti <sup>2</sup>	Elite-9 Ti <sup>2</sup>	Elite-12 Ti <sup>2</sup>
<b><u>DISPLAY</u></b>			
Resolution	800 W x 480 H	800 W x 480 H	1280 W x 800 H
Brightness	> 1200 nits		
Touch Screen	Yes – Single Touch		
Viewing Angle	50° top, 60° bottom, 70° left/ right		
<b><u>ELECTRICAL</u></b>			
Supply Voltage	12 V DC (10 - 17 V DC min - max)		
Power Consumption - MAX	12 W (0.9 A at 13.8 V DC)	12 W (0.9 A at 13.8 V DC)	22 W (1.6 A at 13.8 V DC)
<b><u>Environmental</u></b>			
Operating Temp Range	-15°C to +55°C (5°F to 131°F)		
Storage Temp Range	-20°C to +60°C (4°F to 140°F)		
Waterproof Rating	IPX6 and IPX7		
Humidity	IEC 60945 Damp heat 66°C (150°F) at 95% relative (48 hr)		
Shock and Vibration	100 000 cycles of 20 G		

# Technical Specifications

	Elite-7 Ti <sup>2</sup>	Elite-9 Ti <sup>2</sup>	Elite-12 Ti <sup>2</sup>
<b><u>Connections</u></b>			
NMEA 2000	1 port (Micro-C)		
NMEA 0183	1 port (With Optional Power/NMEA Cable)		
Ethernet	No Ethernet – Wireless Networking		
Card Slots	1 microSD		
Wireless	Built-in 802.11 b/g/n		
Bluetooth	Bluetooth 4.0 with support for Bluetooth Classic		



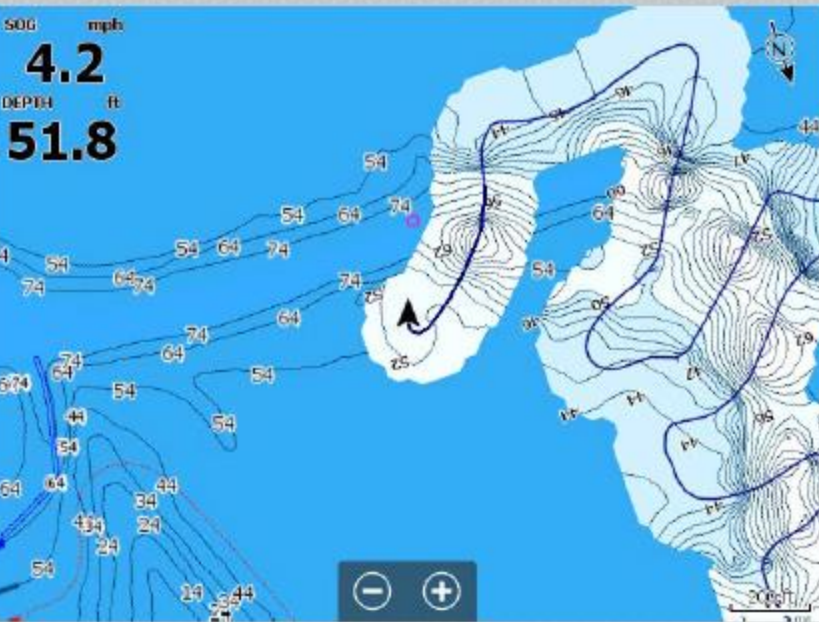


# C-MAP GENESIS LIVE

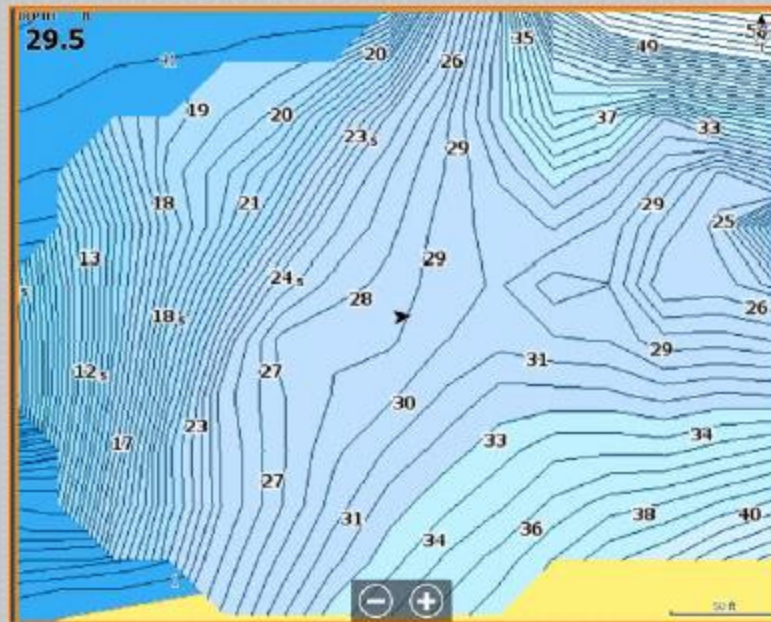
Map your favorite fishing spot or an entire lake –  
in realtime – on your Elite Ti<sup>2</sup> display



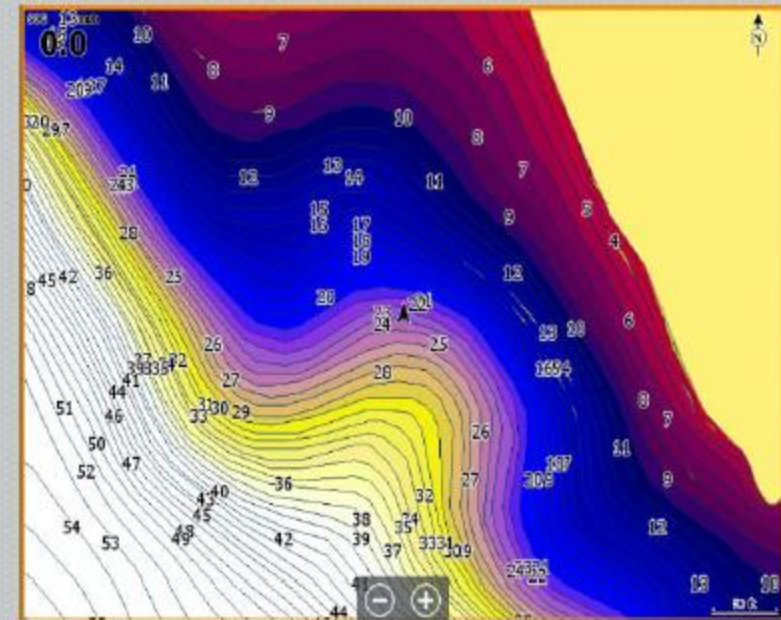
# C-MAP GENESIS LIVE



Genesis Live



1/2 Foot Contours



Custom Depth Shading

Real-time mapping feature with up to 1/2 foot contours and custom depth shading



# C-MAP GENESIS LIVE

Genesis live is a real-time mapping feature where the unit creates an overlay of depth contour mapping based on live depth soundings.

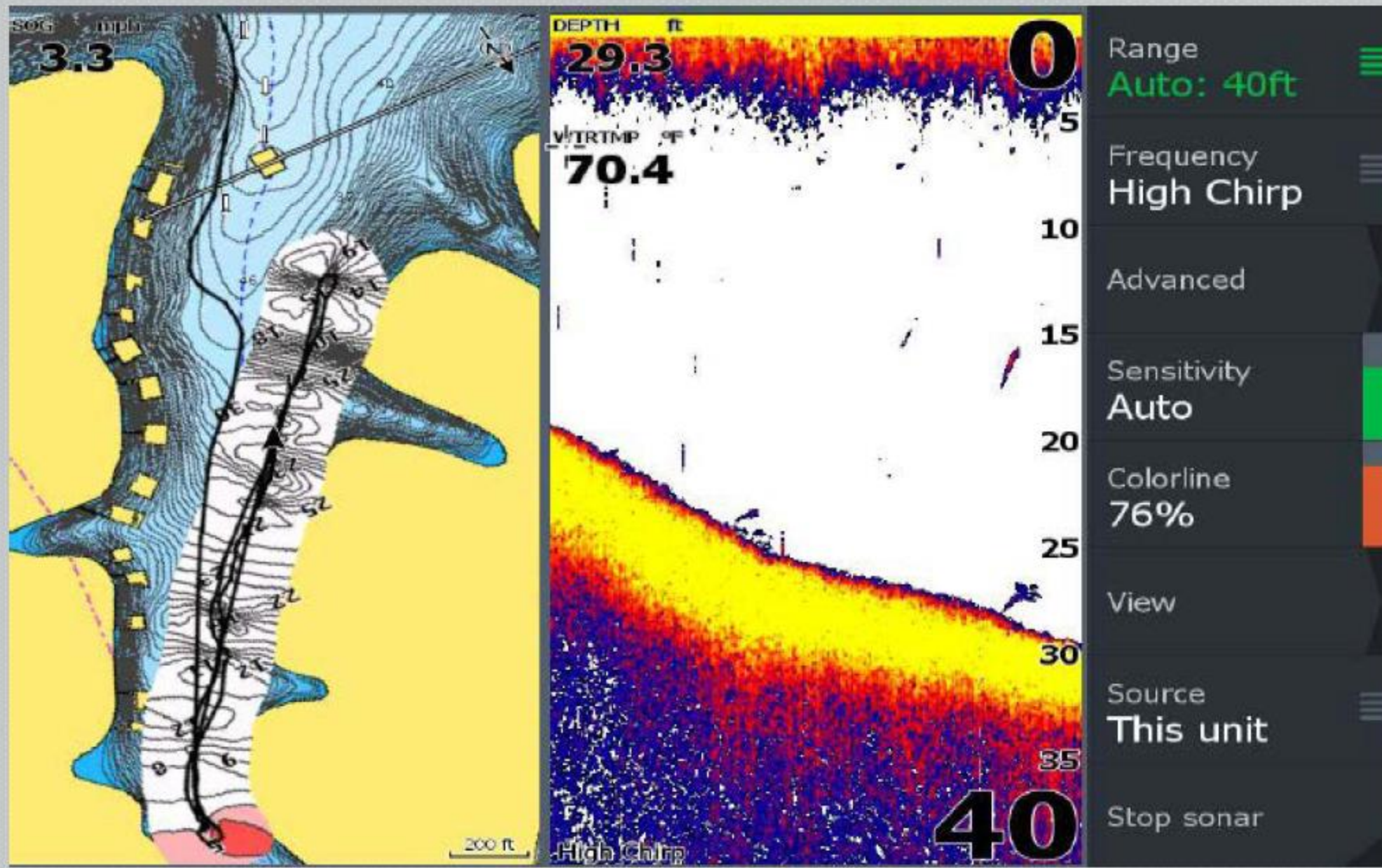
## Key Feature Summary:

- Easy to use:
  - Insert SD card with available space
  - Transducer with bottom lock – depth reading
  - Overlay – activate Genesis Live Overlay
- FREE



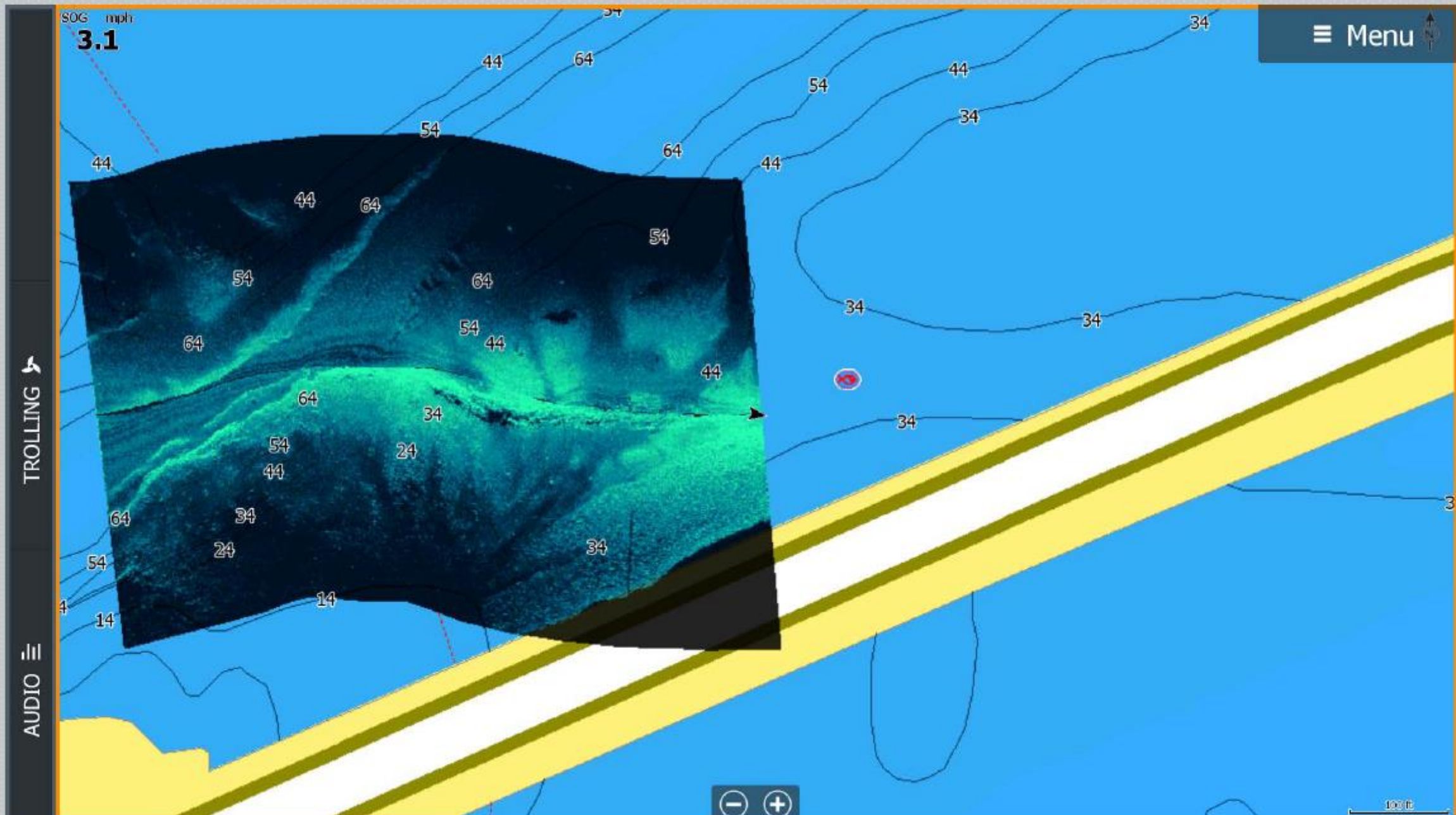


# NAVIONICS SONAR CHART LIVE





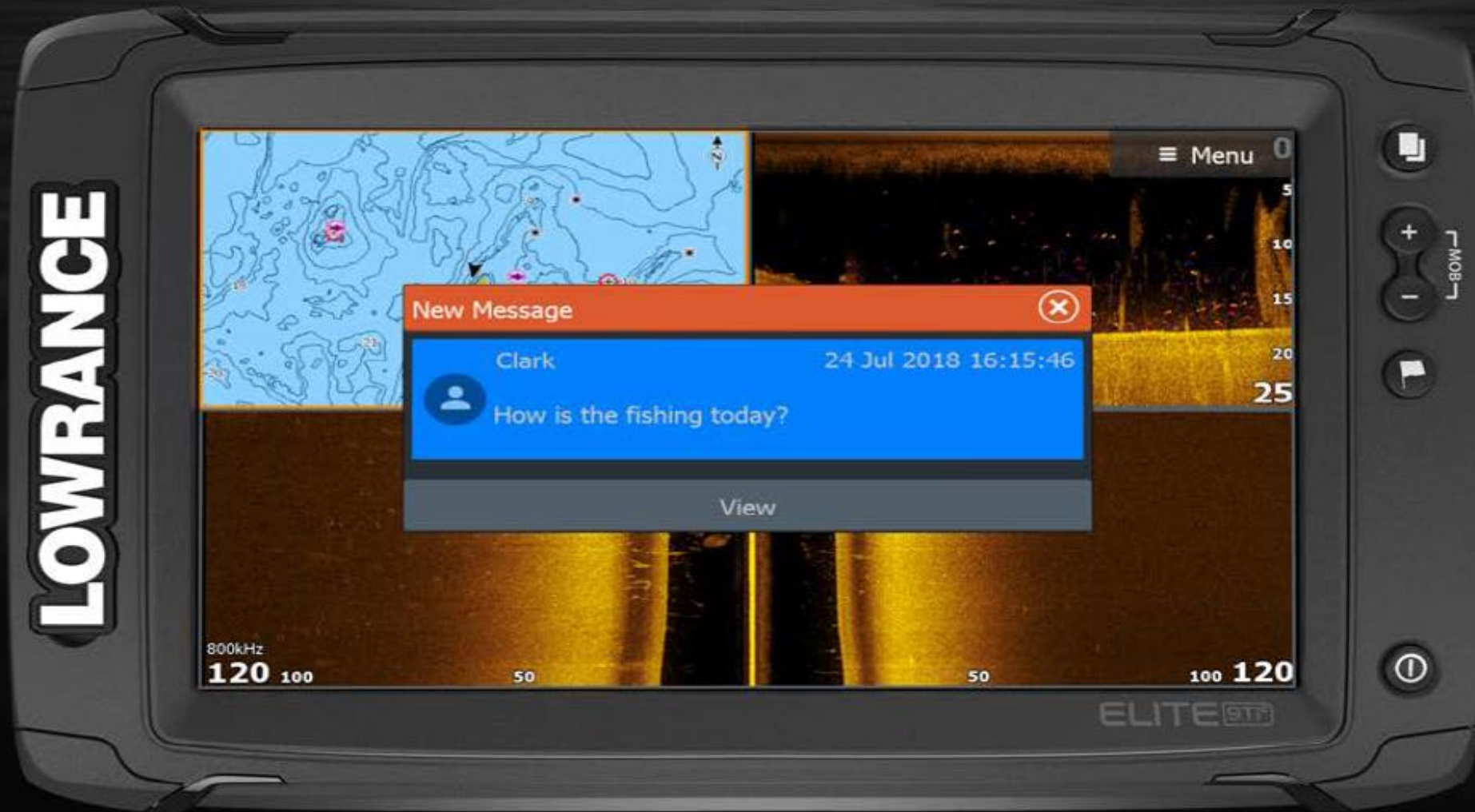
# STRUCTUREMAP



**ELITE**  - Phone Integration



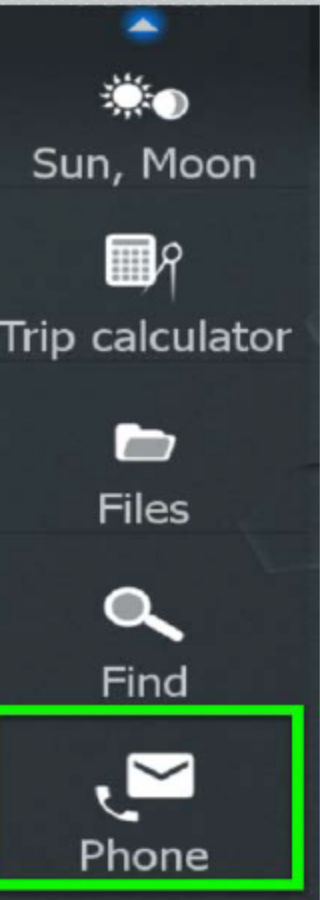
# CALL & TEXT NOTIFICATIONS






# CALL & TEXT NOTIFICATIONS

Keep your phone stored away in a safe location, and still see incoming call and text notifications:



Function	Android 	Apple iPhone
Display an incoming text message on the MFD	✓	✓
Reply to a message or create a new message to send from the MFD	✓	X
Create message templates on the MFD	✓	X
See historical messages	✓	X
See phone call log	✓	✓

Apple iOS does not allow for remotely connected Bluetooth devices to create or send messages

\* Some phones may not be supported. We have tested with the most common mobile phones as practical, and have had good results with those tested.



# Integration



NMEA2000®



SMARTSTEER™  
CONTROL



WIRELESS  
BUILT-IN



C-MAP



NMEA 2000®  
ENGINE  
INTERFACING



DSC VHF



GOFREE™  
SHOP



INSIGHT  
GENESIS™



MERCURY  
VESSELVIEW®



AUTOMATIC  
IDENTIFICATION  
SYSTEM



AUTOROUTING



NAVIONICS®



SONICHUB® 2



**ELITE** **Ti<sup>2</sup>** - UI / EASE OF USE

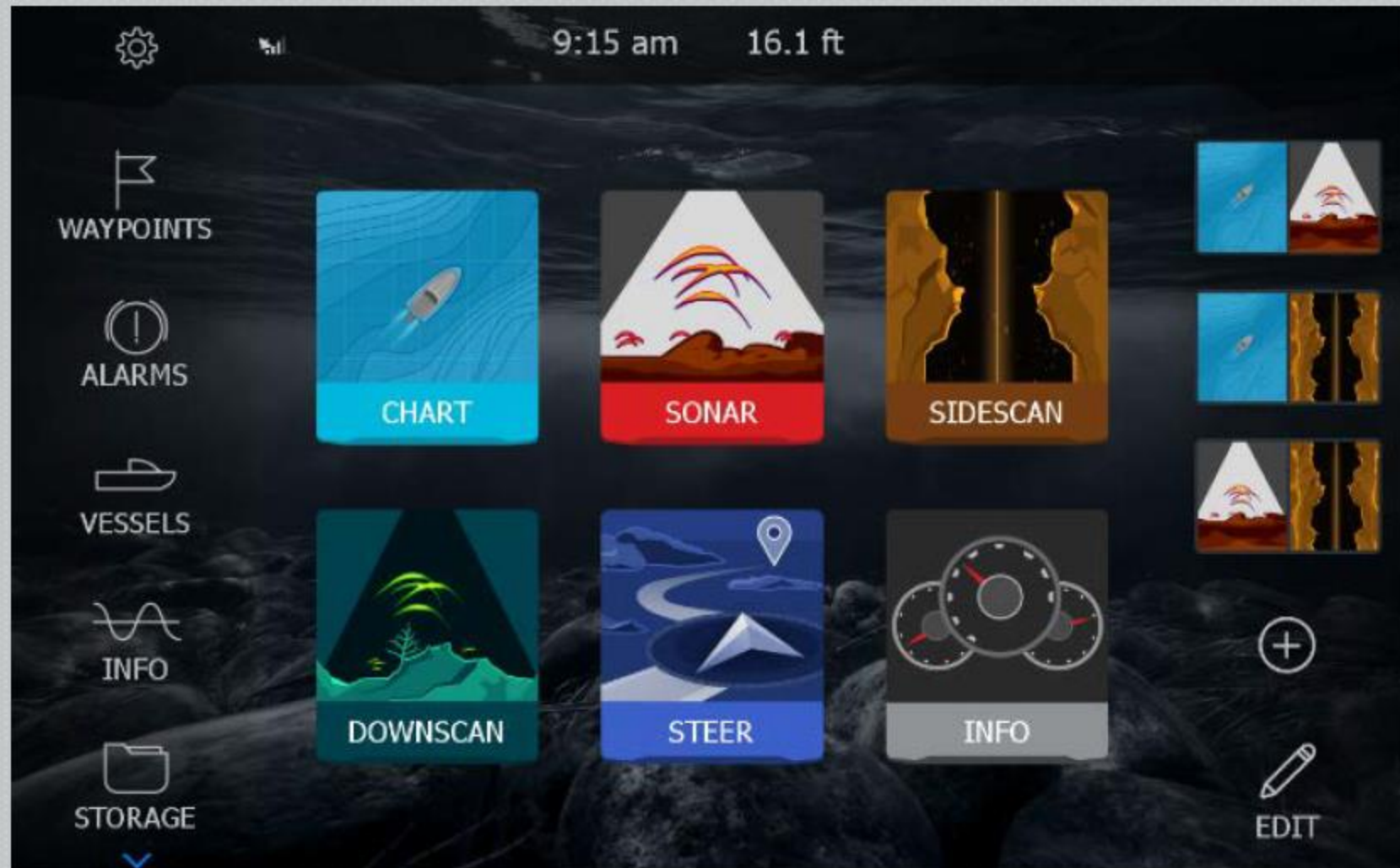


# Improved User Experience – Dedicated Home Screen Icons

No more searching through the “Structure” page menus to find your desired View (Down/Side)

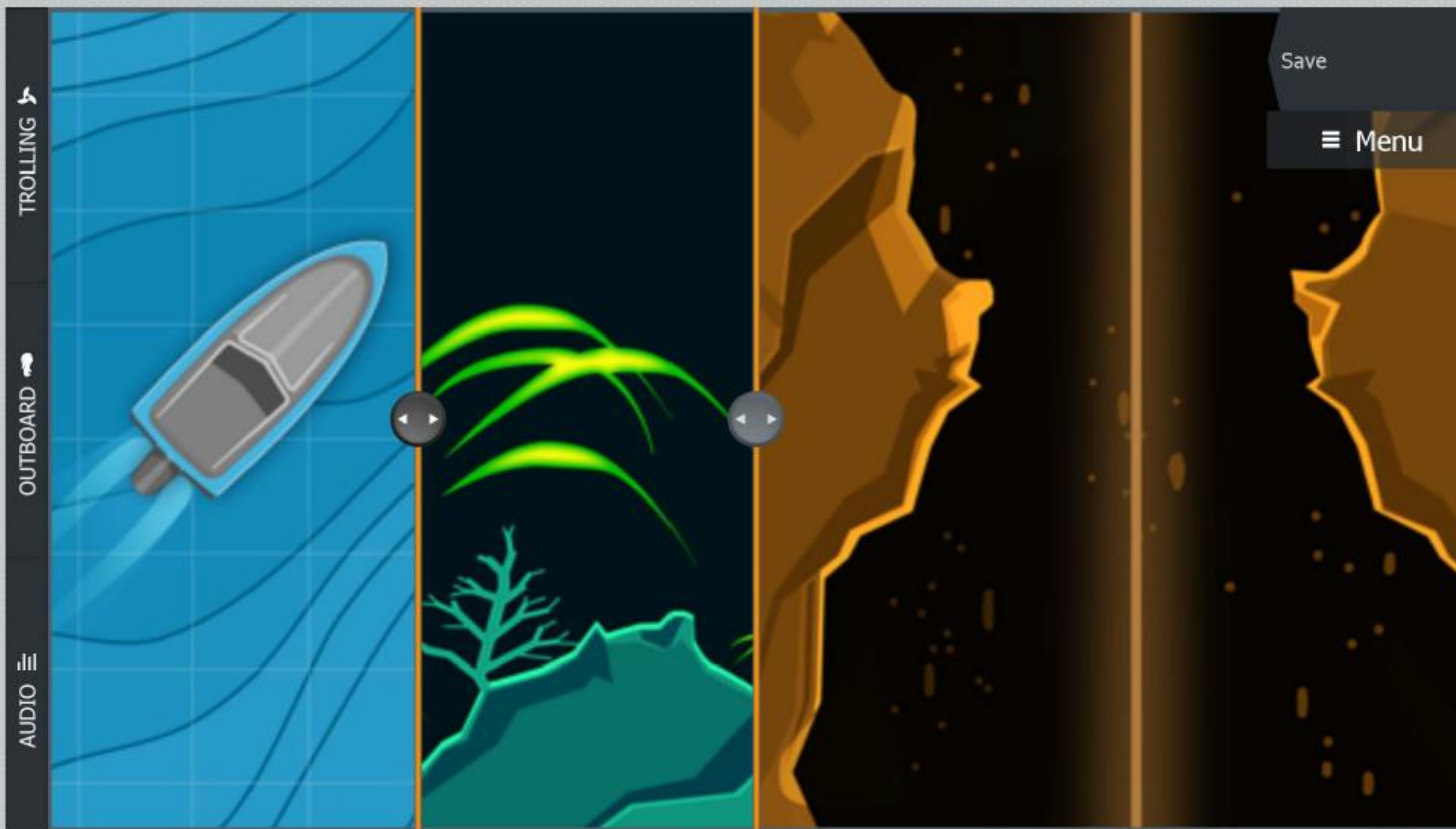
Each sonar view / technology now has it’s own icon right on the home screen if that view is available:

- SideScan
- DownScan





# Improved User Experience – Split Screen Options



Adjust 3-panel vertical split sizes



**ELITE**  - **Networking**

# NETWORKED TECHNOLOGIES



Share sonar, map cards & waypoints wirelessly between two units



View performance data from compatible outboard engines



Bluetooth PowerPole control and install system updates wirelessly



Connect SmartSteer trolling motor and Point-1 GPS



# WIRELESS NETWORKING



Share sonar, map cards & waypoints  
wirelessly between two units

# WIRELESS NETWORKING

Settings

- Navigation
- Chart
- Sonar
- Autopilot
- Fuel
- Alarms
- Units
- Wireless

Connect with another Elite-Ti2

Connect to the Internet...

Hotspot settings

Remembered hotspots

Remote control permissions

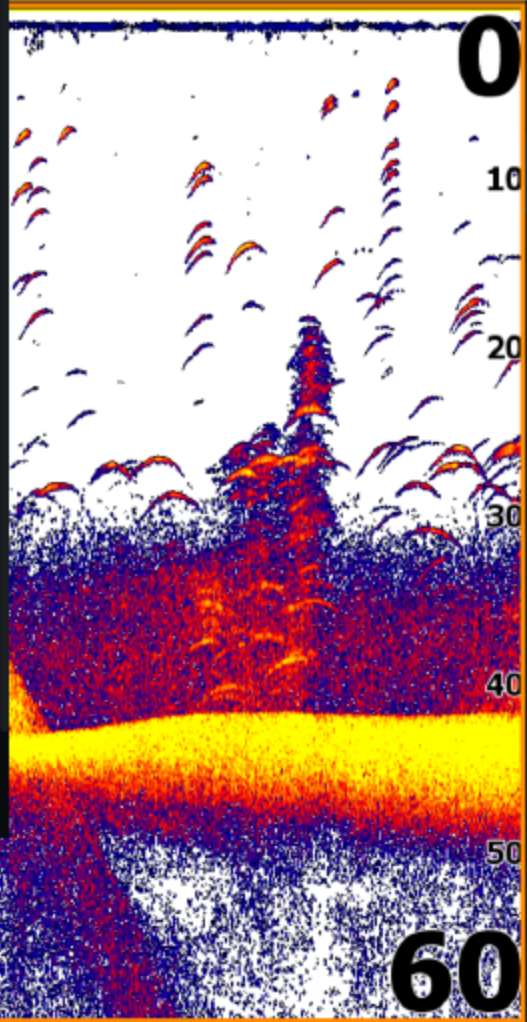
**Connect with another Elite-Ti2**

To connect two Elite-Ti2 units together wirelessly, you first need to select a base unit.

Choose this unit as the base unit

I've already chosen a base unit, make this my remote unit

Cancel



Back

**This unit**

Elite-7Ti2

OFF

OFF

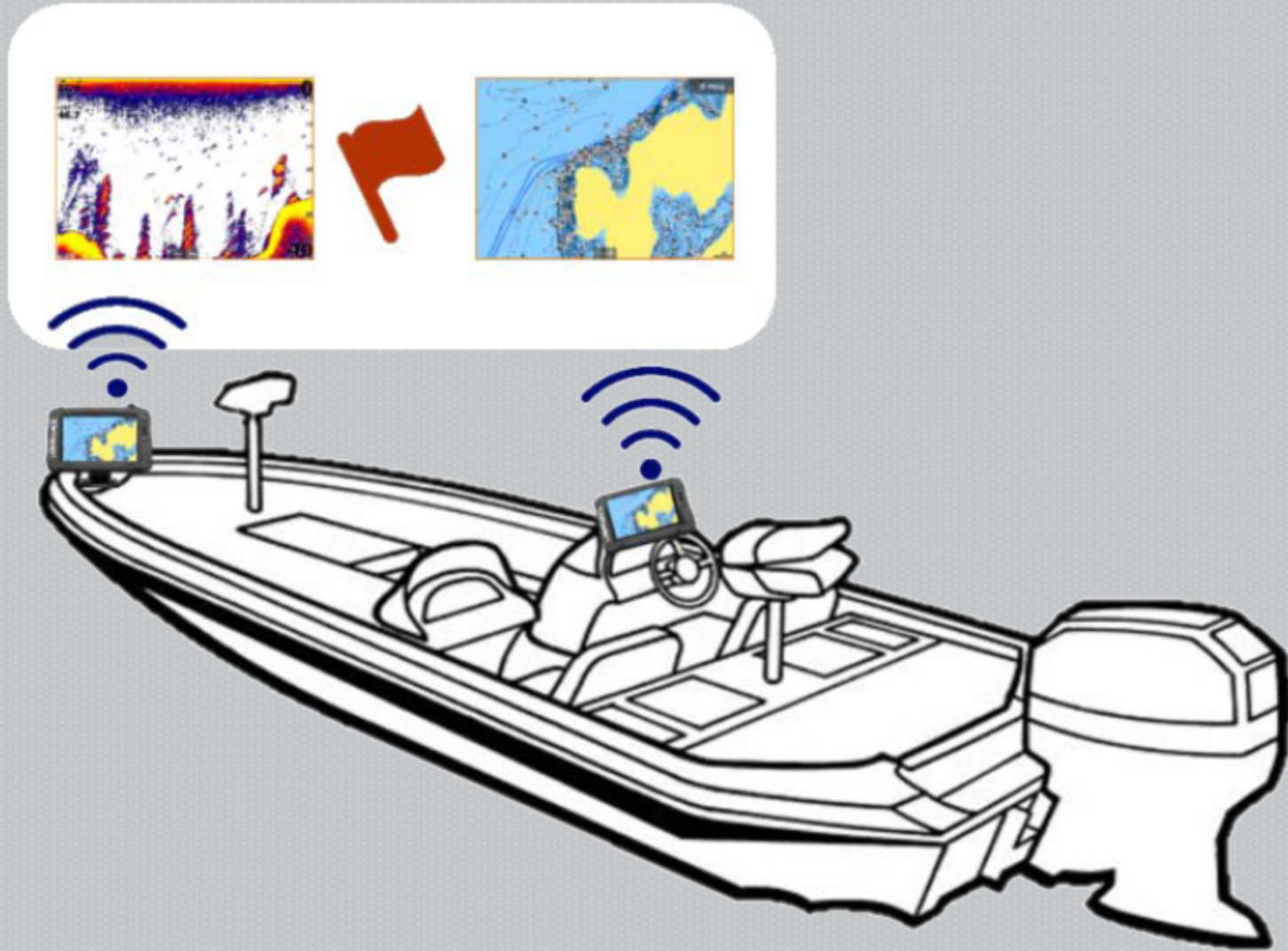
Not connected

ON

Elite12-Ti2 5190



# WIRELESS NETWORKING



- Connect two Elite Ti<sup>2</sup> units together to:
- Share sonar, charting and sync waypoints through wireless networking
- Simple connection and installation with no cables\* to run and easy network set up configurator

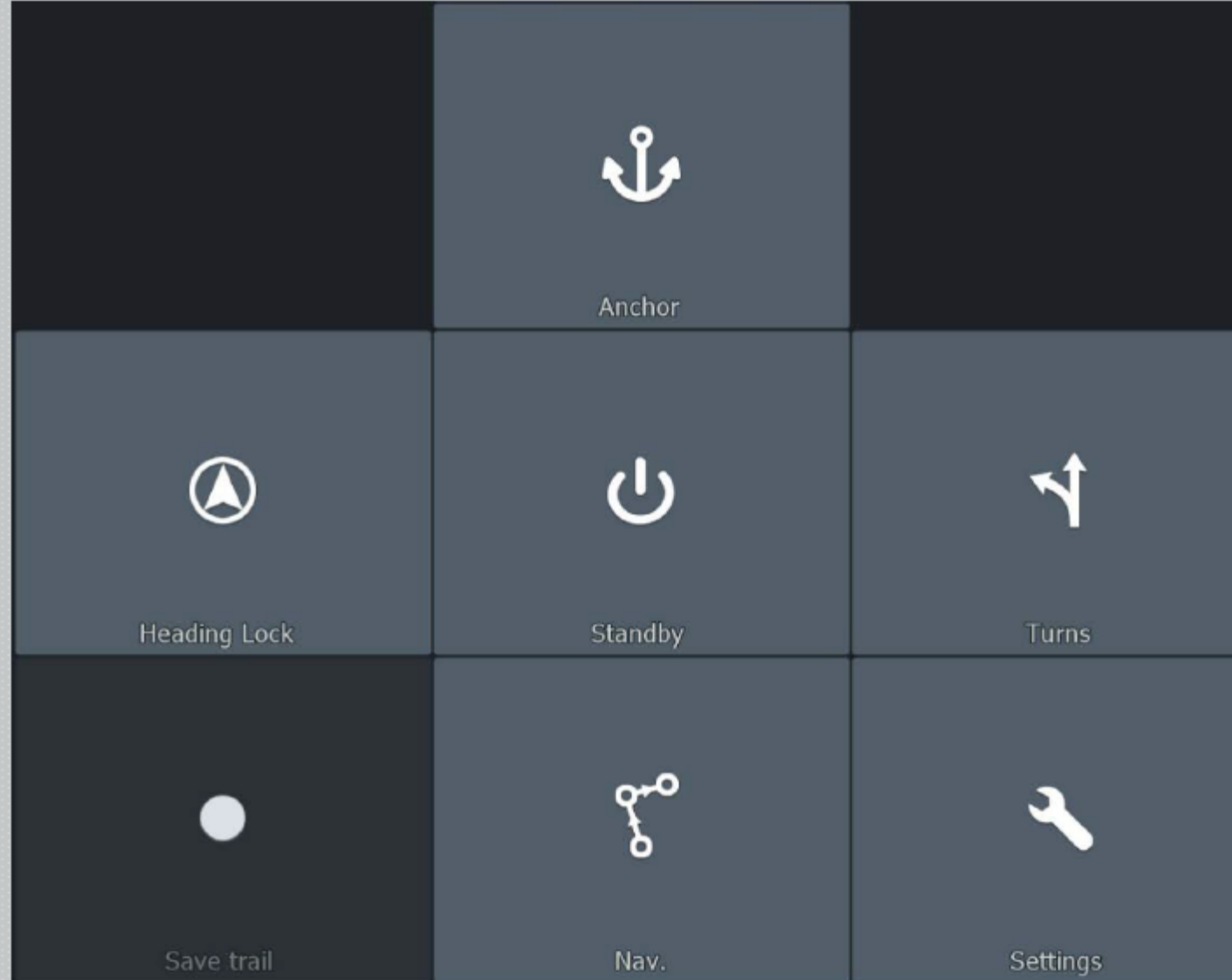
\*No cables needed to share sonar, waypoints, or mapping. An NMEA 2000 network is required for sharing GPS position, SmartSteer trolling motor control, Engine information, SonicHub, etc.

# SmartSteer – Trolling Motor

Onscreen control of  
MotorGuide Xi5 and Xi3  
pinpoint GPS equipped  
trolling motors:

Onscreen control of:

- Anchor Lock with  
directional jog control
- Heading Lock with  
direction control
- Follow Routes
- Go To cursor or waypoint  
on the GPS and sonar  
screens





# Product Positioning - Portfolio fit

Feature	Hook2	Elite Ti <sup>2</sup>	HDS Live	Benefit
CHIRP sonar	✓	✓	✓	Find more fish with better detail
FishReveal		✓	✓	See structure and fish in one easy to view format
DownScan Imaging™	✓	✓	✓	See what is below the boat in picture-like detail
StructureScan®	✓	✓	✓	SideScan reduces time spent searching for fish
Active Imaging		✓	✓	High Resolution SideScan and DownScan imaging sonar
Active Imaging 3D (optional)			✓	Easy to understand view of bottom structure and shape
LiveStrike			✓	See fish moving around structure - LIVE
Touch-screen (single touch)		✓	✓	Touch makes the product super easy to use
Touch-screen (pinch-to-zoom)			✓	Quickly change your chart view with pinch to zoom
Wireless/Bluetooth connectivity		✓	✓	Connectivity for great features and easy product service
Bluetooth Call/Text Notifications		✓	✓	See who is calling or sending a message without having to stop fishing
SonicHub connectivity			✓	Easily add music controls to your system
SmartSteer™ Control (Xi5)		✓	✓	Spend more time fishing, and less time adjusting your motor
SmartSteer™ (Outboard Pilot)			✓	Let us drive. More time to rig baits, and more time to fish
Engine/data sensors		✓	✓	Bring all of the data you want right to your screen
Radar connectivity			✓	Safety first, see objects with radar that you cannot see with your eyes
Video input			✓	Hook up a fish cam or connect your smart device via HDMI on 12 & 16"
Wide View Displays			✓	View the screen from any angle and through polarized glasses
Multiple Network Sounder			✓	Get complete coverage around your boat to see more fish

# PRODUCT DESCRIPTION

Enhancements from

Ti

to

Ti<sup>2</sup>

CHIRP sonar	✓	✓
DownScan Imaging™	✓	✓
StructureScan®	✓	✓
Touch-screen (single touch)	✓	✓
Wireless/Bluetooth connectivity	✓	✓
SonicHub2/N2k Audio connectivity	✓	✓
SmartSteer™ Control (Xi5)	✓	✓
Engine/data sensors	✓	✓
Genesis Live	✓	✓
<u>Active Imaging High Resolution SideScan/DownScan</u>		✓
<u>Wireless Networking (Sonar/Charts/Waypoints)</u>		✓
<u>Bluetooth Call/Text Notifications</u>		✓
<u>Detailed Embedded Regional Cartography</u>		✓