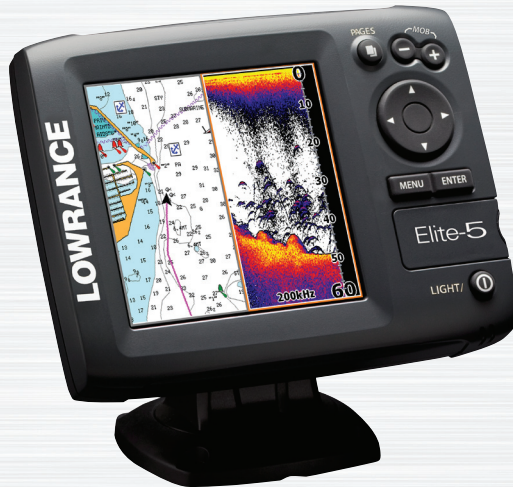



LOWRANCE®



Elite 5, Elite 4 & Mark 4 Operation manual



**Copyright © 2011 Navico
All rights reserved.**

Lowrance® and Navico® are registered trademarks of Navico.

Fishing Hot Spots® is a registered trademark of Fishing Hot Spots Inc.

Navionics® is a registered trademark of Navionics, Inc.



Navico may find it necessary to change or end our policies, regulations and special offers at any time. We reserve the right to do so without notice. All features and specifications subject to change without notice.










**Visit our website:
www.lowrance.com**

Table of Contents

Introduction.....	3	Advanced Mode	10
Unit Controls.....	3	Standby mode	10
Inserting microSD cards	4	Restore defaults	10
Setup wizard.....	5	Adjusting the display.....	10
Basic Operation	5	Pages	11
Selecting Pages.....	5	Steer Page.....	11
Page menus	6	Sonar Page.....	11
Working with menus	7	Chart/Sonar page	12
Dialogs.....	8	Chart Page	12
Entering text	8	Overlay Data.....	13
Fishing Modes	8	Chart/Sonar split.....	13
Cursor.....	9	Using your Sonar.....	15
Goto cursor.....	9	Trackback	15

Table of Contents

Sonar Menu	15	System.....	30
Sensitivity	16	Saving Screenshots.....	32
Colorline/Grayscale	17	Navigation.....	33
Depth Range	17	Chart.....	34
Frequency	18	Sonar	36
Ping Speed (Advanced Mode only).....	18	Installation	37
Fish ID	20	Alarms	38
Using your Chart	21	Index	40
Chart Menu.....	21	Specifications	42
Waypoints, Routes, Trails.....	22		
Routes Screen.....	23		
Trails Screen	27		
Orientation	29		
Settings	30		

Unit Controls	
	LIGHT/POWER: controls backlight level and turns unit on/off
	KEYPAD: controls cursor & selects items on menus
	PAGES: allows you to select a page to view
	MENU: opens settings, context and page menus
	ENTER: finalizes menu selections; save waypoint at cursor position
	MOB: press and hold both Zoom keys to create a Man Overboard waypoint
	ZOOM Keys: used to zoom in/zoom out
microSD slot: insert a blank microSD card to save screen captures; or insert a microSD mapping card to use mapping data (See illustration on page 2)	

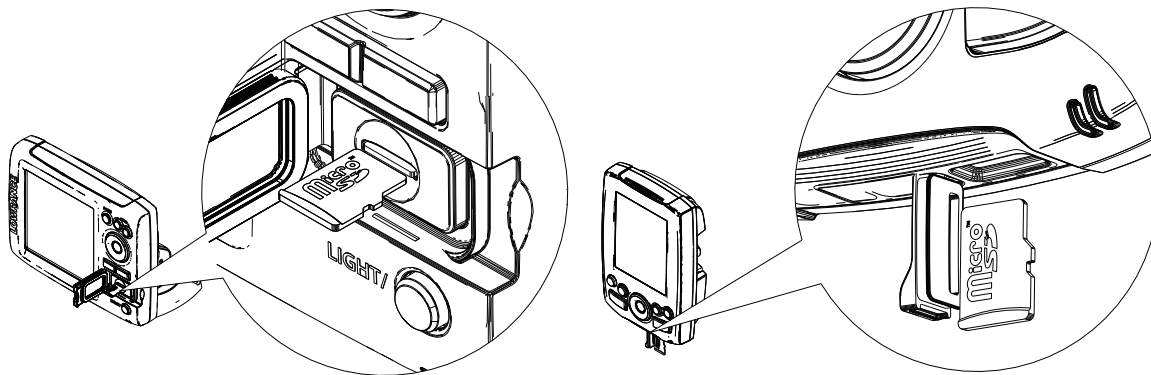
Getting Started	
Turn unit on/off	To turn on/off the unit, press and hold the LIGHT/POWER key for three seconds.
Man Overboard waypoint	Press the ZOOM IN and ZOOM OUT keys at the same time to set a Man Overboard waypoint. Your system will automatically create an active route back to the MOB waypoint. You must cancel navigation to terminate the function.
Adjusting the backlight	This unit has 10 backlight levels. Press the LIGHT/POWER key to switch backlight levels.
Muting Audio	Select Mute Audio from the System menu and press ENTER .
Selecting a GPS Source	Select GPS Source from the System menu and press ENTER . Select <i>internal</i> or <i>external</i> and press ENTER . (Elite-5 only)

Introduction

Inserting microSD cards

Carefully slide the microSD card into the slot until it clicks into place.

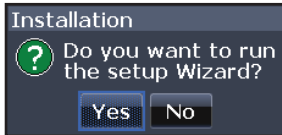
To remove, carefully push in the card until it clicks out of place.



Basic Operation

Setup wizard

The Setup wizard will appear when the unit is turned on for the first time. To choose your own settings, do not run the setup wizard.



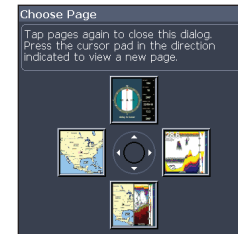
To restart the Setup wizard, restore defaults.

NOTICE

This manual covers several units. Some screenshots may differ from what you see on your screen. Your unit, however, will function in a similar manner.

Pages

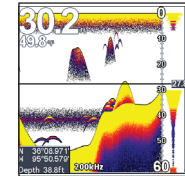
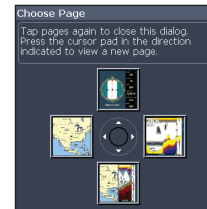
This unit has four pages: Sonar, Chart, Sonar/Chart and Steer.



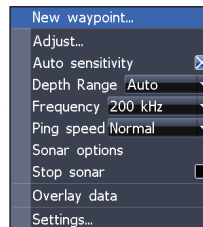
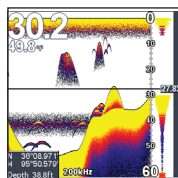
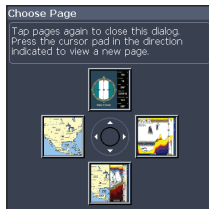
Pages menu

Selecting Pages

To select a page, press the keypad in the direction of the desired page.



Basic Operation

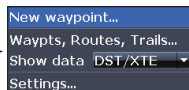


Sonar page

Sonar menu

Page menus

The Steer, Sonar, Chart/Sonar and Chart pages have menus that can only be accessed when those pages are displayed.



Steer menu

Steer page

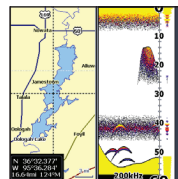


Chart or sonar menu will appear depending on which panel is active. Press the **PAGES** key twice to switch active panels.

Chart/Sonar page

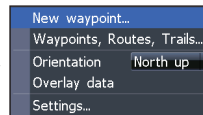
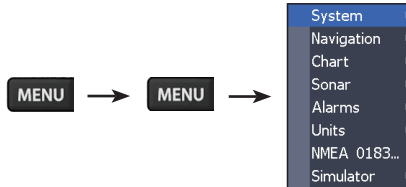


Chart menu

Chart page

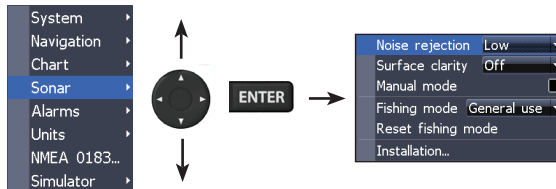
Basic Operation

Accessing the Settings menu



Accessing menu items

The keypad and **ENTER** key are used to select menu items and open submenus. Use the keypad to highlight the desired item and press **ENTER**.



Working with menus

There are several menu types used to make adjustments to options and settings, including scrollbars, on/off features and dropdown menus.

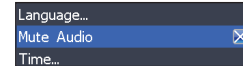
Scrollbars

Select the scrollbar and press the keypad left (decrease) or right (increase).



On/Off features

Select an on/off menu item and press **ENTER** to turn it on/off.



Dropdown menus

After accessing the dropdown menu, press the keypad up/down to select the desired item and press **ENTER**.



NOTE: Press the **MENU** key to Exit menus.

Basic Operation

Dialogs

Dialogs are used for user input or for presenting information to the user.

Depending on the type of information or entry, different methods are used to confirm, cancel or close the dialog.

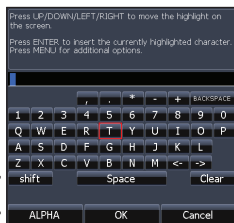


Entering text

Some functions, like naming a waypoint, route or trail, will require you to input text.

Switches letters to uppercase/lowercase

Switches keyboard between Alpha and QWERTY layout

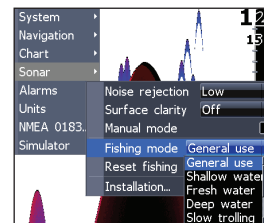


To input text:

1. Use the keypad to select the desired character and press **ENTER**.
2. Repeat Step 1 for each character.
3. When entry is completed, highlight **OK** and press **ENTER**.

Fishing Modes

Fishing modes enhance the performance of your unit by providing preset packages of sonar settings geared to specific fishing conditions.



Basic Operation

Fishing Mode Options	
General Use	Bottom brown/white background; 50% ping speed
Shallow Water	Bottom brown/white background; best for depths less than 100 feet
Fresh Water	Bottom brown/white background; 50% ping speed
Deep Water	Deep Blue; 50% ping speed; 50kHz is primary transducer frequency
Slow Trolling	Bottom brown/white background; 50% ping speed
Fast Trolling	Bottom brown/white background; slightly lower chart speed
Clear Water	Bottom brown/white background; 50% ping speed
Brackish Water	Bottom brown/blue background; higher ASP; slightly lower chart speed



NOTE: Use *Fresh Water* mode when fishing in less than 100 feet of water; otherwise your unit may not track bottom properly.

Cursor

The keypad moves the cursor around the display, allowing you to scroll the map, select map items and review sonar history.

Press **MENU** and select *Return to vessel* or *Exit cursor mode* to clear the cursor.

Goto cursor

Allows you to navigate to the cursor.

1. Move the cursor to a desired location and press **MENU**.
2. Select *Goto cursor* and press **ENTER**.

Basic Operation

Advanced Mode

Enables advanced features and settings.

The following features are enabled when Advanced mode is turned on:

- Colorline (manual control)
- Surface Clarity (manual control)
- Ping Rate (manual control)
- Alarms (Enables arrival, off course and anchor alarm options)
- NMEA 0183 Output
- Units (Enables distance, speed, depth, temperature, and bearings options)

Standby mode

Lowers power consumption by turning off sonar and the display.



Press the **PWR/LIGHT** key to access the Backlight dialog. Select **Standby** and press **ENTER**.

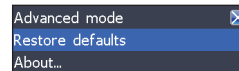
Press any key to resume normal operation.



NOTE: *Leaving your unit in Standby mode when your boat is not in use will run down your battery.*

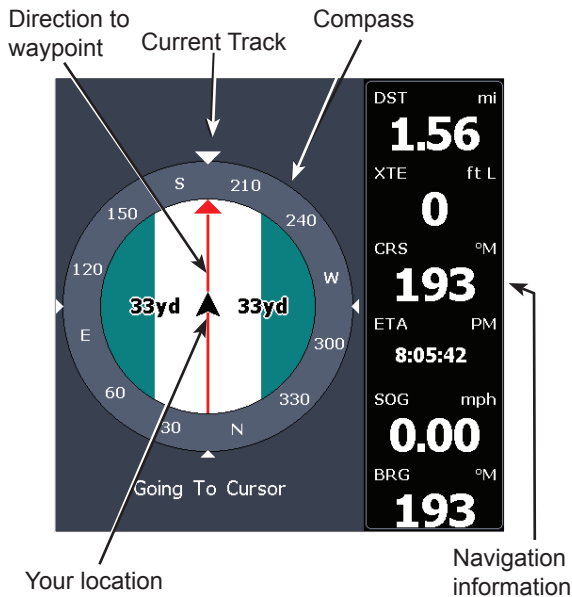
Restore defaults

Resets unit options and settings to defaults.



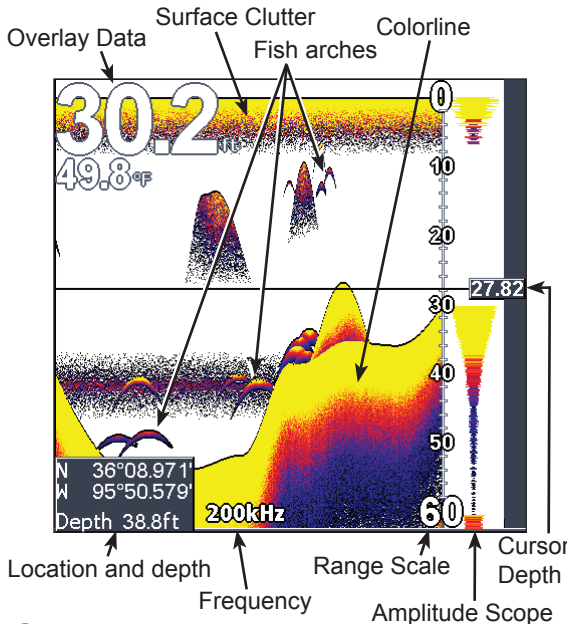
Adjusting the display

You can make adjustments to the display using Sensitivity, Colorline and Palettes. Those features are covered in the Sonar section.



Steer Page

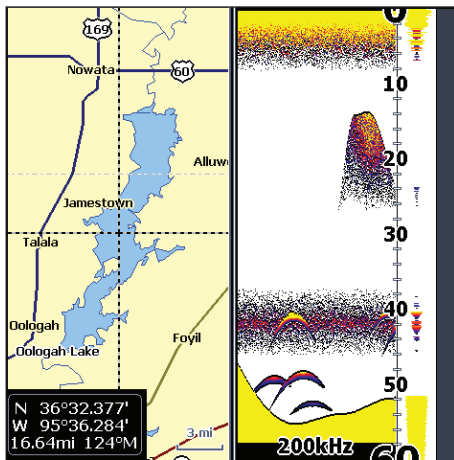
The Steer page has a compass that shows your current track, the direction to your destination, and a digital data navigation panel.



Sonar Page

Displays the water column moving from right to left on your unit's screen. On the right side of the screen, the Amplitude Scope bar previews echoes about to appear on the display.

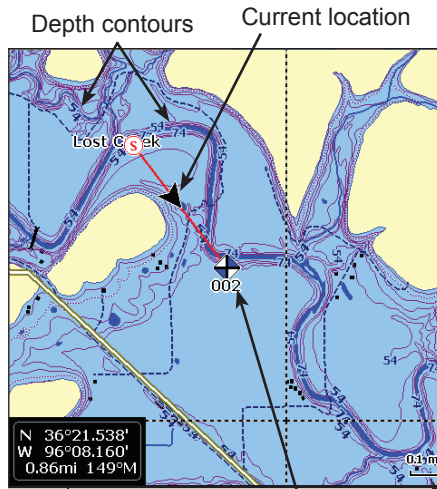
Pages



Chart/Sonar Page

Chart/Sonar page

Consists of a chart/sonar splitscreen. Press the **PAGES** key twice to switch active panels. The active panel will have an orange border.



Current location;
distance to cursor

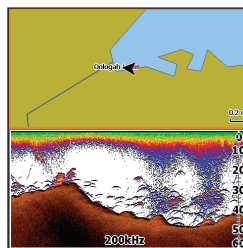
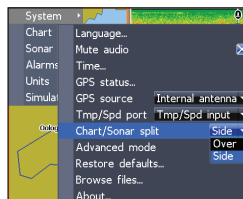
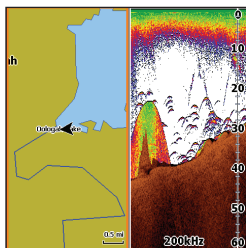
Waypoint
Zoom
Range

Chart Page

Consists of map that moves in real-time as you move. By default, the map is shown from a birds-eye view with North at the top of the screen.

Chart/Sonar split

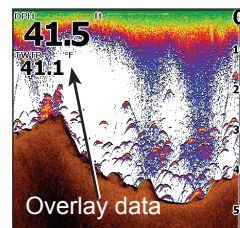
Allows you to change the way the panels are displayed when viewing the Chart/Sonar page.



Press the **PAGES** key twice to switch active panels.

Overlay Data

Displays selected overlay data on the sonar page.



Show

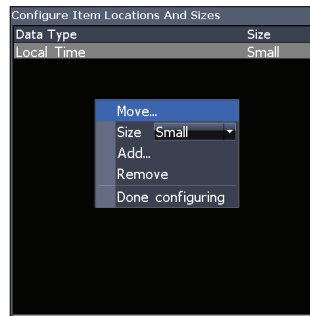
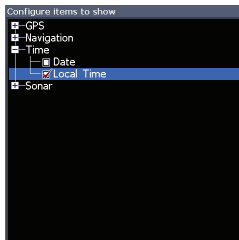
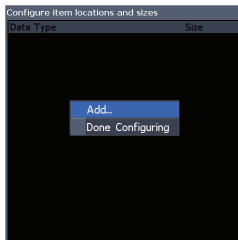
Enables/disables the display of overlay data, allowing you to remove overlay data from the screen without deleting the selected overlay data configuration.



Configure

Used to select overlay data to be displayed on the screen.

Pages



To select overlay data:

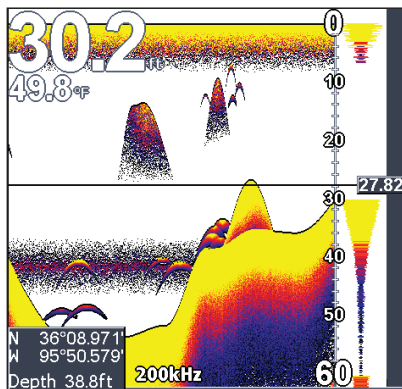
1. From a sonar or chart page, press **MENU**.
2. Select *Overlay data* and press **ENTER**.
3. Select *Configure* and press **ENTER**.
4. Press *Menu* and select *Add*. Press **ENTER**.
5. Select a category from the Configure Items to show screen. Press **ENTER**.
6. Press **MENU** and select *Return to overlay*.
7. Press **MENU**, select *Done Configuring* and press **ENTER**.

Customizing Overlay Data

Access the Overlay Data configuration menu to make adjustments to the size and/or location of overlay data on the display.

Press Menu from the Configure Item Locations and Sizes screen to access the menu.

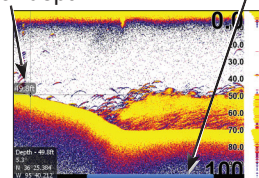
Using your Sonar



Trackback

You can review your recent sonar history by moving the cursor to the left until the screen starts to move in reverse.

Cursor depth Blue sonar history bar

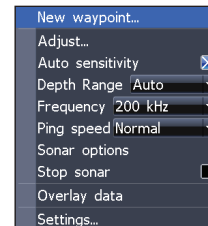


Move the blue sonar history bar all the way to the right to resume normal sonar scrolling.

Press **MENU** and select *Exit cursor mode* to remove the cursor from the screen.

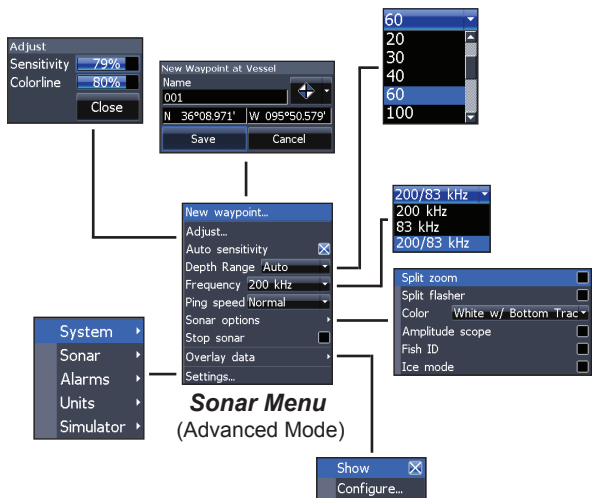
Sonar Menu

The sonar menu has options and settings that affect the appearance of the display.



Sonar

Press Menu from any sonar page to access the Sonar menu.

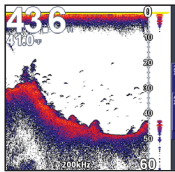


New Waypoint

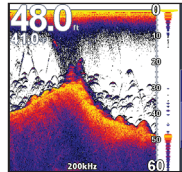
Places a waypoint at your current position or at the cursor position. From the new waypoint menu, you can input a waypoint name, select an icon and input a desired latitude/longitude.

Sensitivity

Controls the level of detail shown on the display. Too much detail will clutter the screen. If Sensitivity is set too low, desired echoes may not be displayed.



Sensitivity set to 65 percent.



Sensitivity set to 85 percent.

Colorline/Grayscale

Separates strong sonar echoes from weak sonar echoes. That makes it easier for you to distinguish fish or structure from the bottom. A hard return will be shown as a wide, bright yellow area, whereas a soft return will be a narrow reddish-blue area.

Mark series units have a monochrome display, so wide bands of gray indicate a hard sonar return, while softer returns are shown as dark, narrow lines.

Auto Sensitivity

Keeps sensitivity at a level that works well under most conditions, reducing the needs for adjustments. Auto Sensitivity is turned on by default.



NOTE: You can make minor (+/-4%) changes to sensitivity with Auto Sensitivity turned on. You will have to turn it off to make significant adjustments.

Depth Range

Selects the deepest range shown on the display. Range settings display the section of the water column from the water surface to the selected depth range.

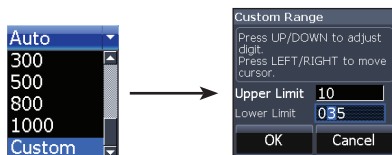


If you select too shallow a depth range, the unit will not be able to lock onto the bottom.

Sonar

Custom Range — Upper and Lower Limits (Advanced Mode only)

Used to select the upper limit and lower limit of a section of the water column. That allows you to view a section of the water column that does not include the water surface.



Custom range menu

Upper and lower limits must be at least 6.5 ft (2m) apart.



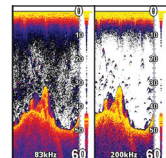
NOTE: When using a custom range, you may not receive any digital depth readings, or you may receive incorrect depth information.

Frequency

Controls the transducer frequency used by the unit. This unit supports two frequencies: 200kHz and 83kHz.



Frequency menu



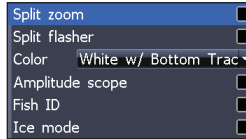
200 kHz has the highest sensitivity and best target discrimination in shallow water. 83 kHz offers a wider cone angle for more water coverage.

Ping Speed (Advanced Mode only)

Controls the rate the transducer uses to send sonar waves into the water. Ping speed adjustments can help reduce interference from other transducers. When using fishing modes, ping speed settings are optimized for the selected fishing conditions, so in most cases, adjustments are not necessary.

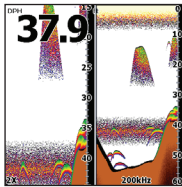
Sonar Options

Accesses sonar display settings and configuration options.

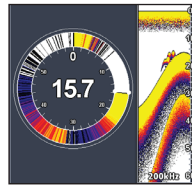


Split Zoom and Split Flasher

Switches the sonar display from full screen sonar to a split screen view.



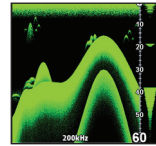
Split Zoom



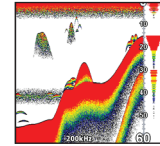
Split Flasher

Color

Allow you to change the look of the display using palettes with varying degrees of color/brightness.



Nightview

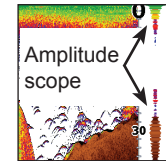


Iceview

Monochrome units support Grayscale, Reverse Grayscale and Bottom Black.

Amplitude Scope

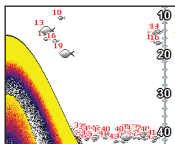
Displays the amplitude of real-time echoes before they appear on the display.



Sonar

Fish ID

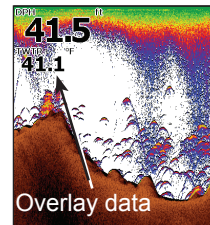
Displays fish echoes as fish symbols instead of fish arches. Fish ID is not the most accurate method of fish detection since structure and suspended debris may be shown as a fish symbol on the display.



Overlay Data

Allows you to select data (water temperature, depth, etc) to be displayed on top of the Sonar screen.

Overlay data setup is covered in the Pages section.



Ice Mode

Turns on a package of sonar settings optimized for ice fishing and also overlays battery meter data on the screen.

Stop Sonar

Pauses the unit's sonar, allowing you to get a closer look at suspended targets.

Stop Sonar also can be used to prevent/stop interference between two units running on the same boat at the same time.

Settings

Accesses the Sonar settings menu.

Using your Chart

This section covers chart operation, which includes saving, loading and navigating, waypoints, routes and trails and using chart menus, context menus and submenus.



Chart Menu

Press Menu from any Chart pages to open the Chart menu.

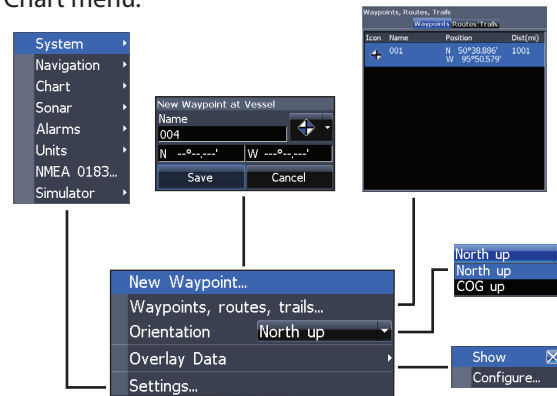


Chart menu

New Waypoint

Creates a waypoint at your current location or at the cursor position. When the cursor is on the screen, waypoints will be saved at the cursor position; conversely, if the cursor is not displayed onscreen, waypoints will be saved at your current position.

Chart

Waypoints, Routes, Trails

Used to create, edit, navigate and delete waypoints, routes and trails.

Press the keypad left/right to toggle between waypoint, routes and trails tabs.

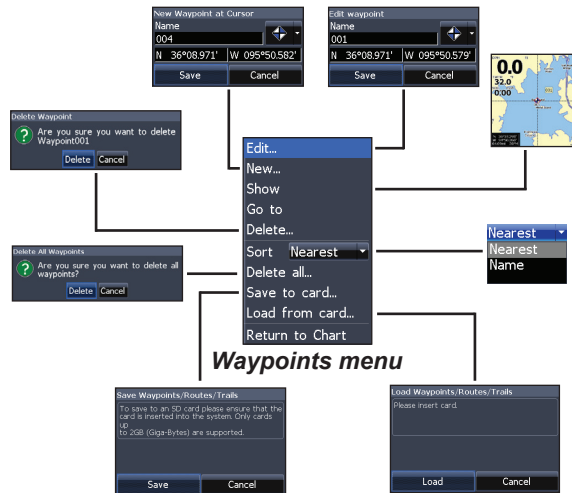
Waypoints, Routes, Trails			
Waypoints		Routes	Trails
Icon	Name	Position	Dist.(m)
↖	001	N 50°38.886' W 95°50.579'	1001

Waypoints Screen



- Edit...
- New...
- Show
- Go to
- Delete...
- Sort Nearest
- Delete all...
- Save to card...
- Load from card...
- Return to Chart

Waypoints menu



Edit

Allows you to edit the name, icon and latitude/longitude of a selected waypoint.

Edit waypoint	
Name	001
N 36°08.971'	W 095°50.579'
Save	Cancel

New

Creates a new waypoint at the cursor or vessel position. You can also select waypoint name, icon and latitude/longitude from the new waypoint menu.



Show

Displays the selected waypoint on the map.

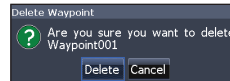


Goto

Allows you to navigate to a waypoint.

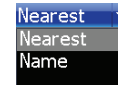
Delete and Delete All

Delete is used to delete a selected waypoint. Delete All deletes all waypoints.



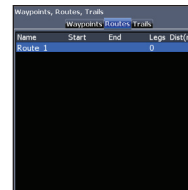
Sort

Controls how the waypoints list will be sorted — by name or by nearest.

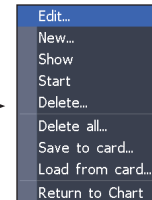


Routes Screen

Used to create, edit, navigate and delete routes. Use the keypad to highlight the Routes tab to access the Routes screen.



Routes screen



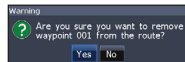
Routes menu

Creating a route

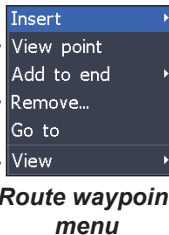
Routes can be created by inserting waypoints from the waypoints list or by using the cursor to position new points on the chart. You also can add waypoints to a route by selecting them from the chart screen.

Chart

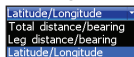
Shows selected route waypoint on the chart



Remove waypoint

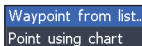
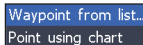


Route waypoint menu



Controls how waypoints are listed

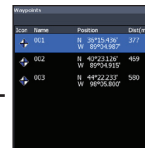
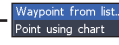
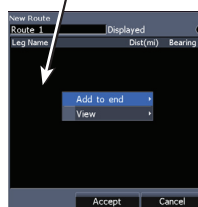
Inserts waypoint between existing route waypoints



Adds waypoint to end of the route

Starts navigation to the selected route waypoint

Leg name field



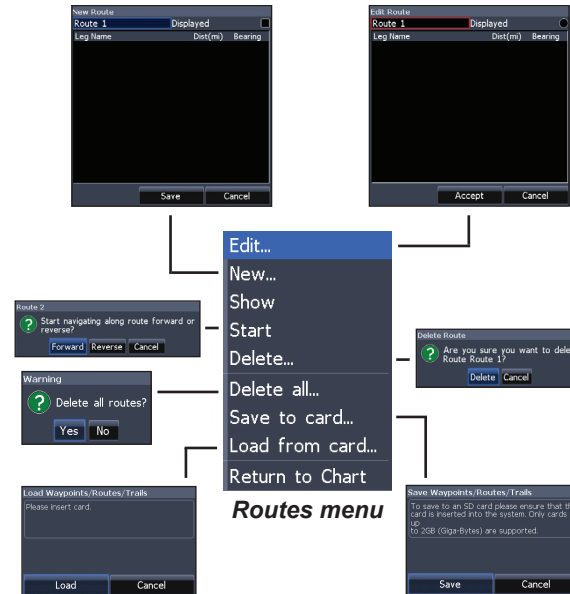
To create a route from waypoint list:

1. Press **MENU** from the Routes screen.
2. Select *New...* and press **ENTER**.
3. Press the keypad down to select the Leg name field and press **ENTER**.

4. Press **MENU**, select *Add to End* and press **ENTER**.
5. Highlight *Waypoint* from list and press **ENTER**.
6. Select the desired waypoint and press **ENTER**.
7. Press **MENU** and select *Add to end* to add another waypoint to the route.
8. When the route is complete, press **MENU**, select *Stop Editing* and press **ENTER**.
9. Select *Save* and press **ENTER**.

Creating a route using points from chart:

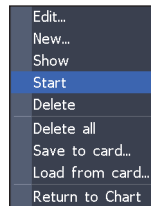
1. Repeat Steps 1-4 from the instructions for Creating a route from waypoint list.
2. Select *Points from chart* and press **ENTER**. The chart screen will appear.
3. Move the cursor to the desired location. Press **ENTER** to set a waypoint.
4. Repeat Step 3 to add more route waypoints.
5. Press **MENU** and select *Stop adding*. Press **ENTER**.
6. Highlight the *Save* button and press **ENTER**.



Navigating a route

Routes can be navigated in forward or reverse.

1. Select the desired route on the Route screen and press **MENU**.



2. Select *Start* and press **ENTER**.
3. Select *Forward* or *Reverse* and press **ENTER**.
4. Press **MENU** and select *Return to Chart*. Press **ENTER**.

Chart

To cancel navigation:

1. Press *Menu* from the chart screen.
2. Select *Navigation* and press **ENTER**.
3. Highlight *Cancel* and press **ENTER**.
4. Select *Yes* and press **ENTER**.

Edit and New Route menus


Used to edit/create routes, route names and to turn on/off the route display. That allows you to display only desired routes on the map.

To access the Edit or New Route menu, select *Edit* or *New* on the Routes menu and press **ENTER**.

To finalize changes on the Edit or New Route menus, highlight the *Accept* button and press **ENTER**.

Displayed

Used to show/hide a route on the display, which prevents the screen from being cluttered by too many routes



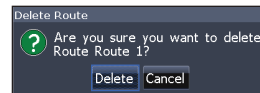
The image shows a sequence of three screenshots illustrating the 'Edit Route' process. The top screenshot is a keypad with a red highlight on the 'MENU' key. The middle screenshot shows the 'Edit Route' menu with 'Route 1' selected and the 'Displayed' checkbox checked. The bottom screenshot shows the 'Edit Route' menu with 'Route 1' selected and the 'Displayed' checkbox unchecked. Arrows indicate the flow from the keypad to the menu, and from the menu to the 'Displayed' checkbox.

Use keypad to select Route leg window

Turns on/off route display on map

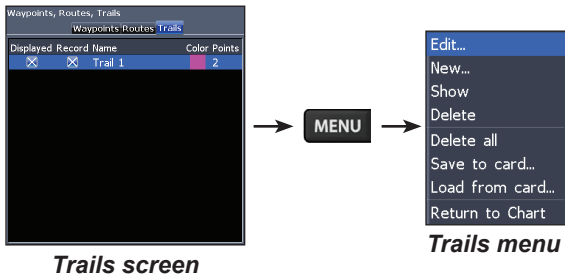
Delete and Delete All

Delete is used to delete individual routes. Delete All, removes all routes.



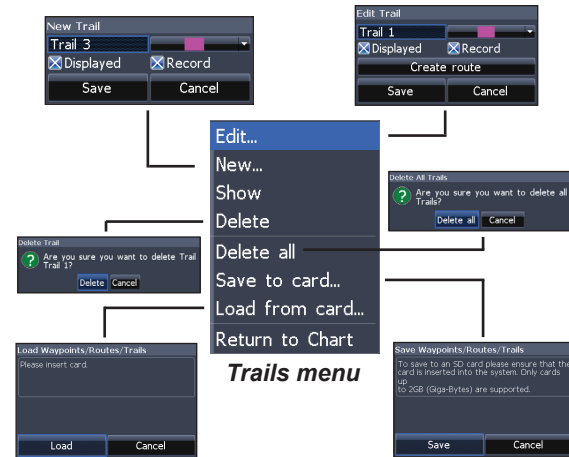
Trails Screen

Used to create, edit, navigate and delete trails. Use the keypad to highlight the Trails tab to access the Trails screen.



Creating trails

When creating a trail you can customize the trail name and color from the New Trail.



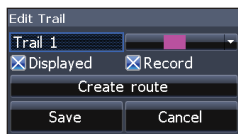
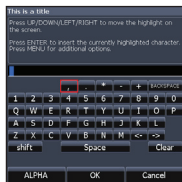
To create a trail:

1. Select *New* and press **ENTER**. The New Trail will appear.
2. Use the keypad to highlight *Record* and press **ENTER** to make the trail active/inactive.
3. Select *Save* and press **ENTER**.

Chart

Edit and New Trail menus

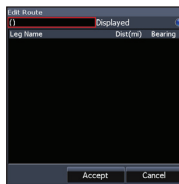
Allows you to edit/create trails, select trails names, trail color, trail display and the trail being recorded. You can also convert a trail into a route from the Edit Trail menu.



Turns on/
off trail
display
on map

Turns on/
off trail
recording

Edit Trails menu



Navigating a trail

A trail must be saved as a route before it can be navigated.

To save a trail as a route:

1. Highlight the desired trail on the Trails screen and press **ENTER**. The Edit Trail menu will appear.
2. Highlight *Create Route* and press **ENTER**. The Edit Route menu will appear.
3. Highlight *Done* and press **ENTER**.
4. For navigation instructions refer to the Navigating a route segment.

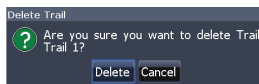
Displayed and Record

Displayed allows you to show/hide trails on the map display, preventing the screen from being cluttered with trails.

The Record command allows you to record or resume recording a desired trail.

Delete and Delete All

Delete is used to remove individual trails. Delete All removes all trails.



Orientation

Allows you to select North Up or Course Over Ground (COG) as the map orientation.



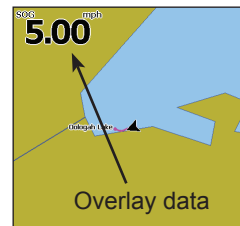
North Up



COG

Overlay Data

Allows you to select data (course over ground, etc) to be displayed on top of the Chart screen.



Overlay data setup is covered in the Pages section.

Settings

Accesses the Chart settings menu.

Settings

Settings Menu

Accesses to installation and configuration settings for your unit.

The Settings Menu is a central hub for configuration. It includes sub-menus for:

- Language...:** Selects the display language.
- Mute audio:** Toggles audio output.
- Time...:** Sets the current time and date.
- GPS status...:** Shows GPS signal strength.
- GPS source:** Selects between Internal and External GPS.
- Data port:** Selects between Tmp and Spd ports.
- Chart/Sonar split Over:** Toggles between chart and sonar display.
- Advanced mode:** Toggles advanced features.
- Restore defaults...:** Resets settings to factory defaults.
- Browse files...:** Accesses the file browser.
- About...:** Displays software information.
- Arrival radius...:** Sets the radius for arrival alerts (50ft).
- Off course dist...:** Sets the distance for off-course alerts (100ft).
- WAAS/MSAS/EGNOS:** Toggles satellite augmentation systems.
- Bearings:** Selects between Magnetic and True.
- Variation:** Sets magnetic variation (Auto 4.7°E).
- Noise rejection:** Selects Low or High.
- Surface clarity:** Selects Off or On.
- Manual mode:** Toggles manual mode.
- Fishing mode:** Selects General use or Manual.
- Reset fishing mode:** Resets fishing mode settings.
- Installation...:** Accesses installation options.
- Distance:** Selects Miles or Feet.
- Speed:** Selects MPH or KPH.
- Depth:** Selects Feet or Meters.
- Temp:** Selects Fahrenheit or Celsius.
- Bearings:** Selects Magnetic or True.
- NMEA 0183 Output Sentences:** Selects which NMEA sentences to output (e.g., GLL, GGA, RMC, DPT, CSA/V, APB, BWC, Sonar, DBT, VLW, VHW, MTW).
- Baud rate:** Sets the communication speed (4800).
- Simulate:** Toggles simulation mode.
- Options...:** Accesses additional options.

Settings menu

(Advanced mode only)

System

Adjusts unit settings like language, mute audio and advanced mode.

The System menu provides access to core unit settings:

- Time:** Shows current time (10:41 AM) and date (12/12/2011).
- Time format:** Selects 12 hour or 24 hour.
- Date format:** Selects MM/dd/yyyy or dd/mm/yyyy.
- Save/Close:** Saves changes and closes the menu.
- Languages:** Lists available languages (English, UK English, Français, Español, Deutsch, Italiano, Dansk, Svenska, Nederlands, Suomi, Polski, Norsk).
- Satellites:** Shows satellite status, fix type (3D, WAAS), HDOP (0.00), and coordinates (N 36°00.91', W 95°50.57').
- Language...:** Opens the language selection menu.
- Mute audio:** Toggles audio output.
- Time...:** Opens the time and date settings menu.
- GPS status...:** Shows current GPS status.
- GPS source:** Selects between Internal and External.
- Data port:** Selects between Tmp and Spd.
- Chart/Sonar split Over:** Toggles between chart and sonar display.
- Advanced mode:** Toggles advanced features.
- Restore defaults...:** Resets settings to factory defaults.
- Browse files...:** Accesses the file browser.
- About...:** Displays software information.
- Internal antenna:** Selects Internal or External antenna.
- Over Side:** Toggles antenna orientation.
- Restore Defaults:** A warning dialog asking if you are sure you want to restore all defaults, as waypoints, routes, or trails will be lost.
- 0183 output:** Selects between Tmp/Spd input and 0183 output.
- Enables advanced features and settings:** A note indicating that enabling advanced mode allows access to more settings.
- Displays software information:** A note indicating that the About menu displays software information.

System menu

Displays software information

Set Language

Selects the language used on menus and text boxes.

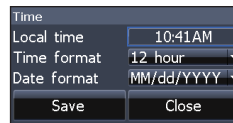


Mute Audio

Turns on/off unit audio, like key beeps, alarm sounds, etc.

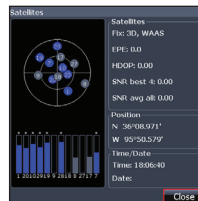
Time

Used to set local time, and time and date formats for your unit.



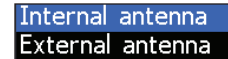
GPS Status

Monitors the location of satellites in view and the quality of the unit's satellite lock-on.



GPS Source (Elite-5 only)

Selects the antenna your unit will use for GPS. You will use the built-in GPS antenna unless you have a LGC-16W external antenna (p/n: 000-00146-001).



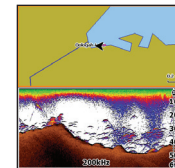
Data Port

Selects the type of device connected to the unit's Data port. The port can be configured for use as a NMEA 0183 port or a secondary speed/temp sensor.



Chart/Sonar Split

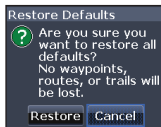
Allows you to display the Chart/Sonar combo page with with pages split vertically or horizontally. Chart/Sonar split is covered in the pages section.



Settings

Advanced Mode

Enables features and settings only available with unit in Advanced Mode.

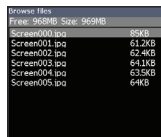


Restore Defaults

Switches the unit back to default settings.

Browse Files

Allows you to view a list of the files saved to the microSD card.



Saving Screenshots

You can save screenshots to a microSD card by inserting a microSD card into the card slot and pressing Power and then Zoom (+).



NOTE: *You cannot save screenshots to a Navionics card.*

You must view files on a computer or other microSD compatible device.

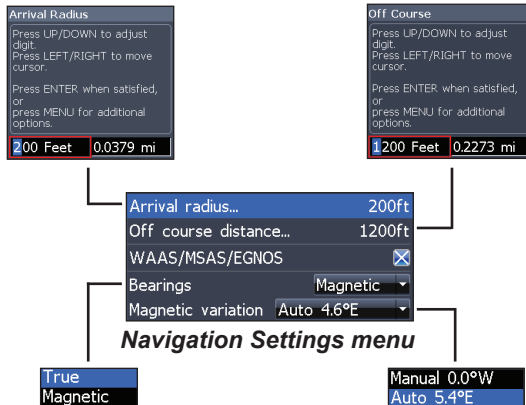
About

Displays software information about this unit. Before attempting a software update, you can check the version of software your unit is using by accessing the About screen.

Lowrance periodically updates unit software to add features and improve functionality. To see the latest available software version go to www.lowrance.com.

Navigation

Controls Arrival Radius and Off Course distance settings and is used to turn on/off WAAS/MSAS/EGNOS.



Arrival Radius

Sets the arrival radius threshold for the Arrival alarm. The arrival alarm will sound when your vessel comes within a selected distance (arrival radius) of the destination waypoint.

Off Course Distance

Sets Off Course Distance threshold for the Off Course alarm. When the selected off course distance is exceeded, the Off Course alarm will sound when the alarm is enabled.

WAAS/MSAS/EGNOS

Turns on/off the Wide Area Augmentation System (WAAS), Multi-Functional Satellite Augmentation System (MSAS) and European Geostationary Navigation Overlay Service (EGNOS).

All three systems help increase GPS accuracy for different parts of the world.

Settings

Bearings

Controls whether bearing will be calculated using True North or Magnetic North. Magnetic North should be used when navigating with a compass course or heading; otherwise use the default setting, True North.

Magnetic Variation

Controls whether magnetic variation will be calculated using Automatic or Manual settings. Magnetic variation is the angle between magnetic north and true north. The automatic setting reconciles the variation for you.



WARNING: *You should only use the Manual magnetic variation setting if you have variation information from a verified source.*

Chart

Controls map data used on the chart screen as well as display settings like grid lines, waypoints, routes and trails.

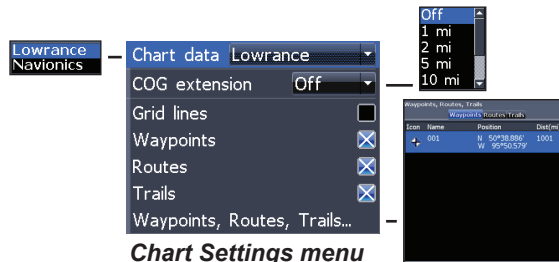


Chart Data

Selects map data that will be used on the Chart display (Lowrance or Navionics regional map). Go to Navionics.com to see a full selection of available charts.

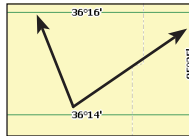
COG Extension

A line extending from the front of the current position icon that estimates the time and distance to areas in front of you.



Grid Lines

Displays base values for latitude and longitude, making it easier to get a general idea of your location on the latitude/longitude scale.



Waypoints, Routes and Trail displays

From the Chart Settings menu, you can turn on/off waypoint, route and trail display properties. Turning off display properties allows you to get a better view of the map, if the screen becomes cluttered with waypoints, routes and/or trails.

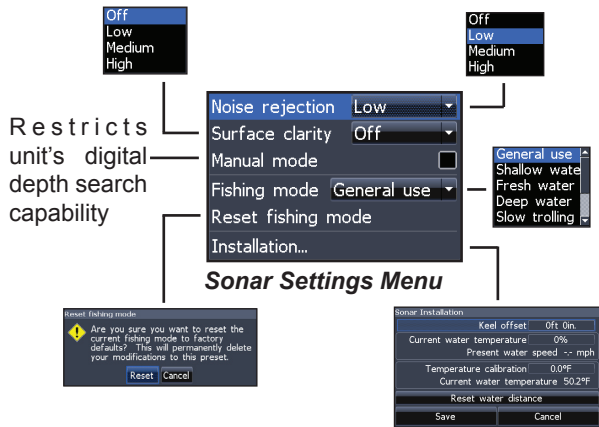
Waypoints, Routes, Trails

Accesses the Waypoints, Routes & Trails screen. Waypoints, Routes and Trails are covered in the Chart section.

Settings

Sonar

Used to make adjustments to Sonar options and display settings like Noise Rejection, Surface and Fishing Mode.

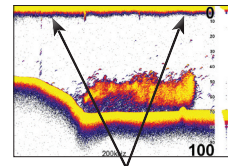


Noise Rejection

Uses advanced signal processing to monitor the effects noise (boat pumps, water conditions, engine ignition systems, etc.) has on your display, and then filters out undesired signals.

Surface Clarity (Advanced Mode only)

Surface Clarity reduces surface clutter by decreasing the sensitivity of the receiver near the surface.



Surface Clutter

Manual Mode

Restricts digital depth capability, so the unit will only send sonar signals to the selected depth range. That allows the display to continue smooth scrolling if the bottom depth is out of transducer range.

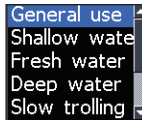


WARNING: Manual mode should only be used by advanced sonar users.

When the unit is in manual mode, you may not receive any depth readings, or you may receive incorrect depth information.

Fishing Mode

Enhances the performance of your unit by providing preset packages of sonar settings geared to specific fishing conditions. For more information about fishing modes, refer to the Basic Operation section.

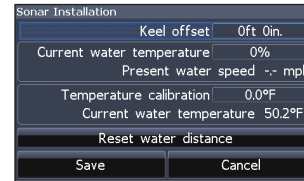


Reset Fishing Mode

Resets selected fishing mode to default settings. That is useful when you want to clear settings adjustments made while using a fishing mode.

Installation

Provides access to Keel Offset and Temp Calibration settings.

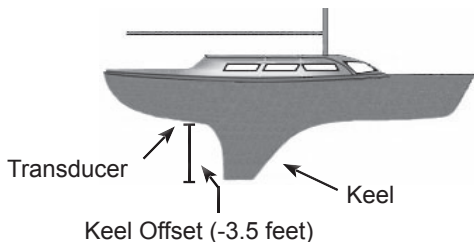


Installation menu

Keel Offset

All transducers measure water depth from the transducer to the bottom. As a result, water depth readings do not account for the distance from the transducer to the keel or from the transducer to the water surface.

Settings



Before setting keel offset, measure the distance from the transducer to the lowest part of the keel. If, for example, the keel is 3.5 feet below the transducer, it will be input as -3.5 feet.

Temperature calibration

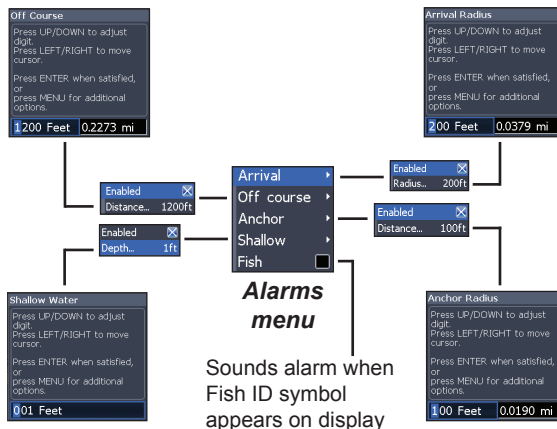
Calibrates data from the transducer temperature sensor with data from a known temperature source to ensure the accuracy of temperature information.

Reset water distance

Reset Water Distance to zero.

Alarms

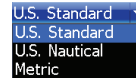
Enables alarms and selects alarm thresholds. Arrival, Off Course and Anchor alarms are only available in Advanced mode.



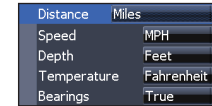
Alarms	
Arrival	sounds alarm when you are within a selected distance of your destination (Advanced Mode only)
Off Course	sounds alarm when course exceeds a selected off-course threshold (Advanced Mode only)
Anchor	sounds alarm when vessel moves a selected distance (Advanced Mode only)
Shallow	sounds alarm when vessel enters water shallower than the selected shallow threshold
Fish	sounds alarm when a fish symbol (Fish ID) appears on the sonar screen

Units

Allows you to select the unit of measure used by the unit. Unit options vary depending on whether the unit is in basic or advanced mode.



Basic Mode



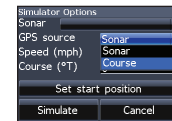
Advanced Mode

NMEA 0183 Output

Allows users to select NMEA 0183 sentences the unit will use when connected to a VHF radio or other NMEA 0183 device.

Simulator

Simulates GPS and/or sonar activity. Simulations can be customized on the Simulator options menu.



Index

A

About 32
Adjust menu 16
Advanced Mode 10
Alarms 38
Amplitude Scope 19
Anchor alarm 39
Arrival alarm 39
Arrival Radius 33
Auto Sensitivity 17

B

Bearings 34
Browse Files 32

C

Cancel navigation 26
Chart 34
Chart Data 34
Chart menu 34
Chart Menu 21
Chart Page 12

Chart/Sonar page 12
Chart/Sonar split 13
Chart/Sonar Split 31
COG Extension 35
Color 19
Colorline 17
Creating a route 23
Creating trails 27
Cursor 9
Custom Range 18

D

Data Port 31
Depth Range 17
Dialogs 8
Dropdown menus 7

E

Editing waypoints 22

F

Fish alarm 39

Fish ID 20
Fishing Mode 8
Fishing Modes
 Reset 37
Frequency 18

G

Goto cursor 9
Goto waypoint 23
GPS Source 31
GPS Status 31
Grid Lines 35

I

Ice Mode 20
Installation menu 37

K

Keel Offset 37

L

Language 31

M

Magnetic Variation 34
Man
 Overboard
 waypoint 3
Man Overboard way-
 point 3
Manual Mode 36
microSD cards 4
Mute Audio 31

N

Navigating a route 25
Navigating a trail 28
Navigation 33
Navigation menu 33
New Waypoint 21
NMEA 0183 39
Noise Rejection 36

O

Off Course alarm 39

Off Course Distance 33
On/Off features 7
Orientation 29
Overlay Data 13, 29
 Configure 13
 Customizing 14
 Show 13

P

Page menus 6
Page selection 5
Ping Speed 18

R

Reset Fishing Mode 37
Reset water distance
 38
Route display 35
Routes Screen 23

S

Saving Screenshots 32
Scrollbars 7

Sensitivity 16
Settings Menu 30
Setup wizard 5
Shallow alarm 39
Simulator 39
Software Updates 32
Sonar Installation 37
Sonar Menu 15
Sonar Options menu
 19
Sonar Page 11
Sonar settings 36
Sort waypoints 23
Split Flasher 19
Split Zoom 19
Standby mode 10
Steer Page 11
Stop Sonar 20
Surface Clarity 36
System settings 30

T

Temperature calibration 38

Text entry 8
Time 31
Trail display 35
Trails Screen 27
Turn unit on/off 3

U

Unit Controls 3
Units 39
Upper and Lower Limits 18

W

WAAS/MSAS/EGNOS
 33
Waypoint display 35
Waypoints, Routes,
 Trails 22
Working with menus 7

Specifications

Elite 5	
General	
Case Size	5.4" H (134mm) x 6.8" W (174mm); 6" H (152mm) with bracket
Display	(5" diagonal) Enhanced Solar MAX™ 480x480 color TFT LCD
Backlight	Cold cathode fluorescent lamp (10 levels)
Communications	NMEA 0183 Output
Shared devices supported	VHF and Autopilot through NMEA 0183
Power	
Transmit Power	4000W PTP; 500W RMS
Power Requirement	12V
Voltage Input	10 to 17V
Current drain	Typical: .75A
Fuse type	3-amp Automotive (not supplied)

Sonar (Elite 5 only)	
Max depth	1000ft (305m)
Transducer Frequency	83/200kHz
Max speed	70mph
Transducer	Skimmer with built in temp sensor
Transducer cable	20ft (6m)
GPS	
Mapping card slot	microSD (microSDHC high capacity cards are not compatible)
GPS Antenna	16 parallel channel (internal); optional external GPS antenna sold separately
Mapping compatibility	Fishing Hot Spots, NauticPath & Navionics (Hotmaps, Premium and Gold)
Waypoints, Routes & Trails	Up to 3000 waypoints, 100 routes and 100 retracable plot trails

Specifications

Elite 4 & Mark 4	
General	
Case Size	5.6" H (144mm) x 3.7" W (94.3mm); 6.4" H (164mm) with bracket
Display	Elite 4: (3.5" diagonal) 320x240 (256 color) TFT LCD Mark 4: (3.5" diagonal) 320x240 monochrome TFT LCD
Backlight	White LED (10 levels)
Communications	NMEA 0183 Output
Shared devices supported	VHF and Autopilot through NMEA 0183
Power	
Transmit Power	2100W PTP; 262W RMS
Power Requirement	12V
Voltage Input	10 to 17V
Current drain	at 13.5V (250mA)
Fuse type	3-amp Automotive (not supplied)

Sonar	
Max depth	1000ft (305m)
Transducer Frequency	83/200kHz
Max speed	70mph
Transducer	Skimmer with built in temp sensor
Transducer cable	20ft (6m)
GPS	
Mapping card slot	microSD (microSDHC high capacity cards are not compatible)
GPS Antenna	16 parallel channel (internal); optional external GPS antenna sold separately
Mapping compatibility	Fishing Hot Spots, NauticPath & Navionics (Hotmpas, Premium and Gold)
Waypoints, Routes & Trails	Up to 3000 waypoints, 100 routes and 100 retraceable plot trails

Navico Databases License Agreement

THIS IS A LEGAL AGREEMENT BETWEEN THE END-USER WHO FIRST PURCHASES THIS PRODUCT AS A CONSUMER ITEM FOR PERSONAL, FAMILY, OR HOUSEHOLD USE ("YOU") AND NAVICO, THE MANUFACTURER OF THIS PRODUCT ("WE", "OUR", OR "US"). USING THE PRODUCT ACCOMPANIED BY THIS LICENSE AGREEMENT CONSTITUTES ACCEPTANCE OF THESE TERMS AND CONDITIONS. IF YOU DO NOT ACCEPT ALL TERMS AND CONDITIONS, PROMPTLY RETURN THE PRODUCT WITHIN 30 DAYS OF PURCHASE. PLEASE RETURN USING THE ENCLOSED UPS SHIPPING LABEL AND INCLUDE: PROOF OF PURCHASE, NAME, ADDRESS, AND PHONE NUMBER. YOUR PURCHASE PRICE AND ANY APPLICABLE TAXES WILL BE REFUNDED. PLEASE ALLOW 4-6 WEEKS TO PROCESS YOUR REFUND.

1. This License Agreement applies to the one or more databases that your product may contain. We refer to these singly as a "Database" and together as the "Databases." Your product may thus include the "WBS Database" which contains worldwide background surface mapping data, the "SmartMap Database" which contains inland mapping data, or other Databases.
2. The Databases that your product may contain are licensed, not sold. We grant to you the nonexclusive, nonassignable right to use these Databases for supplemental navigation reference purposes, but only as long as you comply with the terms and conditions of this License Agreement. We reserve the right to terminate this license if you violate any aspect of this License Agreement. You are responsible for using official government charts and prudent navigation for safe travel.
3. The Databases housed in your product are protected by the copyright notices appearing on the product or its screen(s). You may NOT modify, adapt, translate, reverse engineer, decompile, disassemble, rent, lease, or resell any Database, and you may NOT create derivative works based upon any Database or its contents. Any unauthorized reproduction, use, or transfer of a Database may be a crime and may subject you to damages and attorney fees.
4. This License Agreement will terminate immediately without prior notice from us if you fail to comply with or violate any of the provisions of this Agreement. Upon termination, you will promptly return all products containing one or more Databases to us.
5. Prices and programs are subject to change without notice.
6. This License Agreement shall be governed by the laws of the State of Oklahoma and comprises the complete and exclusive understanding between you and us concerning the above subject matter.

Databases Limited Warranty

"We", "our", or "us" refers to Navico, the manufacturer of this product. "You" or "your" refers to the first person who purchases the product as a consumer item for personal, family, or household use. The Databases Limited Warranty applies to the one or more databases that your product may contain. We refer to each of these as a "Database" or together as the "Databases." Your product may thus include the "WBS Database" which contains worldwide background surface mapping data, the "SmartMap Database" which contains inland mapping data, or other Databases.

We warrant to you that we have accurately compiled, processed, and reproduced the portions of the source material on which the Databases are based. However, we are under no obligation to provide updates to the Databases, and the data contained in the Databases may be incomplete when compared to the source material. WE MAKE NO EXPRESS OR IMPLIED WARRANTY OF ANY KIND ABOUT THE ACCURACY OF THE SOURCE MATERIAL ITSELF, INCLUDING BUT NOT LIMITED TO IMPLIED WARRANTIES OF MERCHANTABILITY OR FITNESS FOR A PARTICULAR PURPOSE.

If there is a defect in any Database, your exclusive remedy shall be, at our option, either a refund of the price you paid for the product containing the defective Database or a replacement of such product. WE WILL NOT UNDER ANY CIRCUMSTANCES BE LIABLE TO ANYONE FOR ANY SPECIAL, CONSEQUENTIAL, INCIDENTAL, OR OTHER INDIRECT DAMAGE OF ANY KIND. Some states do not allow the exclusion or limitation of incidental or consequential damages, so the above limitations or exclusions may not apply to you.

This warranty does NOT apply in the following circumstances: (1) when the product has been serviced or repaired by anyone other than us; (2) when the product has been connected, installed, combined, altered, adjusted, or handled in a manner other than according to the instructions furnished with the product; (3) when any serial number has been effaced, altered, or removed; or (4) when any defect, problem, loss, or damage has resulted from any accident, misuse, negligence, or carelessness, or from any failure to provide reasonable and necessary maintenance in accordance with the instructions of the owner's manual for the product.

We reserve the right to make changes or improvements in our products from time to time without incurring the obligation to install such improvements or changes on equipment or items previously manufactured.

This warranty gives you specific legal rights and you may also have other rights which may vary from state to state.

Your remedies under this warranty will be available so long as you can show in a reasonable manner that the defect occurred within one (1) year from the date of your original purchase, and we must receive your warranty claim no later than 30 days after such 1-year period expires. Your claim must be substantiated by a dated sales receipt or sales slip.

How to Obtain Service... ..in the USA:

Contact the Factory Customer Service Department. Call toll-free:

800-324-1356

8 a.m. to 5 p.m. Central Standard Time, M-F

Navico may find it necessary to change or end shipping policies, regulations and special offers at any time. They reserve the right to do so without notice.

...in Canada:

Contact the Factory Customer Service Department. Call toll-free:

800-661-3983

905-629-1614 (not toll-free)

8 a.m. to 5 p.m. Eastern Standard Time, M-F

...outside Canada and the USA:

Contact the dealer in the country where you purchased your unit. To locate a dealer near you, see the instructions in paragraph number 1 below.

Accessory Ordering Information

LEI Extras is the accessory source for sonar and GPS products manufactured by Lowrance Electronics. To order Lowrance accessories, please contact:

- 1)** Your local marine dealer or consumer electronics store. To locate a Lowrance dealer, visit the web site, www.lowrance.com, and look for the Dealer Locator; or, consult your telephone directory for listings.
- 2)** U.S. customers visit our web site www.lei-extras.com.
- 3)** Canadian customers: Lowrance Canada, 919 Matheson Blvd. E. Mississauga, Ontario L4W2R7 or fax 905-629-3118. Call toll free in Canada, 800-661-3983, or dial 905 629-1614 (not toll free), 8 a.m. to 5 p.m. Eastern Standard Time, M-F.

Visit our website:

www.lowrance.com



* 9 8 8 - 1 0 1 6 1 - 0 0 1 *

© Copyright 2011
All Rights Reserved
Navico Holding AS